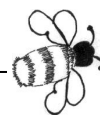
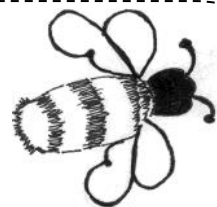


Eden and Lyne Buzz



THE EDEN AND LYNE BUZZ ANNUAL ACCOUNTS

Our thanks to Mrs Janette Fisher who has maintained our accounts on a voluntary basis throughout the first year. Shown below are the figures of income, expenditure and balances for the first year's issues of the Eden and Lyne Buzz.

DONATIONS - £650 in April was donated by a number of benefactors who wanted a Community Magazine to be resurrected. £450 in July was donated by the Cumberland Building Society Community Fund to sponsor the printing of the Aug/Sep issue and £500 in August came from the Westlinton Parish Council's grant from the Burn Beck Windfarm Fund.

SUBSCRIPTIONS - £1775 equals subscriptions paid and small amounts donated by individual subscribers. Over 300 subscriptions have actually been paid but some copies have been distributed on a complimentary basis.

ADVERTISING – Self explanatory.

EXPENDITURE – The first 2 issues were printed by local charity in Carlisle (£486 and £479); when their services were no longer available, tenders were sent out and "Print Out" provided the best quote and got the job for 6 issues at approx. £290 per edition. Extra printing was paid for in February 2018, £150 was a remuneration to the person who does most of the layout of the magazine and £23.45 was spent on plastic stands for sales of the magazine at various outlets.

The Trustees recommend that the £650 start up donations and the £500 from the Beck Burn Grant are retained within the accounts and that £800 be given to local good causes, organisations or charities nominated by the readership in accordance with the Constitution.

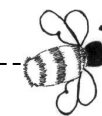
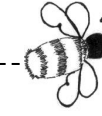
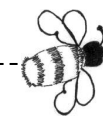
SUBSCRIBERS TO THE EDEN AND LYNE BUZZ ARE THEREFORE INVITED TO MEET IN THE ROCKCLIFFE CENTRE AT 7.30PM on TUESDAY 22nd MAY TO MAKE SUGGESTIONS AS TO HOW THE SURPLUS OF £800 SHOULD BE DISTRIBUTED.

Eden & Lyne Buzz Accounts 2017/18

Income	Donations	Subs	Adverts	Expenditure
April	£650.00	£58.60	£125.00	£ -
May	£ -	£231.00	£235.00	£486.84
June	£ -	£1,130.00	£180.00	£479.14
July	£450.00	£250.00	£55.00	£289.50
Aug	£518.00	£35.00	£ -	£23.45
Sept	£ -	£ -	£25.00	£ -
Oct	£ -	£ 5.00	£104.50	£294.50
Nov	£ -	£ -	£60.00	£ -
Dec	£22.00	£35.00	£100.00	£289.50
Jan	£10.00	£10.00	£30.00	£150.00
Feb	£ -	£ -	£ -	£348.75
Mar				£ -
Total	£1,650.00	£ ,774.60	£ 914.50	£2,361.68
Income & Expenditure Totals				£ 2,361.68
Income minus Expenditure				£1,977.42
As at 15.03.18				Bank Balance £1,977.42
All Figures have been reconciled against the bank statement.				

Eden and Lyne Buzz

APRIL AND MAY 2018



FOR THE COMMUNITIES OF ROCKCLIFFE, CARGO, HARKER, BLACKFORD, WESTLINTON AND ALL POINTS IN BETWEEN



£5 per year (6 Issues) Or £1-50



**FOCUS
ON
CARGO
AND KINGMOOR**



SEE ARTICLES ON PAGES 12 and 13

Eden and Lyne Buzz

GRAHAMS NEWSAGENTS KINGSTOWN

Newspaper and Milk Deliveries
round from Jamie Johnston
**All Dairy Products,
Daily and Sunday Newspapers
and Magazines**
delivered to your doorstep.
All enquiries to 01228-524797



LYNEFOOT KENNELS

<http://lynefootkennelsltd.co.uk>

Established in 2009 Lynefoot Kennels is a family run business. With help from a small, dedicated team, we want you to leave your dog knowing that they will receive our personal care and attention at all times.

"Lynefoot is a friendly, family-run kennel with high standards of cleanliness and care. Extremely roomy indoor kennels with an outside bit. An exercise pen which David and his family make sure all dogs get use of throughout the day. Twice daily walks in lovely fields. It is reassuring to know that they make regular checks on vacs and health updates"

Address: Lynefoot Kennels,
Lynefoot Farm, Carlisle, CA6 6AJ
Telephone: 01228 674 376
Email: fiona@lynefootfarm.plus.com

DISCLAIMER

The Eden and Lyne Buzz is produced for residents in the Rockcliffe, Kingmoor and Westlinton Parish Council areas. The magazine seeks to serve the local community by including local community events, advertisements and items of local interest. Inclusion of such material in the magazine does not imply that the Trustees endorse everything that is mentioned, nor are they responsible for any inaccuracies in the information supplied

IN THIS EDITION

Page 2	What's On?, Disclaimer
Page 3	List of Advertisers, Constitution. Working together to prevent dog theft,
Page 4	Local Events
Page 5	Editorial
Page 7	CofE, RC and Methodist Church Services
Page 8	Press To Test, Messy Church
Page 9	Beck Burn Windfarm, Blackford News and WI
Page 10	Children's Page
Page 11	Rockcliffe Centre Bookings etc
Page 12	Focus on Kingmoor
Page 13	CARGO – What's in a name?
Page 14	Rockcliffe and Westlinton Parish Councils
Page 16	Crindledyke Community. Rockcliffe School. Cyber Awareness
Page 17	Sudoku
Page 18	From the Vicarage
Page 19	Rockcliffe Cricket Club. Family of James Watt
Page 20	Village Wheels Timetable
Page 22	Rockcliffe Parish Council Report.
Page 24	The Eden and Lyne Buzz annual accounts

WHAT'S ON? - FUTURE EVENTS

1st Apr	Kirklington Hall reopening — See Page 23
15 Apr	Daffodil Sunday at Castletown
11 May	That's Entertainment Show—See page 9
13 May	Craft Fair Rockcliffe
19 May	ROYAL WEDDING—Street Parties?
16 Jun	Cumberland Show
28 May	Car Boot Sale at St Augustines
24 Jun	Summer Fete Rockcliffe
15 and 29 Aug	—Summer Playschool Rockcliffe
7 Oct	St Mary's Harvest Sale and Supper
25 Nov	Christmas Fair, Rockcliffe Centre

TO ADD TO THIS LIST SEND DETAILS TO
edenandlynebuzz@gmail.com

NEXT COPY DATE

The Eden and Lyne Buzz is produced 6 times a year
at the start of the even months
Feb, Apr, Jun, Aug, Oct and Dec.
Material can be sent at anytime to
edenandlynebuzz@gmail.com
The final date for material for the
June/July Edition is
FRIDAY 25th May 2018

Eden and Lyne Buzz

UsedCars4Less.co.uk

We buy and sell handpicked used cars with a 6 months warranty on all vehicles.
Finance packages are available and you can also part exchange your old car.

Visit our Showroom Page at www.usedcars4less.co.uk

Or call in at

UsedCars4Less, Hillside Garage, Cargo, Carlisle, CA6 4BB

Or call us on 01228 317 371 or 07543 333 881

Chris.smalley@usedcars4less.co.uk

LIKE US ON FACEBOOK

Mortgages in retirement

55 to 105 and beyond...
there's no upper age limit on our mortgages

0800 032 3030 cumberland.co.uk



Your mortgage is secured on your home. Think carefully before securing other debts against your home. Your home may be repossessed if you do not keep up repayments on your mortgage.

Eden and Lyne Buzz

Rockcliffe Parish Council Meeting 15th

March 2018

Public Participation

Helen Renyard from Cumbria County Council Local Lead Flood Authority (LLFA) attended to answer questions regarding their stand on various flooding issues within the Parish. She was also asked to look at the surface water drainage from Lonning Foot to the river Eden.

Flooding

Cllr Harper gave an update of the meeting with MP Rory Stewart. He had sent a list of people and contractors that can advise on various matters. Mr Andrew McHugh from RAB consultants was very helpful and Cllr Robert Park will discuss options with him and with those affected in the January flooding.

Highways

Various highway matters were discussed, including the many potholes on our roads.

As the sign posts at the Gretna turn off at Floriston and the one on the fly-over have been obliterated again, it was suggested that the signs should be moved to before the junction to make drivers aware of the T-junction before they reached it.

The repairs to School Lane were appreciated.

Clerks Report

Various updates were reported on including the back payment from Transparency Fund resulting in £609 being paid to the Parish Council. Data Protection and policy updates and Audits were discussed.

Computer updates and storage along with technical back up was approved. The summer Play scheme has been booked for **Wednesdays 15th and 29th August**. Funding will be applied for.

Correspondence

The Job Centre asked for a Resource link to be added to our Website. PC Clerk to contact Community Pay Back. The Electoral Review does not affect the Parish boundaries.

A request by the residents of Stanwix to oppose the proposed Kingmoor Park Incinerator was studied. Our main concern is the amount of waste coming from outside the area, increased lorry movements and fumes. We will be commenting on the plans at the relevant time.

Councillor matters

A parishioner wrote asking for a renewal of the bus service. Both Cllr Val Tarbitt and Cllr Harper have tried to get bus services diverted through Rockcliffe but the bus companies refuse to do so. Since the bus service subsidies were removed the operators who are now 'for profit' business refuse to budge. The clerk is to write to Stagecoach who still hold the licence for that route. There is a community bus on Tuesdays and Fridays at 10.30 am. Details on the noticeboard or Rockcliffe Centre and Eden and Lyne Buzz. Concern was raised regarding the rubbish on the roadsides. Various clean-ups arranged but the village will hold a litter pick on **April 21st please meet at the Rockcliffe Centre at 10.30 am. All relevant equipment will be provided.**

Date of next Meeting

21st May at 7.00 pm in the Rockcliffe Centre – AGM open to the public followed by Rockcliffe Parish Council Meeting at 7.30pm.

A full record of the meeting will be displayed on our notice boards or our website www.rockcliffeparishcouncil.co.uk

John Harper

Chair Rockcliffe PC

SUDUKO SOLUTION

See Page 4

1	7	9	4	8	3	2	6	5
2	6	8	1	7	5	3	9	4
5	4	3	2	6	9	8	7	1
7	2	1	3	9	4	6	5	8
4	3	6	9	5	8	1	2	7
8	9	5	7	1	2	6	4	3
9	1	4	6	3	7	5	8	2
3	5	7	8	2	9	4	1	6
6	8	2	5	4	1	7	3	9

PLEASE SUPPORT OUR ADVERTISERS
and mention the
Eden and Lyne Buzz

Eden and Lyne Buzz

LIST OF ADVERTISED SERVICES

Accountants—Page 15 and 20
Boiler Servicing, Repairs and Installation—Page 15
Building Society/Bank—Page 23
Catering—Page 17 Chimney Sweep—Page 8
Chiropodist—Page 6
Coffee Mornings—Page 2
Computer Supplies and repairs etc—Page 6
Domestic Appliances Repairs and Sales—Page 15
Electrical Repairs etc—Page 17
Firewood/Logs—Page 20
Garden Maintenance—Page 6
Hospice—Page 8
Funeral Directors—Page 15 and 17
Garden Centre—Page 21
Hair Dresser (Mobile) Page 20
Indoor Bowls—Page 21
Job Centre—Page 21
Joiner and Handyman Page 8
Kennels—Page 2
Kirklington Hall - Page 11
Legal Advice—Page 9
Milk and Newspaper Deliveries—Page 2
Netherby Hall—Page 21
Plumber—Page 21 Printing—Page 18
Public House—Page 24
Rockcliffe Centre—Page 3
Tax/Wills advice—Page 9
Tree Feller—Page 17 Tuesday Club—Page 4
Used Car Dealer—Page 23
Vehicle Repairs—Page 20
Village Wheels—Page 20
Window Cleaning etc—Page 6

AUCTION IN AID OF EDEN VALLEY HOSPICE.

COLLECTION IN 6 PRESENTATION ALBUMS OF ALMOST EVERY GB COMMEMORTIVE POST OFFICE FIRST DAY COVER FROM 1971 TO 1998. MINIMUM BID £25 BY 27TH APRIL WITH YOUR BID AND CONTACT DETAILS TO:
tony@parrini.co.uk or by post to him at Hamethwaite, Rockcliffe, Carlisle CA6 4AB.

EDEN AND LYNE BUZZ CONSTITUTION

The Eden and Lyne Buzz is a community magazine run by unpaid volunteers on a not for profit basis.

Eden and Lyne Buzz is run by a group of volunteer Trustees who, for the time being are Mr A L Parrini (Chairman and Editor), Mrs Janette Fisher (Treasurer), Mrs Judith Twentyman (Secretary) and Mrs Ann Hay (Advertising Coordinator).

The Bank Account is with The Cumberland Building Society

All payments out of the account will be by Cheque signed by the Treasurer and 2 other Trustees.

Legitimate expenses are available if requested by volunteers and Trustees if approved unanimously by the Trustees.

Eden and Lyne Buzz will be published 6 times per year.

Subscriptions and Advertising Rates will be set by the Trustees in April each year based on the financial results of the previous year's trading.

The Trustees will invite all subscribers to attend an AGM in May each year to present the accounts and agree the distribution of any surplus funds held.

Trustees Mrs Ann Hay, Mrs Judith Twentyman, Mr Tony Parrini and Mrs Janette Fisher EMAIL ADDRESS: edenandlynebuzz@gmail.com

URGENTLY WANTED

The Rockcliffe Centre is in urgent need of someone to do the ordering of bar stock and maintain bar stocks. This is an important though not an onerous task, as the use of the bar facilities has increased recently, since the closure of the Crown and Thistle.

If you would like to help on a voluntary basis, please contact Nicola Johnston on 01228 672116

Working together to prevent dog theft

For many of us our pet dogs are another member of the family and if they're stolen the impact can be devastating. The national charity Dogs Trust have a new campaign to help prevent beloved pets being stolen. With a staggering 1,800 dogs reported stolen in 2016, Dogs Trust is urging owners to be vigilant through the launch of their new campaign Family Pawtraits. The Dogs Trust advises: "With dogs playing such a huge part in our lives, it is important for us to offer them the same care and protection given to all family members." "Whether two legs or four, we all want to be kept safe. By following three simple steps, the risk of theft is reduced and have a better chance of being reunited with your dog."

- Safe: secure your property and garden.
- Spottable: keep them in sight and trained to return.
- Searchable: know what steps to take should they go missing.

The Dogs Trust spokesman said "We are concerned about the rise of dog theft and that's why we wanted to do our bit to help promote the best advice on keeping them safe." For more information see www.dogstrust.org.uk/dogtheft

Eden and Lyne Buzz



Coffee Mornings
ROCKCLIFFE CENTRE

EVERY THURSDAY

at 10.30am.

All Welcome

CHILDEN'S SUMMER PLAY SCHEME

Please note that it is planned to fund the Children's Summer Play Scheme at The Rockcliffe Centre on 15th and 29th August.

Places will need to be booked.

WATCH THIS SPACE FOR MORE DETAILS



ROCKCLIFFE CENTRE AGM

Thank you to all those who came and supported the

Rockcliffe Centre AGM on

8th March at 7.30pm

The Committee hopes that the community will make good use of the Centre and come and support our future events.

DAFFODIL SUNDAY

Sunday 15th April

Castletown House

2pm to 4pm

£3 incl Cup of Tea



LITTER PICK

Saturday 21st April

Meet at Rockcliffe

Centre at 10.30am

Pickers and Bags

provided. Bring gloves. Everyone

welcome including accompanied Children



ROCKCLIFFE TUESDAY CLUB



Retired and Want to meet new friends?

Then come and join the Rockcliffe Tuesday Club at the Rockcliffe Centre.

Membership Fee £15 per quarter.

PROGRAMME

3rd April—Jules Wooding Cumbria Military Museum

17th April—Bill McClintock—Out and About

1st May—Lunch at the Metal Bridge Leave at 12.15

15th May—Ukes Akimbo at 1.30 **OPEN TO ALL £3**

29th May—to be arranged

FURTHER INFORMATION FROM

ANN HAY 674363 OR WINNIE BRAND 674470



INDOOR BOWLS CLUB

The Indoor Bowls Club has new members and a few of the previous members—so the Indoor Bowls Club survives but needs more new faces. We meet every Monday at 1.30pm in the Rockcliffe Centre.

If you want to give it a try, bring Carpet Slippers if you haven't got proper bowling shoes.

All enquiries to Ann Hay on 07890 572883

Eden and Lyne Buzz

Carlisle Job Centre Plus

www.jobcentrenearne.com

Here you can find your local job centre offices in and around Carlisle.

Your local job centre can administer claims

Jobseeker's Allowance,

Incapacity Benefit, Employment and Support

Allowance and Income Support.

Carlisle Jobcentre Plus

Broadacre House

16-20 Lowther Street

Carlisle, CA3 8DF

Telephone: 0845 604 3719

**PLEASE SUPPORT
OUR ADVERTISERS AND WHEN YOU DO
PLEASE MENTION
"Eden and Lyne Buzz"**

Aero Nurseries

Garden & Aquatic Centre



Harker Rd Ends, Carlisle, Cumbria, CA6 4HQ
01228-674 612

Between ASDA and Rockcliffe

Aero Nurseries is a traditional garden nursery with an aquatic department. Come for a visit and find in stock,

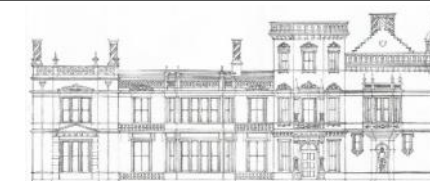
A wide selection of basket, bedding and vegetable plants including over 20 varieties of tomato plants at £1 each. We are stockists of Kings seeds and Humax and Bord Na Mona Multipurpose composts.

We have a good range of plastic pots and stone wear, artificial flowers and garden sundries, Alpines, and Herbaceous shrubs.

Our aquatic department has everything for your pond, including pumps, filters, pond liners and pre-formed pools, Pond fish and food and aquatic plants.

We are open Mon-Sat 9am-5pm
Sun 10am-4pm.

aeronurseries@outlook.com



NETHERBY HALL

AFTERNOON TEA

Each last Wednesday monthly
Enjoy Afternoon Tea in the grand
Surroundings of the Oak Hall

£20 per head – Booking essential

GROUP TOURS

House and Gardens

Refreshments available

For more details and bookings ring

01228-792732

Netherby Hall Limited, Longtown, CA6 5PR

E-mail: info@netherbyhall.co.uk



Carlisle - Plumbers

Landline 01228-494022

Mobile 07570-040048

Find us on

Whether a simple tap repair or a complex bathroom remodelling, at Carlisle-Plumbers, we pride ourselves on attention to detail and customer satisfaction. Carlisle- Plumbers is committed to serving our customers with the highest quality service and professional repairs. All of the products we utilize are of the highest quality, craftsmanship and design. With Carlisle-Plumbers, you can rest assured that your plumbing and heating needs are in good hands. Carlisle -Plumbers services Carlisle and the surrounding areas.

NO JOB TOO SMALL

Carlisle-Plumbers

37 Parkland Avenue, Carlisle CA1 3GN

01228-494022 or 07570-040048

Email: info@carlisle-plumbers.com



Checkatrade.com



Eden and Lyne Buzz

LITTLE Accounting Solutions Limited

Chartered Accountant and Chartered Tax Adviser



Expert Chartered Accountant offering a full range of accountancy, tax advice and business services. If you need an ACCOUNTANT you can really talk to.

For Professional plain speaking advice in a straightforward manner –

CONTACT TRACY LITTLE

Year End and Management Accounts
Taxation and Planning. VAT / Payroll

Budgeting / Forecasting

Business Strategy / Development

For a FREE, no obligation discussion, contact
Tracy on 01228– 812408 Mob: 07979 550860

Or admin@littleaccountingsolutions.co.uk

WEBSITE: www.littleaccountingsolutions.co.uk

Carlisle Firewood

Barn Dried Logs and Kindling
We supply and Deliver Hard
and Soft Wood

2 Free Nets of Kindling with Your
First Trailer Load of Logs

Guaranteed “Ready To Burn”

Call Steven on 07802775792



SMITHFIELD GARAGE

Kirklington • Carlisle

Car & Van Servicing & Repairs
M.O.T.'s on Cars, Large Vans & Motorcycles
Extensive Body Shop Facilities

Tel: 01228-675467

Fax: 01228-675158

DIANE CLAPPERTON

Mobile Hairdresser
Ladies /Gentlemen



Tel: 01228 380463

Mob: 07526 465577

26 Woodlands Close Stanwix Carlisle



Depart:

Tuesday and Friday		Single fare to Carlisle
Rockcliffe School	10:30	£1.25
Cargo Bus Shelter	10:36	£1.00
Arrival: Carlisle*	10:50	
Return: Carlisle*	13:30	

*Drop off and pick up point to be agreed by passenger demand on the day

What is it?

A new minibus scheme for residents of **Rockcliffe and Cargo** providing Tuesday and Friday transport **to and from Carlisle.**

What should you do...

- Phone **01228 221055** to join.
- Wait for your Smartcard.
- Then phone **01228 226430** by 12 noon the day before you wish to travel to book your seat.

Then off you go!

As village wheels is not a registered bus service, passengers are unable to use their concessionary NoWcards.

Eden and Lyne Buzz

Editorial

Those who read and retain information contained in the Eden and Lyne Buzz will recall that in the last edition, we copied a letter written to Mr Rory Stewart, MP for Penrith and the Borders, seeking his involvement in bring to the attention of a Government Minister the demise of rural life in our villages where there are no shops, no pubs, no bus service and little to support rural life. Predictably there has been no reply.

But one reader in Rockcliffe pointed out that the village has superb facilities for a community hub in the shape of the Rockcliffe Centre which is very underutilized. Not far away, the villagers in Cargo are trying to create a Community hub at the old Four Oaks Pub and hopefully they will succeed.

It seems to me as editor and with no other role in village life (I feel I've done my bit), that we are on our own — nobody is going to help us unless we help ourselves.

We need VOLUNTEERS fro within our village communities if we stand any chance of preserving the rural life that many of us enjoy and for which we gave up the urban rat race to live a more peaceful existence.

This column has centred on “Community” in most of the previous 6 issues and this remains an important element of service which this magazine tries to promote.

Our communities in Cargo, Harker, Rockcliffe, Blackford, Westlinton, Crindledyke, Edenside and Kingmoor all have the opportunity to promote a community spirit in the next few months, if only to organise street parties or other community events to mark the forthcoming Royal Wedding on 19th May!! But we could do more.

Community spirit and enjoyment within the community need an element of involvement by volunteers, prepared to give up a proportion of their time to helping other members of the community. This is achieved in many ways locally, such as membership of local parish councils, helping to run local events and youth groups, even putting this magazine together. Volunteering your time and energy helps strengthen the community, but it also has important emotional and physical benefits. Recent studies indicate that there are more and more benefits linked with volunteering, specifically when volunteering after retirement. Amongst the findings it has been found that when people who have been volunteers reach their 60's they are more likely to have lower disability and higher levels of well-being compared to those who did not volunteer. However, there are benefits for ALL age groups:

1. Helps bridge generation gap.

By interacting within different age groups, the younger generations can teach their seniors new ways of looking at

life, whilst the senior generation are able to share important life lessons with the younger generation. By building a connection with each other both generations are able to offer the respect and affirmation that humans crave.

2. Volunteering time makes you feel like you have more time.

Giving others your time can make your time feel more affluent. People who give their time feel more capable, confident and useful. Since they were able to accomplish one thing, they feel they will easily accomplish tasks in the future. So, even though realistically they have less time, they feel as though they have more time. Similarly, those who donate their money feel like they are wealthier.

3. It's good for mental health.

Volunteering keeps the brain active, which contributes to a person's cognitive health. A study recently reported that participating in activities that are meaningful and productive may lower the risk of dementia and other health problems as we grow older.

4. Helps prevent isolation and depression.

While getting out of the house is important at any age, research found that volunteering can have positive effects on a person's psychological health. Researcher has found that individuals who engaged in volunteering activities experience a shorter course of depression than those who did not volunteer. Volunteering provides a sense of purpose and accomplishment.

5. It promotes physical activity.

Physical activity remains an important role in positive health outcomes later in life. Whether that activity is helping with a local sports team or walking around your neighbourhood while volunteering as a companion, maintaining a healthy level of fitness helps fend off diseases as we age.

There are so many opportunities to serve the community tucked away in this issue – help with a litter pick, helping with running the bar at the Rockcliffe Centre, joining Heathlands Community Gardens to name but three examples—or perhaps you could do something about Community Hubs in all our villages.

NEW ADVERTISERS

If you can recommend a local business or tradesman, please advise us at edenandlynebuzz@gmail.com
Very Reasonable rates starting at £25 for a small advertisement in 6 Editions.

Eden and Lyne Buzz

BIRDIES GARDENS

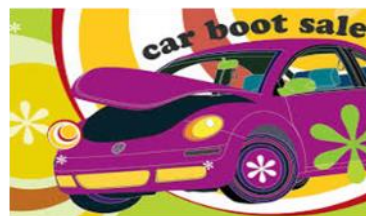
Lowry Hill

Call Andy for free
friendly estimates.

Grass Mowing, Hedge Cutting
Pressure washing,
General Garden Tidy

Mobile: 07794-509530

Tel: 01228-318809



CAR BOOT SALE

May Bank Holiday - Monday 28th May

St Augustine's Church Grounds

Car Boots from 7am – £5 or £8 with trailer.

Gates open at 8am

FOR FURTHER DETAILS

CONTACT MICHAEL ON 07796-102996

The Bar's Open

On a trial basis, the bar in the
Rockcliffe Centre will be open to local
residents to socialise on Friday
evenings from 8pm to midnight and
Sunday from 8.30 to 11.30pm.

USE IT OR LOSE IT

**PLEASE SUPPORT
OUR ADVERTISERS AND
MENTION**

**"Eden and Lyne Buzz"
when you do.**

gemsoft
COMPUTERS

COMPUTER SALES, UPGRADES,
INSTALLATION, NETWORKING,
FAULT FINDING AND REPAIRS

Count on us to deliver a first class
local service at one of the lowest prices.

CONTACT ANDREW MEGGS ON

Tel: 01228 547444 or 07785 743574

Email: mail@gemsoftcomputers.co.uk

Foot Action Saves Time

Douglas Morrison

Chiropodist Podiatrist

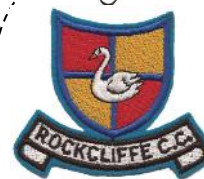
D.Pod M. M.Ch.S. HCPC Registered

douglas.morrison@footactionsavetime.co.uk

Telephone: 07933 493281

www.footactionsavetime.co.uk

Eden and Lyne Buzz



Rockcliffe Cricket Club

The 2018 season is just over a month away.
Before then we need things to warm up and
secondly, we need a bit of a tidy up down at
the ground. Whilst not the devastation of
Storm Desmond, Eleanor did leave a lot of
debris and flood water did get into the garage and pavilion
causing damage. A big thank you to the English Cricket board and
Cumbria Cricket for their support and help.

2017 season was a bit of a wash out with over half of our games
being lost to weather. When we did play we acquitted ourselves
well and all teams remained in their respective leagues.

The overwhelming
success of 2017
was the
development of
junior cricket at
Rockcliffe. We
joined the ECB's
Junior Allstars
programme and
signed up over 30 children (5-9 year old) who attended 10
coaching sessions during the summer. Despite some wet and
windy Friday evenings the kids enjoyed themselves and I am sure
we have some future stars among them.

The Allstars programme wrapped up with a presentation of
awards and a visit to the England v South Africa test match at Old
Trafford. Eight of the juniors were invited to Old Trafford where
they watched the game, took part in a coaching session on the
pitch and Rockcliffe were picked to hold the flags in the guard of
honour for the players. A great day out for all!! Well done to
William Wharton, the Allstars Activator, who put all this in place.

The sessions for the coming summer start in May on Friday nights
(6pm – 7pm). If you have children interested please ring William
(07748100085) or speak to someone at your school.

Likewise we welcome new players to our Senior/Youth teams.
Rockcliffe have a weekend team and two Midweek teams. The
second of the Midweek teams consists of players aged 14 year old
onwards. Please contact John, Club captain, if you fancy a game –
07912946549.



Even if you don't
play cricket
please come
down to the
ground
(Saturday/
Wednesday
nights) to watch.
There will even
be a cup of tea
available.
Bring on a warm
and sunny
Summer!!

THE FAMILY OF JAMES WATT

In the previous issue, we included a piece about The Old
Hall, extracted from a booklet written by James Watt and
asked for information about him. James W Watt was born
at Knowefield in 1875, son of Sir James Watt, a well
known arborialist, forester, nurseryman and seed
merchant. Sir James Watt was born in Lothian in March
1842 and died in Carlisle in 1935 aged 93.

There had been an established seed merchants in Carlisle
since 1790 run by the Hutton family. It was sold to Little
and Ballantyne in 1840, who also had nursery sites at
Botcherby and an establishment on the Victoria Viaduct.
Sir James Watt later took over the business.

The Knowefield Nurseries once covered 27.65 hectares
(68.3 acres), and stretched from the point where Knowe
Road meets North View in the south, and extended in a
large inverted triangle northwards to Landsdowne Close.
Knowefield Wood is all that remains of Little and
Ballantyne's Knowefield Nurseries. Although a small wood
today, Knowefield is a special woodland. Seeds from the
past, probably planted by Sir James Watt have grown into
a wood full of variety, some are named and their tags still
visible. Amongst the oak and the birch, you can find an
Austrian Pine and the Cedar of Lebanon, even some
California Redwoods, the world's tallest tree. Amongst
the leaf litter, you can still find the brick foundations of
what were once the glasshouses.

The Little and Ballantyne premises in the picture below
must have been a landmark as one left Carlisle on the Wa-
verley line. In a poem written in 1959 by Denis R Muir ti-
tled CITADEL STATION *The "Gateway to the North"* is a
verse as follows:

"A headboard that he knows the best,
The N.B.s "WAVERLEY EXPRESS"
For a moment he is lost in time,
each name and number stored to mind.
And here it comes - heart skips a beat,
Its smoke-box hazy with the heat
While slipping by the well-known sign -
"Seed Merchants - Little and Ballantyne""



Eden and Lyne Buzz

**The Vicarage, Rockcliffe,
Carlisle, CA6 4AA**

REFLECTION ON FACING DEATH

Bishop John Pritchard writes, 'Facing death is the last great challenge for every person who have ever lived. The inevitability of death, approaching as a dark wind blowing from the future, is an awesome anticipation for everyone. It has been said that 'Death never lets you down, remains on call seven days a week, and is happy to work three consecutive eight-hour shifts. You would buy shares in death if they were available; you would bet on it.' Such a certainty is never less that a serious challenge.'

When and how we shall die can be questions that absorb quite a bit of our time and mental energy. And if we have a poor health prognosis it will tend to do this in increasing measure depending on the diagnosis. But as Christians we can have hope, faith and confidence in a future life beyond the confines of this one brief flicker of human time. Sadly, however, that possibility is denied by some and doubted by many.

The apostle Paul fought hard to express what is inevitably mysterious when he wrote of the human body being 'sown a physical body' and 'raised a spiritual body.' 1 Corinthians 15 vs 44. Just as a seed in the field, 'what you sow does not come back to life unless it first dies.' Vs. 36.

As Christians we base our confidence on the unique and unrepeatable event of the resurrection of Jesus, which completely reversed the tragic narrative of crucifixion and replaced it with a narrative of irrepressible life and joy.

What is your understanding of resurrection? How important is life after death to you?! Paul writes, 'if

Christ has not been raised, our preaching is useless and so is your faith. 1 Corinthisians 15 vs 14. Jesus says to us, 'For God so loved the world that he gave his one and only Son, that whoever believes in him shall not perish but have eternal life.'

John 3 vs 16. And that promise is there for each one of us if we simply believe. The choice is ours.

HAPPY EASTER!

Jan, Priest-in-Charge.

From our Parish Registers

Baptism

Alice Isobel Murphy
(28th January) at Rockcliffe

Mima Daisy Mounsey-Heysham
(4th February) at Rockcliffe

BLACKFORD PCC

EXTERNAL AUTOMATED DEFIBRILLATOR

The Blackford PCC has been successful in applying for an External Automated Defibrillator (AED) from Westlinton Parish Council's Wind Farm Fund. This will be located in a suitably accessible position at Blackford School.

Although an AED gives clear instructions on how to use it, we are hoping to arrange two sessions given by First Aid Trainers to raise awareness and promote its use should the need arise. If you would like to attend one of these sessions then please let someone from Blackford School, the PCC or the Parish Council know and you will be notified when we have the dates.

THIS MAGAZINE WAS PRINTED BY

PRINT OUT

Incorporating **PENRITH OFFICE SUPPLIES**
with **IRVINGS the printers**

~ Carlisle's Print & Copy Specialists ~

Draw Tickets, Bingo Books, Spot the Balls, Letterheads, Business Cards, Orders of Service

Units 5 & 6, Denton Holme Trade Centre, Carlisle CA2 5DF ~ Tel: (01228) 599979 Fax: (01228) 590150

printoutcarlisle@aol.com

~ www.printoutgroup.com

Eden and Lyne Buzz

CHURCH SERVICE TIMES

<u>Date</u>	<u>Rockcliffe</u>	<u>Blackford</u>
Easter Sunday 1st April		
	9.30 am. Parish Communion	11.00a.m.Parish Communion
Wednesday 4th April		
	7.00 p.m. St. Mary the Virgin Church Annual General Meeting in Rockcliffe Centre	
Second Sunday of Easter 8th April		
	9.30 am. Morning Prayer	11.00 am Parish Family Service
Tuesday 10th April		
	Blackford Church Annual General meeting in school	
Third Sunday of Easter 15th April		
	9.30 am Morning Prayer	11.00 am Parish Communion with Revd. Elizabeth Gough
	2.00 p.m. Daffodil Sunday Cream Teas at Castledown (All are welcome!)	
Fourth Sunday of Easter 22nd April		
	11.00 am Service of Holy Baptism	10.00 am Morning Prayer
Fifth Sunday of Easter 29th April		
	10.30 am United Holy Communion at St. John the Baptist for both parishes	
Sixth Sunday of Easter 6th May		
	9.30 am Parish Communion	11.00 am. Parish Communion
*****CRAFT FAIR IN ROCKCLIFFE CENTRE TODAY!!!!*****		
Pentecost Sunday 20th May		
	9.30 am Parish Communion	11.00 am Service of Holy Baptism
	6.30 p.m. Service of Confirmation at Blackford Church. Bishop John Richardson	
Trinity Sunday (27th May)		
	11.00 am Family Service	10.00 am Morning Prayer
Trinity 1 3rd June		
	10.30 am United Service in Rockcliffe Centre with Archdeacon Lee Townend followed by a light lunch. All are welcome!!	



**PARISH OF ST AUGUSTINE OF
HIPPO
EASTER TRIDUUM**

**Thursday 29th March—Mass of the
Last Supper at 7pm.**

Good Friday (30th) - Service starts at 3pm

Saturday 31st— Easter Vigil starts at 8pm

Easter Sunday— Family Mass at 10.30am

MASS TIMES

Weekends: Saturday - Vigil Mass at 6.30pm

Sunday – 10.30am

Holydays of Obligation

Vigil Mass at 7.30pm and at 9am on the Feast Day

Weekdays:

9am – Monday, Thursday and Friday. 7.30pm – Wednesday

10am – Saturday Benediction – First Sunday of the Month in Ordinary Time.

Parish Priest – Father Geoffrey Steel

01228-526765

10 Waverley Road, Carlisle CA3 9JU

Your Local Methodist Church



Messy Church is regularly held at Newtown Methodist Church (3rd Sunday of the month). Our biggest so far will be on **Pentecost Sunday, 20th May**, when

we will celebrate a Messy Confirmation! There are always lots of hands-on activities, stories, music and food. Just give it a go! More mess is made at Wigton Road, Longtown, Brampton and Dalston; please get in touch for dates. More traditional services are, of course, also available..

Also see Walks to Ponder on Page 8
Contact Deacon Melanie Beaven on

Eden and Lyne Buzz

PRESS TO TEST. MONTHLY



A campaign has been launched to remind people that having working smoke alarms can save their life in the event of a fire in the home and will encourage people to test their smoke alarms now and then regularly on a monthly basis.

As part of the national advertising campaign, **Cumbria Fire & Rescue Service** is encouraging people in Cumbria to test the smoke alarms in their home (and those vulnerable friends/relatives), and if not yet done, purchase and install smoke alarms at every level of the home.

Smoke alarms can give you the few extra seconds they need to escape in a fire. While the majority of homes across the country now have an alarm fitted, most people are not aware that the average alarm has a lifespan of just ten years and then needs replacing.

A single smoke alarm may simply not be enough. The recommendation is at least one at every level, but to ensure you can hear them throughout your home, particularly when asleep. Last year, in nearly half of all fires in the home where the smoke alarm did not give a warning the reason was that the alarm was not close enough to detect the fire. Missing or flat batteries were another major cause.



To keep your alarms in working order:

- Make sure there is at least one smoke alarm on every level of your home;
- Test your smoke alarms by pushing the button every month;
- Check that your smoke alarms are less than 10 years old;
- Fit smoke alarms on landings and hallways and near or in bedrooms. Also consider in rooms which have electrical appliances – e.g. a heater or charger – or other fire risks;
- Don't put alarms in or near kitchens and bathrooms where smoke or steam can set them off by accident.
- Replace your smoke alarms every ten years
- Take a moment to check on your loved ones who may need help to test their smoke alarms to ensure they're fully protected. *"Press to test, monthly is best"*

PRESS TO TEST. MONTHLY IS BEST

LIAM MOSCROP
QUALIFIED JOINER AND HANDYMAN. ALL ASPECTS OF WORK UNDERTAKEN, HOME IMPROVEMENTS, ALTERATIONS AND REPAIRS.
BENJALIA, CARGO
CARLISLE CA6 4BE
Phone: 07711125440
E-mail: Liammoscrop1978@gmail.com



LIAM MOSCROP

SCOOP THAT POOP



We are planning a few 'Walks to Ponder' on **Saturday, 16th June**. There will be short walks for prams, longer walks with geocaching (at least that's the plan!) and a long walk for those with good fitness and sturdy shoes. Each walk will give you the opportunity to enjoy the surroundings, have some time to ponder and enjoy different activities. All walks will finish at **Solway Chapel in Port Carlisle** (These are not guided walks and you will be responsible for your own safety).

Contact: Deacon Mel Beaven, 01228 672 427

Eden and Lyne Buzz

S H ELECTRICAL Electrical Contractors

- Domestic & commercial electrical installations
- Electrical testing & rectification work
- Smoke, heat & carbon detector installations
- Security lighting & alarm systems
- Electric shower installations
- Fan and ventilation system installations
- Landlord maintenance services
- TV & aerial installations
- Solar PV

**No job too large or small
Free quotations on request**



**24 HOUR CALL OUT
07771 928090**

Unit 10, Long Island Park, Carlisle, Cumbria CA2 5AS
Telephone: (01228) 631447

www.shelectricaluk.co.uk

SUDOKU Solution on page 22

		7			5			9
					8			
2		5	7	3				
3		9	2	1				
								4
8					9	3		
	7						3	
							9	
		2		8		6		1



SEAN CRILLEY
Independent Family Funeral Directors
78 Brook Street, Carlisle
"A Local Firm Proudly Serving Local Families"

For 24 Hour Personal Attention,
Call Sean on (01228) 544905
Private Chapel of Rest – Pre-Paid Funeral Plans
Memorial Consultants
www.seancrilleyfuneraldirectors.com
Email: sean@seancrilleyfuneraldirectors.com

Jean Corrighan
CateringCor
Weddings, Corporate Buffets,
Christenings, Home Entertaining,
Funeral Teas, Parties,
Cookery Lessons
FOOD STANDARDS AGENCY (LEVEL 5)
9 Newfield Park
Kingstown
Carlisle
CA3 0AH
Tel: 01228 401183
Mob: 07762 012439

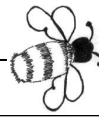
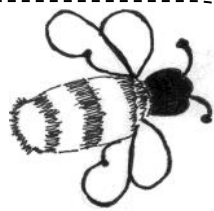


LAWN-ORDER
Tree and Ground Maintenance
ALL TYPES OF TREWORK
UNDERTAKEN
Chainsaw Sculptures, Free Standings,
Trees removed stumps carved.
01228 711835 or 07940 562391
johnstongl@btinternet.com
Fully Insured / Free Estimates

FROM THE ROCLIFFE AND CARGO PARISH MAGAZINE
October 1953

Where there is a family of children, it is found that Wellington boots take up a lot of storage space. If the smaller ones are turned upside down they can be slipped inside the larger ones, legs slipped into legs. Thus two pairs can be stored in the space of one! What is more, dust cannot settle in them so much as if they stand singly. Take care that to ensure the boots are completely dry before storing.

Eden and Lyne Buzz



ROCKCLIFFE C of E SCHOOL

It's always a busy time at Rockcliffe CE School and this term has been no different to normal. January saw the arrival of our new school minibus. This was purchased to allow groups to easily access opportunities in and around Carlisle. Over the last few weeks it's been busy shuttling groups to swimming, climbing, booster sessions at Trinity School and various sports competitions. It's also allowed us to extend our PE provision; our Year Five children have been learning to ski as part of their PE this term. They have all had lessons at Carlisle Ski and Snowboard Club where they've been learning to master the snowplough and the snowplough turns. Our instructor, Eric Barlow, has been fantastic and all of the children have done particularly well. We'll be building on these skills towards the close of the year.

The multi-use games area (MUGA) continues to be available each evening for groups to make use of the floodlit facilities. The MUGA can be booked by through the school office on 01228 674631.

All of the Key Stage Two children took part in the Carlisle Music Festival, Large Choirs category in March. Although we didn't win, we made good improvements on our first entry in 2017. The children performed two songs Badgers and Hedgehogs along with Little Spanish Town. The children were tutored by Ed Taylor from Carlisle Cathedral and by Mrs. Jones here in school. All the parents who attended told me it was a great performance – I'm just sorry that I couldn't be there.

Playgroup continues to be popular on Monday and Thursday mornings meeting before our Nursery provision opens at 11.30am. We have also been trialling morning sessions since January and we hope that this has been useful for our parents. Our Foundation Unit had a Ladies Afternoon Tea just before Mothering Sunday. Mums and Grandparents descended on the school for an afternoon of activities and pampering.

We have been joined during the term by Mrs. Gate who is working with Years Five and Six until the end of the school year. She has settled in really quickly and making a huge impact at the top of the school. Our Year Six have also been informed of their Secondary school choices and everyone is pleased with where they are going. We now await details of who will be starting school in September 2018. The details are due to be emailed out on April 16th and we hope to see you and your children here at Rockcliffe from September.

David Hodgkiss

Head Teacher, Rockcliffe CE School

News from Crindledyke

The last Residents' Association Meeting had to be postponed due to the 'Beast from the East'. We will now meet on **Thursday, 5th April, 7.30pm at the Thyme Bar (Jct 44 Premier Inn)**. For further information, or to become a member, please contact 01228 672427. It's £5 per year and includes a subscription to this magazine.

On Saturday, 19th May from 3.00PM we will celebrate the **Royal Wedding with a Street Party**. Bouncy Castle, games, cake, fancy dress competition... it'll be great! More information will be out soon. In the meantime, and if you're a resident of Crindledyke, please join our Facebook Group **Crindledyke Live!**



Young people still leaving their emails wide open to hackers

A new survey suggests that half of young people aged 18-25 use the same password for multiple online services, making it easy for criminals to hijack their accounts. The survey from Cyber Aware, the government's online safety campaign, is aimed at getting young people to understand the importance of using different passwords for different accounts ... not least email. But the advice is a wake-up call for everyone – not just young people. Here's why. If you use the same combination of email address and password for your email account as you do for other services and it is compromised by either a data breach or inadvertently revealing it – it makes it fast and easy for your email to be hacked too.

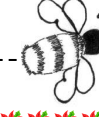
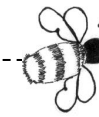
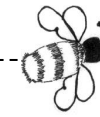
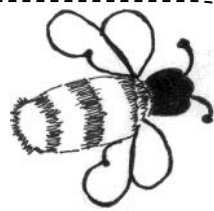
The danger is two-fold:

Anyone controlling your email account can impersonate you to commit fraud, identity theft, or both.

Any sensitive data you send via email can be intercepted.

Cyber Aware recommends that you use a strong and separate password for email accounts, and that the names of family members, pets or sports teams should not be incorporated when choosing passwords. This is because these details can be easy to ascertain from social media profiles and posts – a favourite source of information for criminals. It also recommends that, where available, users should take advantage of 2 factor authentication for additional security – normally done by an SMS message or automated call to the user's nominated mobile device.

Eden and Lyne Buzz



BLACKFORD AND ROCKCLIFFE CRAFT FAIR

SUNDAY 13TH MAY 2018

10am to 5pm

To help, book a stalls or be involved with teas and refreshments, please contact Joan on 675166, Ann on 01228-674363 or Barbara on 674382



Don't lose out – share in £155,000 community benefit funding from the Beck Burn Windfarm

Is your local charitable group or organisation looking for funding? Are you an individual needing some help with funding for a training course or apprenticeship? Then apply to the BECK BURN WIND FARM COMMUNITY FUND.

Applications will be considered in April and October. Operated by EDF Energy Renewables, The Beck Burn Wind Farm contributes around £155,000 annually for the benefit of the communities of the Cumbrian Parishes of Rockcliffe, Westlinton, Arthuret and Kirkandrews on Esk, along with other Scottish Community Councils.

The community investment fund provides a valuable, long term, flexible and sustainable source of income which can address important community projects.

To find out more on fund criteria and eligibility and to download an application form visit: Cumbria Community Foundation's website www.cumbriafoundation.org or phone 01900 825760.

SMALL GRANTS: Both Rockcliffe and Westlinton Parish Councils have access to funds each year. Local Community Groups can apply for small grants up to £1000, directly from their Parish Clerks: Mrs Lesley Faulder (Clerk to Rockcliffe PC) or Mrs Dorothea McKay (Clerk to Westlinton PC) – see Parish Council Pages in this magazine for contact details.

BLACKFORD PCC

Our Group of Flower arrangers are happy to help provide your floral needs. Please contact

April: Mrs J Forrester: 792775

May: Mrs C Hewson: 674699

June: Mrs Nicholson: 674387



BLACKFORD WI

As the school will be closed for Easter, for our next meeting on April 9th we will be having a meal at The Auctioneer at 7pm.

Specialist wills, tax & probate solicitor

One of the few true specialists with over 25 yrs experience & additional specialist qualifications - large city firm experience without the high prices - has saved millions of £'s Inheritance Tax.

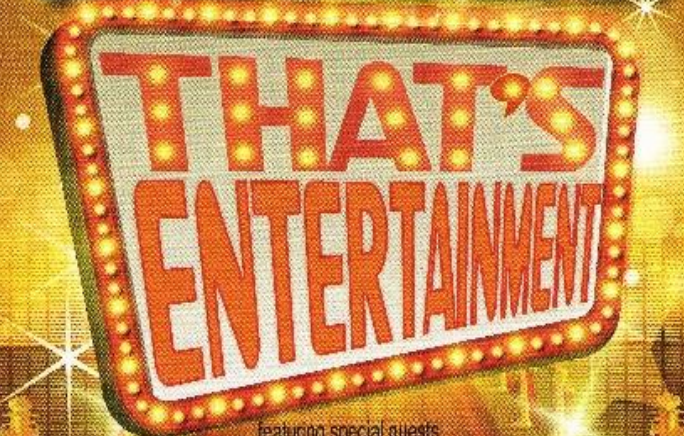
Lynn Emery LLB(Hons) Solicitor (TEP)

Tel: 016974 78303

Mob: 07901 229218 Email:

LynnAEmery@aol.com

IN AID OF FUNDS FOR NEWMAN SCHOOL CHAPEL



featuring special guests
COMPERE: BBC RADIO CUMBRIA'S VAL ARMSTRONG
AT THE SANDS CENTRE, CARLISLE
FRIDAY, MAY 11th at 7.30pm

Tickets available from SANDS CENTRE, Carlisle 633766

Eden and Lyne Buzz

CHILDREN'S PAGE

Easter Word Search



Word List
 BONNET
 RABBIT
 EGG
 BASKET
 BUNNY
 LILY
 LAMB
 CROSS
 PALM
 BUTTERFLY

Spring Sudoku



Every row, column and mini-grid must contain the letters F L O W E R B U D.
 Don't guess - use logic.



PRIZE Children's Poetry Competition for the Under 18s.

Write a short poem with the title "SPRING FLOWERS" A £5 Book Token for the best entry received by 25th MAY 2018.

Email to edenandlynebuzz@gmail.com with your entry and contact details



Eden and Lyne Buzz



www.edrobertsheating-carlisle.co.uk

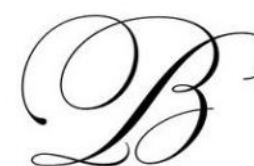
SPECIALIST OIL-FIRED HEATING ENGINEER

We are a Carlisle based oil-fired engineer company specialising in heating systems, boilers and cookers.

Working across Carlisle and Cumbria, we offer you a reliable customer focussed service.

Call 01228-522 445 for details

AGA AND RAYBURN SPACE HEATERS SERVICING AND REPAIRS
 OIL-FIRED HEATING



Brodie
 Accountancy and
 Tax Services



Martin Brodie - Chartered Accountant
 A personal approach to dealing with your
 accountancy and tax needs.
 Call 01228 818269 or 07912 617868
 For a free no obligation quote
www.brodieaccountancy.co.uk



SEAN LEIGHTON
 DOMESTIC APPLIANCE REPAIR

Tel:- 01228 674422
 Mob:- 07889060626

CONTACT US FOR

Washing machines - repairs & parts
 Domestic appliances
 Electrical appliances - repairs & parts
 Fridge freezer repairs
 Microwave ovens - repairs & parts
 Tumble dryer and White goods repairs
 Cookers, stoves, ovens - repairs & parts
ALL MAKES AND MANUFACTURERS
SALES OF NEW and SECONDHAND
APPLIANCES

WEBSITE

<http://www.seanleightoncarlisle.co.uk>
 Email: info@seanleightoncarlisle.co.uk

Showroom:

Unit 14, Carlisle Enterprise Centre,
 James Street, Carlisle, Cumbria,
 CA2 5BB



WALKER'S

KATIE WALKER
 FUNERAL DIRECTOR
 24 HOUR COMPLETE SERVICE
 PRIVATE CHAPEL OF REST

www.dignityfunerals.co.uk
walkers.carlisle@dignityfunerals.co.uk

80 Wigton Road, Carlisle CA2 7AY
 Tel: 01228-515650



Eden and Lyne Buzz

ROCKCLIFFE PARISH COUNCIL

Parish Council meetings are held on the third Monday of every odd numbered month (Jan. Mar etc), in the Rockcliffe Community Centre at 7:30 pm.

NEXT MEETING The Annual Parish Meeting is held on the third Monday in May at 7:00 p.m. Members of the public are most welcome to attend the AGM.

Clerk/RFO to the Council

POST VACANT

ALL ENQUIRIES TO THE CHAIRMAN

E-Mail: rockcliffepc@carlisle.gov.uk

Parish Councillors

Cllr John Harper (Chairman) - Tel: 01228 674547

E mail: john50jmh@aol.com

Cllr Robert Park (Vice-chair) - Tel: 01228 674217

E mail: rpark@park-gate.co.uk

Cllr Hazel Graham - Tel: 01228 674372

E mail: paul.graham57@btinternet.com

Cllr Maurice Irving - Tel: 01228 595117

E mail: rockcliffepc@carlisle.gov.uk

Cllr Giles Mounsey-Heysham - Tel: 01228 674792

Email: GMounseyHeysham@savills.com

Cllr S Sidgwick - via Tel: 01228 595117

E mail: rockcliffepc@carlisle.gov.uk

Geoff Moss - Tel: 01228 674327

E mail: gmoos101@aol.com

Gordon Percival Tel: 01228 595117

E mail: rockcliffepc@carlisle.gov.uk

Judith Twentyman - Tel: 01228 674441

E mail: gtwentyman@btinternet.com

COUNTY & CITY COUNCILLORS

County Cllr V Tarbitt - Longtown Division

016977 42247 E mail: val.tarbitt@cumbria.gov.uk

City Cllr J Mallinson - Longtown & Rockcliffe

01228 533746 Email: John.Mallinson@carlisle.gov.uk

City Cllr R Bloxham - Longtown & Rockcliffe

016977 42088

E mail: Ray.Bloxham@carlisle.gov.uk

Meetings Minutes and Agendas etc are available on the website at <http://www.rockcliffeparishcouncil.co.uk>

Wanted
GOOD QUALITY
LOCAL PHOTOGRAPHS
FOR FUTURE EDITIONS

WESTLINTON PARISH COUNCIL

Contact: Clerk: Mrs D V Mackay –

Tel: 01228 674238

Email: ian.dorothea@hotmail.com



www.kingmoorparishcouncil.org

Cllr. Rob Graham, Chairman

Cllr. James Ruddick, Vice Chairman

Cllr. Barry Colville, Cllr. Margaret Dickson,

Cllr. Lesley Faulder, Cllr. Mike Kirkwood,

Cllr. Mick Jones, Cllr. Geoff Wade

Clerk - Sonia Hutchinson Tel: 07989341147

Email: clerk@kingmoorparishcouncil.org

HEATHLAND'S COMMUNITY GARDENS



Space available for local residents wanting extra space to grow produce, fruit etc.

One-off joining fee £25

- plus annual Liability Insurance

Polytunnel space will also be

available in the spring.

Enquiries to

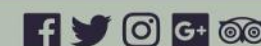
Tony Parrini 07809 154999

Eden and Lyne Buzz



KIRKLINTON HALL & Gardens
Opening from 1st April 2018
Weekdays & Sundays 12-5pm

1st April - Grand Opening
23rd April - Digital Photography Course with Tricia Meynall
28th April - Ghost Hunt
9th May - Digital Photography Course with Tricia Meynall
20th May - Fairy Day with Magical Mel
1st-2nd June - Drove T Drink - The Call of The Hall
8th June - Kirklington PCC Summer Fair
14th July - The Barber of Seville Opera in aid of The British Red Cross
12th August - Open Garden in aid of The British Red Cross
18th August - Picnic Cinema
29th September - Paranormal Event



Kirklington Hall, Kirklington, Carlisle CA6 6BB
Find us 10 mins from Carlisle

www.kirklingtonhall.co.uk



The Rockcliffe Centre

The Rockcliffe Centre has a wide variety of activities both during the day and in the evenings. You are very welcome to join any of them and should get in touch with the person listed below for further details of any that take your interest.

Monday- Bowls 1:30-4pm contact **Ann Hay on 01228 674363**

Tuesday -Tuesday club (alternate Tuesdays) 1:30-4pm contact **Ann Hay on 01228 674363**

Beginners Dancing 6:30-9:30pm contact **Kath Hunter on 01228 528166**

Yoga Flow 7-8pm contact **Dawn Whittington on 07850076059**

Wednesday- Core Deorce 6-7pm contact **Pauline Buttress**

Dog Training 7-9pm contact **Gary on 07538747619**

Thursday- Dog Obedience classes 11am-noon contact **Sheila Hind**

Dancing 6:30-9:30pm contact **Kath Hunter on 01228 528166**

Friday- Whist (2nd Friday of every month) 7:30-10pm contact **Hazel Graham on 01228 674372**

If you run or know someone who runs an activity and you think the Rockcliffe Centre is a suitable venue, then please contact **Nicola Johnston on 07592563159** to see what days and times are available.

The Rockcliffe Centre is available for Meetings, Family Functions and Community events. For details of our very reasonable charges, please contact **Nicola Johnston on 07592563159**.



Eden and Lyne Buzz

FOCUS ON KINGMOOR

At a cost of £4.5 million, Kingmoor New Yard was one of the largest and most ambitious projects undertaken during the modernisation of British Railways. The site chosen for the Kingmoor New Yard was a strip of land alongside the old Caledonian main line to Glasgow which was purchased in 1956 with work beginning 3 years later in 1959. The yard was fully operational in 1963. In the mid 1960's Kingmoor Yard was very busy. The peak number of trains handled in a day was 134 whilst the largest number of wagons sorted was 4,050 in DAY!!!

However the opening of the M6 motorway resulted in a decline in freight services during the 1970's which continued into the 1980's. Many have predicted the complete disappearance of the Kingmoor Yard but it is still in existence today.

During its time Kingmoor became the "graveyard" as the "Golden Age of Steam" came to an end and many famous locomotives were stripped of their dignity at Kingmoor before the metal was taken to steelworks in West

Cumbria – the early days of recycling! However, on the far side of tracks Direct Rail Services repairs and commissions the newest Diesel Electric locomotives in service on our railways today.

Kingmoor is now the home of BSW Timber covering a 15 hector site much of it the old Marshalling Yard area. It operates 75 hours a week and has the ability to process

330,000 cubic metres of roundwood a year producing 178,000 cubic metres of sawn timber products.

But nothing is wasted. Much of the timber is dried in on-site kilns which were previously fuelled by gas boilers but by using wood chip and bark stripped from the raw product, The Mill has the ability to generate electricity from biomass fuel using a £2.5 million Combined Heat and Power (CHP) boiler to generate heat for the kiln drying process. The state-of-the art 3.2 MW CHP Boiler is now operational and forms the latest phase of BSW's £11 million investment programme in biomass energy across its mills in the UK and Latvia. The system provides heat for the kilns, treatment plant, and offices whilst also producing electricity to be used in the sawmill production process. The investment in biomass technology means that BSW is saving more than 12,500 tonnes of CO2 (3,421 tonnes carbon) each year, across the business.

As we know the raw product is home-grown sawn softwood timber felled from forests in the region. Much of it arrives by road in 40 tonne loads. However, there is an increasing effort to bring timber into the yard by rail.



Eden and Lyne Buzz

CARGO – What's in a name?

Taken from information provided by Jean Williams of Cargo and other references.

In 1870-72, John Marius Wilson's *Imperial Gazetteer of England and Wales* described Cargo like this:

CARGO, or Craghow, a township in Stanwix parish, Cumberland; on the river Eden, adjacent to the Silloth railway, 3 miles NW of Carlisle. Acres, 1,196. Real property, £2,553. Pop., 262. Houses, 63.

Records and Archives can trace the village of Cargo back to the 12th Century when the village was known as Carcaou in c1178. Subsequent records show derivatives of the name as follows:

Kagho in 1195, Cargou in 1240, Cargo in 1303, Karghowe in 1339, Carhowe in 1374, Cargoo in 1551, Carighow and Carghow 1610, and Curgs in 1658.

"Carrecc" means "Rock" in old Welsh and "Haugr" means "hill" in old Norse. Cargo stands on a long hill rising above the marshes suggesting that old names would translate into "Rocky or Craggy Hill".



Young Hutcheon Graham of the Border Reiver Graham's family ran a profitable protection racket at the end of the 16th Century at the expense of Cargo Village. Each farmer paid four bags of malt as "Blackmail" to avoid trouble from the Grahams. From Cargo's point of view it was worth it; for in 1603 during "Ill Week" (See Note 1) Hutcheon Graham with a few hundred raiders, burned and looted the English West Marsh whilst Cargo remained untouched. He used Cargo as his base and divided the spoils there and many of the villagers joined his ranks. (The West, East and Middle Marshes were areas on both sides of the English/Scottish Border which was not in the same recognised position today).

Hutcheon Graham swept over Cumberland as far as Penrith until Sir William Selby, Governor of Berwick intercepted them with a force of a thousand horsemen. Those captured were hung there and then including John Storey from Cargo. The others were followed to their homes and Selby's men burned them all down. Through this and

previous troubles on the West Marshes, the Graham's were later banished to Ireland in 1606. Later, in 1745 Cargo was one of the crossing places on the River Eden of the Young Pretender's invasion of England, when the Jacobite Rebellion went forth to Carlisle. The invasion began in early-November, when the Bonnie Prince Charlie led his army into northern England. He laid siege to Carlisle in mid-November and later entered the city with 5,000 infantry and 500 cavalry troops. After gathering all the ammunition, arms and horses they could from Carlisle, the Jacobites continued south. Charles then took Manchester with ease. Moral inside the Jacobite ranks swelled, and the English throne seemed within grasp. However, the Duke of Cumberland was recalled from France joined forces with the army of Field Marshal George Wade and Bonnie Prince Charlie found himself being converged upon by two armies and decided to flee north to the safety of Scotland. Being familiar with the territory one wonders whether he came back via Cargo?

NOTE 1 "Ill Week" is recorded in 1603 when James VI of Scotland was made James I of England, known as the week of the Union of England and Scotland. The Scottish Border Reivers thought that Scotland had taken over England and that they could raid and plunder as no one had authority to stop them.

Bonnie Prince Charlie's Route

References: <http://www.reivershistory.co.uk/>
<https://britishheritage.com/jacobite-rebellion-1745/>

