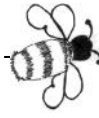


Eden and Lyne Buzz

April and May



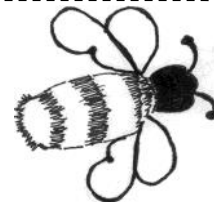
*FOR THE COMMUNITIES OF ROCKCLIFFE, CARGO, HARKER,
BLACKFORD, WESTLINTON AND ALL POINTS IN BETWEEN*



"Ladies Lonning, Rockcliffe at its best – March 2017"



Eden and Lyne Buzz



EDEN AND LYNE BUZZ **CONSTITUTION**

Eden and Lyne Buzz is a community magazine run by unpaid volunteers on a not for profit basis.

Eden and Lyne Buzz is run by a group of volunteer Trustees who, for the time being are Mr A L Parrini (Chairman and Editor), Mrs Janette Fisher (Treasurer), Mrs Judith Twentyman (Secretary) and Mrs Ann Hay (Advertising Coordinator).

The Bank Account will be held by The Cumberland Building Society.

All payments out of the account will be by Cheques signed by the Treasurer and 2 other Trustees.

Legitimate expenses are available if requested by volunteers and Trustees if approved unanimously by the Trustees.

Eden and Lyne Buzz will be published 6 times per year.

Subscriptions and Advertising Rates will be set by the Trustees in April each year based on the financial results of the previous year's trading.

The Trustees will invite all subscribers to attend an AGM in May each year to present the accounts and agree the distribution of any surplus funds held.

Keep it simple to **stop identity fraud.**

With 88% of all identity frauds being committed online, we know that cybercrime and financial fraud are inextricably linked.

Although both topics hit the news regularly, for most businesses and consumers, it remains a dry subject. When people are being bombarded with information from all angles, it can be easy to miss essential security advice that can prevent you becoming a victim.

HERE'S FIVE SIMPLE STEPS:

Use three random words to create a strong password, especially for email and banking accounts;

Always download the latest software updates.

Don't share your PINs and passwords;

Listen to your gut instincts;

Most of all, take five before responding to an unexpected email or phone call.

Stay aware and share these simple steps with your friends, colleagues and loved ones.

WHAT'S ON **AND** **FUTURE EVENTS**

9th April – Daffodil Sunday at 2pm

14th to 17th April – Easter Weekend

1st May – Early May Bank Holiday

**4th May – Election of County Councillors
for the Longtown Division**

**7th May – Craft Fair – 10am to 5pm in
Rockcliffe Centre (See Advert in this Issue)**

**13th May – Health Mela in City Centre
(See advert in this issue)**

29th May – Spring Bank Holiday

**29th May – Car Boot Sale at St Augustine's
(See Advert in this issue)**

24th June – Armed Forces Day in City Centre

30th June – Fashion Show - Rockcliffe Centre

2nd July – Garden Fete (Castletown)

28th August – Bank Holiday

**1st October – Harvest Festival and Supper
(Rockcliffe)**

28th October to 11th November – Poppy Appeal

4th November – Fireshow in Bitts Park

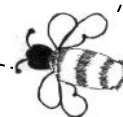
12th November – Remembrance Sunday

26th November – Rockcliffe Christmas Fair

IF YOU HAVE DATES YOU WISH TO ADD TO THIS LIST

PLEASE SEND DETAILS TO

edenandlynebuzz@gmail.com



Eden and Lyne Buzz



WELCOME TO THE EDEN AND LYNE BUZZ

BUZZ – an atmosphere of excitement and activity or to talk, often excitedly.

We have been without regular means of communication amongst the villages north of the City for almost a year. A recent Parish Council meeting sought to investigate the possibility of setting up a new magazine and this publication is the first effort to try to fill the gap left since the previous magazine failed to appear.

Thanks to the generosity of 6 local people in Rockcliffe, this edition comes to you FREE OF CHARGE in the hope that you will like what you see and be willing to pay a new subscription for the next 5 Editions through to March 2018. To make this happen we also need advertisers to support the magazine and for our readers to support the advertisers by using their services and mentioning “The Eden and Lyne Buzz”.

HELP REQUIRED

This first edition is being laid out and printed commercially and whilst efforts are being made to get “the best deal” for future editions, it would certainly help if someone who can use “Publisher”

steps forward to lay out the material more professionally in future.

It would also be great to have correspondents in Harker, Blackford, Cargo, Kingmoor, Crindledyke as well as Rockcliffe to keep their ears and eyes open for material suitable for the magazine. Help is also needed to distribute the magazine to new areas and thus increase the readership.

The “Eden and Lyne Buzz” is a community magazine and we are seeking new articles and ideas to improve the publication and make it the best means of communication of events, services and local news stories – so we need the community (YOU, THE READER) to feed information and ideas to our email address.

We hope you like this first edition of the “Eden and Lyne Buzz” – if so please be ready to pay a new subscription of £5 in early June when the next edition becomes available.

So please help us to make a success of our efforts and let’s get the airways “buzzing” with news and details of events.

Trustees

**Mrs Ann Hay, Mrs Judith Twentyman,
Mr Tony Parrini and Mrs Janette Fisher**

EMAIL ADDRESS: edenandlynebuzz@gmail.com

NEXT COPY DATE

It is hoped that the Eden and Lyne Buzz will be produced 6 times a year at the start of the even months

Feb, Apr, Jun, Aug, Oct and Dec.
Material can be sent at anytime to
edenandlynebuzz@gmail.com

**The final date for material for the Jun/
Jul Edition is WEDNESDAY 17th MAY
2017.**

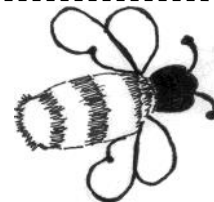
**PLEASE SUPPORT OUR ADVERTISERS AND
MENTION “Eden and Lyne Buzz”
when you do.**

DISCLAIMER

The Eden and Lyne Buzz is produced for residents in the Rockcliffe, Kingmoor and Westlinton Parish Council areas. The magazine seeks to serve the local community by including local community events, advertisements and items of local interest. Inclusion of such material in the magazine does not imply that the Trustees endorse everything that is mentioned, nor are they responsible for any inaccuracies in the information supplied.



Eden and Lyne Buzz



theWI INSPIRING WOMEN

BLACKFORD

W.I.

10 members and one guest, Joan, met on Monday 13th March.

Apologies were received from

Christine and Isabelle. We held a minutes silence after hearing of the death of Nan Weightman who had been a member of Blackford W.I. for many years.

The Secretary read out the minutes of the last meeting of 13th February and these were approved and signed. Everyone had their copy of the County News so we had a read through the relevant parts. Members attending the meeting at Cummersdale on 12th April were given a reminder.

The Secretary informed us that our annual joint meeting with Longtown W.I. is now to take place in November instead of July. Suggestions regarding our July meeting were requested.

We have had a reply from Walton W.I. to confirm they are joining us on 8th May.

Linda then introduced our speaker - Isabel Ferguson of Acorn Bank to do her presentation on paper craft. The table was laden with her lovely flower creations, mushrooms, boxes and jewelry. Isabel explained all about the different papers she uses and that it is a bit like Japanese style flower making called origami. We all then had to make a flower under her supervision. It was very clever the way 4 paper squares were transformed into a lovely flower. We all enjoyed it and Barbara gave the vote of thanks.

Isabel then judged the competition for a pretty birthday card and Mabel won this. Refreshments were then served and the free raffle was won by our visitor, Joan.

As the school will be closed next month for Easter we will be arranging to have a meal out somewhere and we are all to meet at the School at 6 pm.



BLACKFORD PCC St John's Church, Blackford – Flower Rota 2017

We have very skilled flower arrangers who will be happy to arrange flowers in Church on your behalf. If you would like to supply flowers or ask

the flower committee member to buy them on your behalf for a special commemorative day please contact the committee member on the rota to discuss your needs and prices. Please contact:
April: Mrs P Faulder- 525983 May: Mrs J Forrester 792775 June: Mrs C Hewson 674699



DO YOU NEED SOME EXTRA GROWING SPACE??

The Heathland's Community Garden near Rockcliffe has plots and polytunnel spaces available. Now is the time to get started for this year's crops.

No annual rental, joining fee £25.

Contact Tony on 07809-154999 for further details.

Cumbria Shotokan Karate

Beginner Classes

At The Rockcliffe Centre

Adults: Mon & Wed - 7.00pm-8.00pm

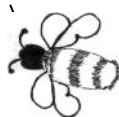
Children(6-12yrs): Mon - Wed 6.00pm-7.00pm



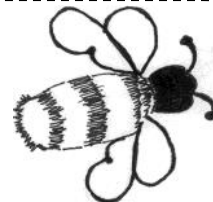
JKS England
日本空手松涛連盟



Find us on
Facebook
Cumbria Shotokan Karate



Eden and Lyne Buzz



*Blackford and Rockcliffe PCC's Craft Fair
in The Rockcliffe Centre
on Sunday 7th May 2017
10.00am to 4pm
Craft Stalls
Blackford Church Stall
Rockcliffe Church Stall
Coffee, Lunches, Teas, Raffle
Please come along, support this even and
enjoy delicious homemade food*



CAR BOOT SALE
SPRING BANK HOLIDAY MONDAY 29th MAY
St Augustine's Church Grounds
(Opposite Morrisons)
Gates open for sellers at 7am
TO BOOK AND FURTHER DETAILS CONTACT MI-
CHAEL
ON 07796-102996



**SMITHFIELD
GARAGE**

Kirklington / Carlisle

Car & Van
Servicing & Repairs
M.O.T.'s on Cars,
Large Vans
& Motorcycles
Extensive Body
Shop Facilities

**Tel: 01228-675467
Fax: 01228-675158**



MILK & PAPER DELIVERY

Daily & Sunday Newspapers

Magazines & Periodicals

ALSO

All Dairy Products

delivered to your doorstep

Ring or Text:

Mobile: 07932 965 618

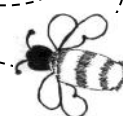
SUSAN BLAND

BSc hons Pod.
CHIROPODIST/PODIATRIST

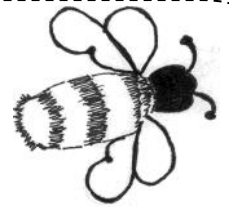
h.p.c registered
For a surgery Appointment
phone reception at Dalston
Medical Practice
TEL: 01228 701451

**For home visit phone
016977 47235**

**WANTED FOR FUTURE
EDITIONS:
GOOD QUALITY
LOCAL PHOTOGRAPHS**



Eden and Lyne Buzz



Todhills Sloe Gin Competition

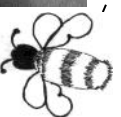
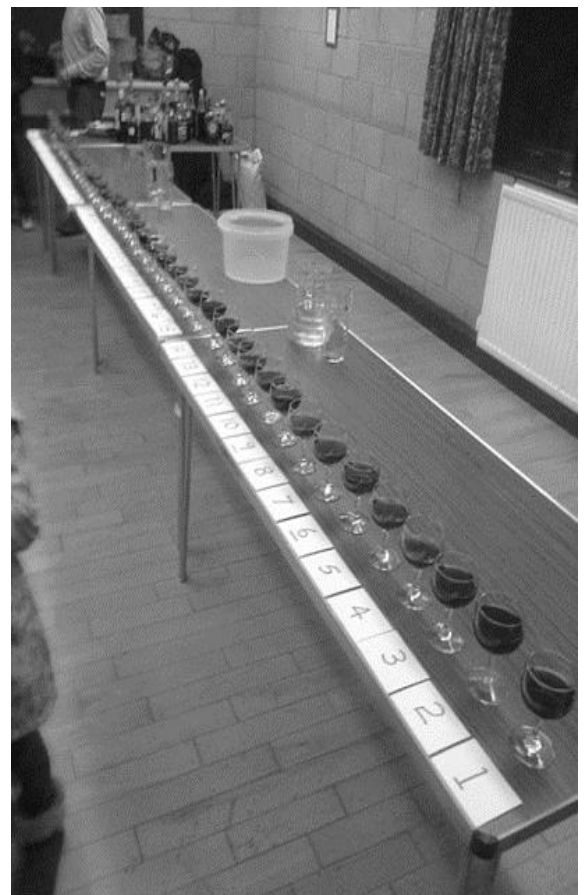
Well, what a year this turned out to be for the New Year's Day Sloe Gin competition! A record 48 entries, up from 31 in 2016, faced this year's Sloemaster (judge) Councillor Val Tarbitt. Splendidly attired for the occasion in a much-admired and somewhat Bohemian Tuxedo suit, the Sloemaster adopted a new methodology, setting about the task in hand by

sampling the entries in batches of four. After the first sweep, with comments being relayed to the packed hall by co-organiser Councillor Steve Sidgwick, the Sloemaster, now in the swing of things and clearly enjoying the job, had another sweep of the surviving entries, this time in batches of six. With great care, the two Councillors, who usually spend time on the opposite sides of the political divide, worked in harmonious collaboration, Sloemaster Val proceeding to sample and judge and Sloe-marshal Steve organising the glasses. Eventually the three podium positions emerged. Another discerning sip and they were allocated their final standings. Perhaps unsurprisingly, despite the record entry, the winners came from some of the long established and recognised sloe-gin stables. The 2017 champion, and winner of the Rose Bowl, was Entry No 2, past winner Robert Park. In second place was young Fern Roberts (Entry 14), and third slot was taken by Pauline Tyler (Entry 4).

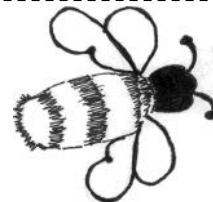
The competition, which originated in Todhills in the last century with a handful of entries, is developing into a stadium event under the direction of organisers Geoff Moss and Steve and Therese Sidgwick with a number of helpers including Kerry Moss who provided a lovely buffet.

Spectators spent time sampling the winning entry, again a worthy winner, the sharp flavour of the blackthorn drupes expertly blended with the aromatic gin and sugar by a seasoned producer.

SEE YOU AT THE NEXT EVENT ON NEW YEAR'S DAY 2018



Eden and Lyne Buzz



www.edrobertsheating-carlisle.co.uk

SPECIALIST OIL-FIRED HEATING ENGINEER

We are a Carlisle based oil-fired engineer company specialising in heating systems, boilers and cookers.

Working across Carlisle and Cumbria, we offer you a reliable customer focussed service.

Call **01228-522 445** for details or

Email edroberts323@yahoo.co.uk

AGA AND RAYBURN SPACE HEATERS SERVICING
AND REPAIRS OIL-FIRED HEATING

PLEASE SUPPORT OUR ADVERTISERS AND MENTION
"Eden and Lyne Buzz"
when you do.



KIRKLINTON HALL & Gardens

Opening Times: Sunday to Friday, 12noon-5pm
(closed Saturdays for public and private events only
by appointment, all year round)

Admission: Adults £4.00; Children under 16 £1.00.

Season Tickets available Single £10; Family £22.

Free to HHA members, Kirkclinton Season Ticket
Members and My Cumbria Card Holders.

Accessibility - The site is accessible for wheelchairs in
the Hall, Shop, Toilet and Terrace but most of the
woodlands walks are not.



STAMPS REQUIRED FOR EDEN VALLEY AND JIGSAW CHILDREN'S HOSPICES.

**YOUR USED POSTAGE
STAMPS AND**

**OLD COLLECTIONS CAN PROVIDE A USEFUL
SOURCE OF INCOME TO THE LOCAL HOSPICES.**

**ANY DONATIONS CAN BE LEFT WITH
THE HOSPICE BOOKSHOP IN LOWTHER STREET,
THE HOSPICE SHOP IN LONSDALE STREET
OR WITH TONY PARRINI
AT HAMETHWAITE, ROCKCLIFFE CA6 4AB**



You are asked to
support Carlisle
Food Bank by
leaving your
donations at the
back of Blackford,

Rockcliffe or St Augustine's Churches. If you wish to
donate but are not able to take the items to a
church, then please ask a churchgoer to take the
items for you.

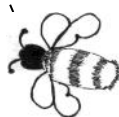
SUGGESTED ITEMS

Milk (UHT or Powdered). Sugar. Soup – tinned or
packet. Pasta Sauces – jars, tins or packets.
Tomatoes – tinned. Rice and Dry Pasta. Pot
Noodles. Cereals. Rice Pudding – tinned. Tea Bags.
Instant Coffee. Tinned Meat/Fish, Baked Beans,
Ravioli, Spaghetti. Jam, Marmalade, Biscuits and
Snack bars.

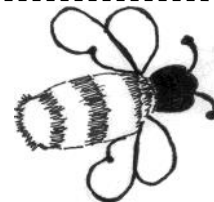


**Every Thursday at
10.30am**

**Coffee Mornings
in the
Crown and Thistle
All Welcome**



Eden and Lyne Buzz



ROCKCLIFFE PARISH COUNCIL

Parish Council meetings are held on the third Monday of every odd numbered month (Jan. Mar etc), in the Rockcliffe Community Centre at 7:30 pm.

NEXT MEETING The Annual Parish Meeting is held on the third Monday in May at 7:00 p.m. Members of the public are most welcome to attend the AGM.

Clerk/RFO to the Council

Mrs Andrea McCallum Tel: 01228 595117

E-Mail: rockcliffepc@carlisle.gov.uk

Parish Councillors

Cllr John Harper (Chairman) - Tel: 01228 674547

E mail: john50jmh@aol.com

Cllr Robert Park (Vice-chair) - Tel: 01228 674217

E mail: rpark@park-gate.co.uk

Cllr Hazel Graham - Tel: 01228 674372

E mail: paul.graham57@btinternet.com

Cllr Maurice Irving - Tel: 01228 595117

E mail: rockcliffepc@carlisle.gov.uk

Cllr Giles Mounsey-Heysham - Tel: 01228 674792

Email: GMounseyHeysham@savills.com

Cllr S Sidgwick - via Tel: 01228 595117

E mail: rockcliffepc@carlisle.gov.uk

Geoff Moss - Tel: 01228 674327

E mail: gmooss101@aol.com

Gordon Percival Tel: 01228 595117

E mail: rockcliffepc@carlisle.gov.uk

Judith Twentyman - Tel: 01228 674441

E mail: gtwentyman@btinternet.com

COUNTY & CITY COUNCILLORS

County Cllr V Tarbitt - Longtown Division

016977 42247 E mail: val.tarbitt@cumbria.gov.uk

City Cllr J Mallinson - Longtown & Rockcliffe 01228

533746 Email: John.Mallinson@carlisle.gov.uk

City Cllr R Bloxham - Longtown & Rockcliffe 016977

42088

E mail: Ray.Bloxham@carlisle.gov.uk

Meetings Minutes and Agendas etc are available on the website at

<http://www.rockcliffeparishcouncil.co.uk>

Rockcliffe Parish Council Meeting

Monday 20th March 2017

First thing may I take this opportunity to welcome back the new community magazine. The Parish Council found it an excellent way of informing parishioners of what we are all about and actions being taken on your behalf.

Public Participation

A lengthy discussion took place regarding the demise of the former magazine and how to replace it, measures that need to be taken to find funding and how the correct procedures can be put in place so it can be handed over. With the help of various individual donations it was hoped that a new magazine could be made available before Easter and distributed to residents. .

Dr B Irving of Solway Coast (AONB) explained ways of expanding its boundary to include all of Rockcliffe and some areas located in neighbouring parishes. Clerk to contact neighbouring parishes to see what level of interest they have in also being included.

Highways Items

Of current concern, is the road over the cliffs at Redhills. Cumbria County Council are currently undertaking geotechnical ground surveys to determine the extent of the problem and possible solutions.

Unsuitable for HGV sign at Floriston. CCC still to contact. No sign was put on after the signpost was replaced following an accident.

Flooding at the junction of the road to Redhills was also raised.

St Mary's Church, Rockcliffe

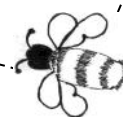
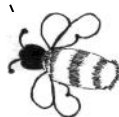
The Parish Council considered a request for a grant of £500 towards the grass cutting. It was agreed to give a donation of £430.

Rockcliffe Centre

A request for financial support towards repairs and improvements to lighting was considered. It was resolved that the £800 excess for the Cumbria Waste Management Environment Fund would be funded from the Skipton Bond, held on behalf of the Rockcliffe Centre by the Parish Council.

Beck Burn Wind Farm Community Fund

Editor's Note - See elsewhere in this issue for



Eden and Lyne Buzz



information regarding Grants. Rockcliffe Parish Council will have more information on this available in May.

Cast Iron Road Sign.

County Cllr V Tarbitt agreed to locate the whereabouts of the missing Wetherhill sign and the Parish Council are to obtain estimates for its repair. Summer Play Scheme 201.

This is to run again in the summer holiday, with two days being arranged.

Community Litter Pick – 22nd April 2017

Building on the success of last year's litter pick, the Parish Council is arranging for this years to take place on Saturday 22nd April. Please help keep the village litter free and support the council in this initiative. Please see posters around the village for details nearer the time.

Parish Meeting & Parish Council Annual General Meeting

Will be held on 15th May. Parish Meeting to begin at 7:15 pm followed by the Parish Council AGM.

This is only a very brief summary of the meeting. The full minutes can be found on our website www.rockcliffeparishcouncil.co.uk or via the notice boards.

John Harper
Chair Rockcliffe PC



www.kingmoorparishcouncil.org

Kingmoor Parish Council has eight Councillors plus a Clerk and meets in the Rockcliffe Centre, Rockcliffe every two months, usually on the third Thursday of the month.

All the Councillors are voluntary, part-time and take neither salary nor expenses whereas the Clerk, also part-time, receives a small salary.

Kingmoor Councillors are very 'hands-on' and are frequently involved in Planning site visits, meeting with City and County councillors regarding traffic calming measures, delivering leaflets, planting bulbs etc. It was as a result of the Parish Council efforts that Cargo now has a 20mph speed limit.

Cllr. Rob Graham, Chairman - Chair of Planning Working Group

Cllr. James Ruddick, Vice Chairman - Member of Planning Working Group

Cllr. Barry Colville - Member of Planning Working Group

Cllr. Margaret Dickson

Cllr. Lesley Faulder

Cllr. Mike Kirkwood

Cllr. Mick Jones

Cllr. Geoff Wade

Clerk - Sonia Hutchinson Tel: 07989341147 Email;

clerk@kingmoorparishcouncil.org

WESTLINTON PARISH COUNCIL

Contact: Clerk: Mrs D V Mackay –

Tel: 01228 674238

Email: ian_dorothea@hotmail.com



WALKER'S

Katie Walker & Sean Crilley
Funeral Directors

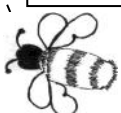
24 HOUR COMPLETE SERVICE
PRIVATE CHAPEL OF REST

www.walkersfuneraldirectors.co.uk

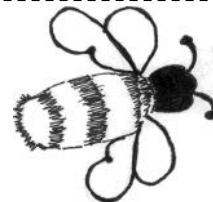
walkersfuneral@btconnect.com

80 Wigton Road, Carlisle CA2 7AY

Tel: 01228-515650



Eden and Lyne Buzz



The Vicarage, Rockcliffe, Carlisle, CA6 4AA
Rev'd Jan van den Berg – 01228-674209

GOOD FRIDAY – BAD FRIDAY??

NO!! Because while most of Jerusalem slept, something spectacular happened on that Easter morning, and it slowly dawned on the first disciples – and on us – that Jesus **IS ALIVE!** Mary came to the tomb, before dawn, and found that the stone had been moved. She ran off to find the other disciples, who, in their turn, ran to the tomb and found the grave empty. In the gospel we're painted a picture of some general confusion, added to by the fact that the linen body wrappings are found in the tomb. (This is no act of grave-robbers, then). Simon Peter pushed past 'the beloved disciple' and went into the tomb. Then we read that **'he saw and believed'**. This could be confusing because an empty tomb alone doesn't point to the Resurrection, although we might read it as suggesting its inevitability, rather than the fact. The disciples went home but Mary stayed, crying, outside the tomb. Well, this could be the cliff-hanger scene in any soap series – the tension hangs thickly in the air. When she next looked into the tomb, Mary saw angels who asked why she was weeping. So she shared her despair with them, turned round, saw a 'gardener' and spoke to him, but it wasn't until he spoke to her that she recognised her Lord. This is probably one of the most lovingly tender and personal encounters in the entire New Testament.

Resurrection hope dawned for Mary, secure in her relationship with the resurrected living Christ, but I know that he offers the same relationship and hope to a searching generation today. I know that beyond all our worldly challenges, there is a solid and secure and life-changing relationship. God is writing new chapters for us. Easter, and the days which follow, are a wonderful opportunity to discover another new chapter which God has written for us. So, let us grab this opportunity and celebrate the God who takes our story on and can breathe fresh life into our (often) flagging lives. For the power which raised Christ from the dead is at work in us to bring us to maturity in him. 'Happy Easter'!!

A prayer:

Lord, thank you for Easter Day, for the hope of fresh starts and new beginnings. I praise you that you are risen from the dead and active in my life today, by the same power that raised you from the dead. Breathe fresh life into these days to come that I may be alive with your life and filled with your power to display your glory. In Jesus' name. Amen.

**DO YOU HAVE A WILL AND IF YOU DO,
IS IT A GOOD WILL OR A BAD WILL?**

LYNN EMERY LLB(Hons) Solicitor(TEP)

**Specialist wills, tax &
probate solicitor**

One of the few true specialists with over 25 yrs experience & additional specialist qualifications - large city firm experience without the high prices - has saved millions of £ Inheritance Tax

Tel: 016974-78303 or 07901 229218

Email : LynnAEmery@aol.com

NM WINDOWS LTD

Window Cleaning, fascias and gutters.

Free quotes for regular
or one-off service.

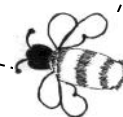
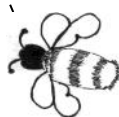
Commercial or domestic work.

Water-fed pole system.

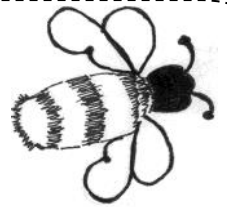
n.m.windows@live.co.uk

07787 860 217

facebook



Eden and Lyne Buzz



ROCKCLIFFE AND BLACKFORD **CHURCH SERVICES** **CHURCH SERVICES – APRIL 2017** **R = Rockcliffe B = Blackford**

SUNDAY 9th April

9.30 a.m. H.Communion (R)

11.00am. H.Communion (B)

GOOD FRIDAY

11.00 a.m. St. Mary's Church - Prayers around the cross

2.00 p.m. Lanercost Priory Church Devotional Service

EASTER DAY

9.30 a.m. Parish Communion at Rockcliffe Church

11.00 a.m. Service of Holy Baptism at Blackford Church followed by Communion.

SUNDAY 23rd April

10.00 am Morning Prayer (B) 11.00 am. Holy Baptism (R)

SUNDAY 30th April

10.30 am. United Communion (R) with Revd. Elizabeth Gough

CHURCH SERVICES – MAY 2017 **R = Rockcliffe B = Blackford**

SUNDAY 7TH May

9.30 am. H. Communion (R)

11.00 am. H. Communion (B)

SUNDAY 14TH May

9.30 am. Morning Prayer (R)

11.00 am H. Communion (B)

SUNDAY 21st May

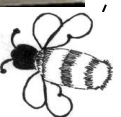
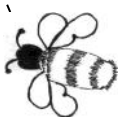
9.30 am. H. Communion (R)

11.00 am. Family Worship (B)

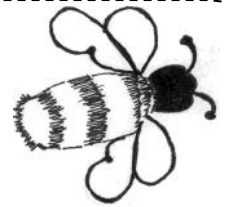
SUNDAY 28th May

10.00 am. Morning Prayer (B)

11.00 am. Family Worship (R)



Eden and Lyne Buzz



MASS TIMES

Weekends: Saturday - Vigil Mass at 6.30pm

Sunday – 10.30am

Holydays of Obligation

Vigil Mass at 7.30pm and at 9am on the
Feast Day

Weekdays:

9am – Monday, Thursday and Friday

7.30pm – Wednesday

10am – Saturday

Benediction – First Sunday of the Month in
Ordinary Times.

PARISH OF ST AUGUSTINE OF HIPPO

Parish Priest – Father Geoffrey Steel

01228-526765

10 Waverley Road, Carlisle CA3 9JU



1862 (City of Carlisle) Squadron

Royal Air Force Air Cadets



We are Recruiting Now!

Flying Gliding Parades Citizenship Fieldcraft Camps Duke of Edinburgh's Award

Adventurous Training BTEC Qualifications Marksmanship

Service Engagement(Royal Air Force)

Between ages 12 (Year 8) and 16? Know someone who is?

Contact the Squadron to arrange a visit during one of our parade nights.

Carlisle Air Cadet, Crindledyke, Kingstown Carlisle, CA6 4BZ

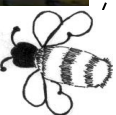
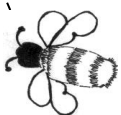
Google 'Carlisle Air Cadets' for directions

Monday & Friday 7pm till 9.30pm

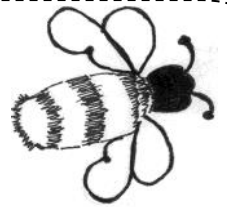
www.facebook.com/1862sqn

Phone 01228 674559

Email 1862@aircadets.org



Eden and Lyne Buzz



THE FLATLANDERS



**Live At
The Rockcliffe
Centre**

**Saturday 13th May
7.30pm**

Tickets £10 to include finger buffet

Contact Nicola 07775562170



ROCKCLIFFE TUESDAY CLUB

Retired and looking for something to do? Want to meet new friends?

Then come and join the Rockcliffe Tuesday Club at the Rockcliffe Centre.

Membership Fee £12 per quarter.

Programme through to July 2017

April 18 – The National Memorial Arboretum – Tony Parrini – 2pm

May 2 – Lunch at Hayton Farm Shop – Transport leaves at 12 noon.

May 16 – Buffet at Crown and Thistle – 12.30 for 1pm.

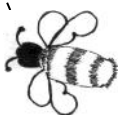
May 30 – To be arranged.

June 13 – Pride of Britain award – Jim Bell.

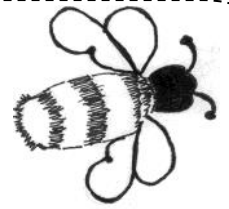
June 27 – Life Story - Charles Dunn.

July 11 – Tea in Castletown's Walled Garden – 2pm

For More Details contact Ann Hay (674363) or Winnie Brand (674470)



Eden and Lyne Buzz



Lawless Rockcliffe – in the 19th Century!

It is highly unlikely that anyone from Rockcliffe would indulge in cross-border smuggling nowadays. However in mid 19th Century it was a tempting source of income for certain individuals.

The different scales of duty in Scotland and England made smuggling a very lucrative occupation. Whisky and Brandy bought in Scotland could be sold in England at up to five times the price; and still make the risk of prosecution – and a possible gaol sentence worthwhile.

Part of what was looked at as a kind of game was the adventure of out-witting the local Excisemen. The authorities funded a local force of 3 or 4 Customs Officers whose role was to patrol the roads and water crossings from Springfield in Scotland to Todhills, Rockcliffe, and the Marsh.

There were of course also a number of illicit stills which the authorities targeted on regular raids. Evading the Exciseman may have seemed quite a sport to some but others of the time have recorded their belief that the profusion of spirits “resulted in a great loss of moral values and was detrimental to the health and well-being of the populace”.

Violence was not unknown and indeed in some instances firearms were used.

The late Harold Richardson, in his book ‘The Annals of Rockcliffe’, relates the following story in his chapter on local smugglers.

“On Saturday June 15th 1825 Edward Forster, Customs Officer, having seized some smuggled brandy called upon George Irving of Mossband in the King's name to give him assistance. After depositing the whisky in a byre at Rockcliffe Cross they went to Rockcliffe Marsh End on the lookout for smugglers and remained there till daylight. But it was not until the Sunday morning between 10 and 11 o'clock that two Wigton men, Charles Gillespie and Scott, together with a 15 year old boy William Nixon, were spied crossing the Esk in a boat. As they landed Forster seized Scott and took from him a quantity of whisky. Irving captured Gillespie, also laden with

over 5 gallons of whisky. The boy ran off leaving his load. All the whisky was carried in bladders.

There was no resistance and all proceeded to the Boat House. Scott had a stick about a yard long and Gillespie a blackthorn. Near the Boat house Scott bolted with Irving after him, Forster with Gillespie following behind. Irving stopped on hearing two pistol reports and returning found Forster badly injured about the head and Gillespie fatally wounded lying on the ground.

The people at the Boathouse refused to help the officers carry in the dead man for as usual the sympathy of outsiders was with the offenders, never the law. Smuggling of whisky in the vicinity of the Boathouse must have been a frequent occurrence.

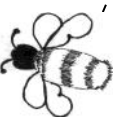
At Carlisle Assizes in March Forster was arraigned on a charge of feloniously slaying Charles Gillespie by shooting him with a pistol. In his defence Forster said while he was looking down at the bladders Gillespie struck him on the head from behind almost stunning him. He drew his pistol and cautioned Gillespie who continued to attack whereupon Forster fired at his legs, but under a continuation by Gillespie and finally himself faint from loss of blood, fired a second shot into his left chest. This proved to be fatal.

Foster was later charged and found guilty of manslaughter. He was sentenced to one month's imprisonment.

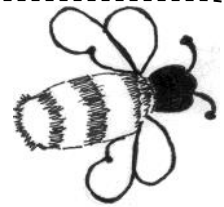
The boy who accompanied the men was a witness at the trial. He said he was sent to Gretna by his mother and that the whisky was in bladders which he collected at his father's house in Wigton, and that he took these to Gretna to be filled with whisky and brought over to England in the boat. His father was at that time in Carlisle goal.

Although the Judge rejected the question when put it was clear Gillespie was there for the smuggling”.

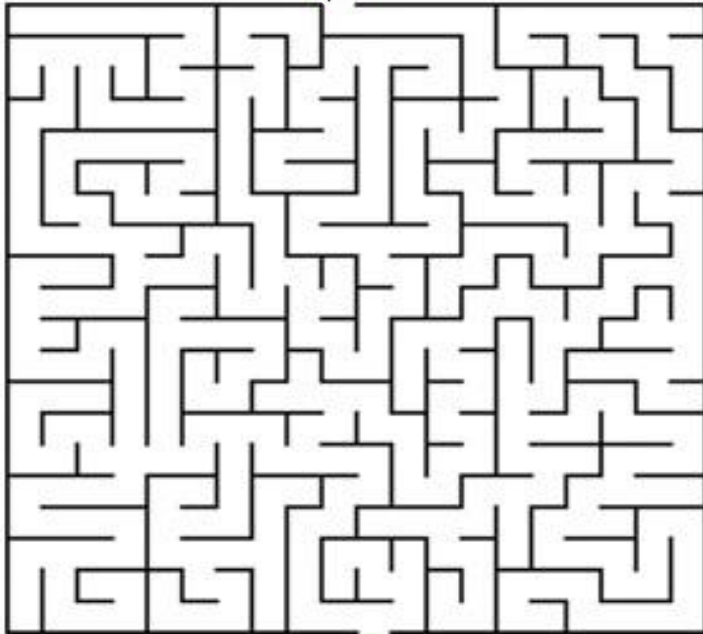
Mr Richardson relates a few more stories about the Rockcliffe smugglers. In some of these, firearms, kitchen tongs, and even wives, were used to resist arrest! It must have been difficult to recruit reliable Excisemen, particularly with what appears to be a perverse decision of the jury.



Eden and Lyne Buzz



Help Bizy the Bee
get to the flower



RaisingOurKids.com

Spring Word Search

I	T	U	O	R	P	S	J	C	U	F	S
S	V	K	C	S	O	N	W	B	Y	C	Q
A	B	S	I	P	F	E	P	R	L	C	H
O	M	O	O	L	B	D	K	U	F	X	S
C	C	C	P	A	B	R	K	J	R	K	P
G	O	Q	J	N	D	A	C	N	E	V	R
W	U	U	I	T	P	G	F	O	T	S	I
P	P	P	B	S	F	S	A	W	T	D	N
S	F	U	L	F	E	L	R	D	U	E	G
H	O	X	X	Y	N	I	O	K	B	E	T
Y	L	I	A	A	I	N	Z	W	S	S	X
E	I	M	L	G	H	B	I	E	E	W	C
K	R	Y	Z	R	S	U	T	A	P	R	H
U	P	A	P	O	N	D	N	J	R	N	S
R	A	X	N	W	U	L	Z	P	W	O	D
Z	N	E	I	L	S	E	L	A	P	U	Y

SPRING
FLOWERS
SUNSHINE
BUTTERFLY
GARDEN

PLANTS
SEEDS
SOIL
GROW
SPROUT

APRIL
MAY
BLOOM
BUD
RAIN



CHILDRENS' POETRY COMPETITION

Compose a poem of no more than 18 lines
containing the words

"Flowers", "Nest" and "Shine"
(In any order).

State your Name and Age and

Email your poem to:

edenandlynebuzz@gmail.com

by 14th May.

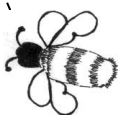
Book Token for the best entry.

Q: Why is the letter A like a flower?

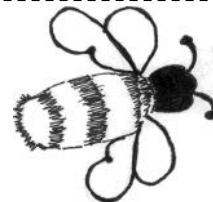
A: A bee (B) comes after it!

Q: When do monkeys fall from the sky?

A: During Ape-ril showers



Eden and Lyne Buzz



LITTLE Accounting Solutions Limited

Need an accountant you can REALLY speak to?

For professional advice in plain speaking, straightforward manner contact
Tracy Little.

Expert Chartered Accountant offering a full range of accountancy and
business services including:

Year end and Management Accounts

Taxation and Planning

VAT / Payroll

Budgeting / Forecasting

Business Strategy / Development

ICAEW
CHARTERED
ACCOUNTANT



ICAEW
CHARTERED
ACCOUNTANT



Contact me for a FREE no obligation discussion on
01228 812408 / 07979 550860 or admin@littleaccountingsolutions.co.uk
www.littleaccountingsolutions.co.uk

Tewthwaite House, Tewthwaite Green, Blackford, Carlisle CA6 4EZ

Professional Dog Clipping and Grooming
Service by Fully Qualified Groomer
Most Breeds Catered for
Hand Stripping of Terrie Flexible Hours

Fiona Carruthers
Beechcroft
Justicetown
Westlinton
Carlisle
CA6 6AH



Tel: 01228674608 / 07801270638
Email: carruthersfiona@hotmail.com

DIANE CLAPPERTON

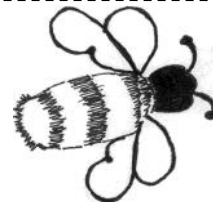
Mobile Hairdresser
Ladies / Gents

26 Woodlands Close
Stanwix
Carlisle

Tel: 01228 380463
Mob: 07526465577



Eden and Lyne Buzz



Don't lose out – share in £155,000 community benefit funding

Is your local group or charitable organisation looking for funding? Are you an individual needing some help with funding for a training course or apprenticeship? Then apply to the BECK BURN WIND FARM COMMUNITY FUND before the deadline 12th May 2017.

Operated by EDF Energy Renewables, The Beck Burn Wind Farm contributes around £155,000 annually for the benefit of the communities of the Cumbrian Parishes of Rockcliffe, Westlinton, Arthuret and Kirkandrews on Esk, along with other Scottish Community Councils.

The community investment fund provides a valuable, long term, flexible and sustainable source of income which can address what is important in your community.

To find out more on fund criteria and eligibility and to download an application form visit: Cumbria Community Foundation's website www.cumbriafoundation.org or contact Nigel Pattison on 01900 825760.

SMALL GRANTS: Both Rockcliffe Parish Council and Westlinton Parish Council will have access to funds each year. Local Residents can apply for small grants up to £1000, directly from their Parish Council representatives: Mrs Judith Twentyman (Rockcliffe PC) or Mrs Dorothea McKay (Westlinton PC) – see Parish Council Page in this magazine for contact details.

ROSS-LYNE BOARDING KENNELS



WESTLINTON, CA6 6AW

TEL: 01228 674530

- SMALL FRIENDLY FAMILY RUN KENNELS ENSURING REGULAR ATTENTION
- SPACIOUS HEATED AND DOUBLE-GLAZED ACCOMMODATION IN A COUNTRY-SIDE LOCATION
- DOGS EXERCISED THREE TIMES DAILY
- OUTDOOR RUNS FOR ADDITIONAL EXERCISE
- UNDER ADULT SUPERVISION ONLY
- DAY CARE OFFERED

PLEASE CONTACT MICHAEL TO BOOK OR DISCUSS ANY SPECIAL REQUIREMENTS

JARED STOREY CHIMNEYSWEEPS Maintenance Services

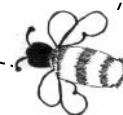
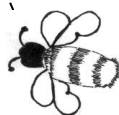


Brian Ross Chimney Sweep

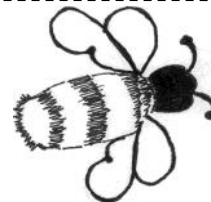
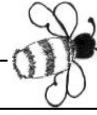
6 Skitby Road, Smithfield,
Carlisle CA6 6AY

**Tel : 01228-675311 Mob: 07720
532769**

Email: bross1764@btinternet.com



Eden and Lyne Buzz



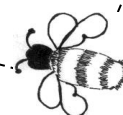
MORE INFORMATION PLEASE

Mr Jim Henderson is undertaking further research on Flight Sergeant T I Ingle of Rockcliffe who died in 1944 and whose death is recorded on the Rockcliffe War Memorial. Is there anyone who could add to the information below or provide a photograph of him? If so please contact Jim on 01228-674484.

Flight Sergeant 1683129 THOMAS DENNIS INGLE 166 Sqn, RAF Volunteer Reserve died age 23 on 28th November 1944. He was the son of Clifford and Ivy Kathleen Ingle, husband of Jessie Ingle of Rockcliffe. He died on a bombing mission over Freiburg Germany on the night of 27th Nov 1944 when his Lancaster was struck by bombs dropped from a plane above them. He is interred with the others of his crew in Durnbach Cemetery in Bad Toelz in a Collective grave. He is also named on his father's gravestone in the churchyard of St John's Church, Roundhay, in Leeds. He had three sisters. Flt Sgt Ingle, Dennis to his wife Jessie and TDI to his friends, had been seeing Jessie Ritchie, a farmer's



daughter of Demesne Farm for some two years when they married in Rockcliffe Church in October 1944. She was then 18.



S H ELECTRICAL
UK Limited
Electrical Contractors

01228 631447

- **General Domestic Installations**
- **Commercial Installations**
- **SKY Digital**
- **Fuseboard Installation and Upgrades**
- **Rewiring**
- **Electrical Inspection and Testing**
- **PAT Testing**
- **Home and Garden Lighting**

No job too large or small

Free quotations on request

24 HOUR CALL OUT

07771 928090

www.shelectricaluk.co.uk



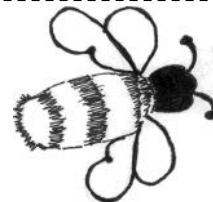
Mark Fraser

• CHIMNEY SWEEP •

For a Friendly Service
Telephone: **07810 023819**
or **(01228) 791617**



Eden and Lyne Buzz



Jean Corrighan

CateringCor

Weddings, Corporate Buffets,
Christenings, Home Entertaining,
Funeral Teas, Cookery Lessons, Parties

Registered with Carlisle City
Council (5* Rated)

9 Newfield Park
Kingstown
CARLISLE
CA3 0AH

Tel: 01228 401183
Mobile: 07762 012439

DO YOU KNOW OF ANY
BUSINESS THAT WOULD
LIKE TO ADVERTISE IN THIS
MAGAZINE?

PLEASE PUT THEM IN
TOUCH AT

edenandlynebuzz@gmail.com



Garden Maintenance Odd Job Man.

Grass and hedge cutting,
tree felling and trimming,
pressure washing, wood
preserving for fences and
sheds.

Free estimates.

**Tel: John on 01228674537
or 07752466713.**

ROUTLEDGE STONEWORK

Martin Routledge

07778418548

routledgestonework@gmail.com

- Traditional dry stone walling
- Bespoke projects

- Stone facing
- Garden features
- All other projects considered

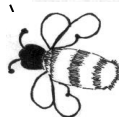
Birdies Gardens

Lowry Hill Call Andy for Free friendly estimates

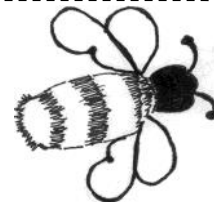
Grass mowing

Hedge cutting General garden tidy Pressure
washing

Mobile - 07794509530 Tel - 01228318809



Eden and Lyne Buzz



The Little School with a Big Heart

Outdoor Gym equipment

When our school council joined in a CSP (Carlisle Schools' Partnership) event at the city council chambers

entitled 'How would we make Carlisle an even healthier city?', one of the items our council mentioned was having outdoor gym equipment in the city's parks.

When we then found out about the availability of this equipment for children, we had to find a means to fund it and that's where the Big Lottery fund came in. We applied for and were awarded a grant of £10,000 from the Big Lottery Fund. We funded the balance from our sports' funding and added the sub-surface so it could be used all year round. The equipment was supplied by Tyre Parks, Playground Projects.

We wanted the equipment in order to enhance the children's fitness and activity levels and encourage a life-long interest in health and well-being. We also open our grounds for use by the community outside of school hours and so it will benefit more than just the children who come here.

It's allowing the children to experience a different way to exercise and have fun and, as some pieces require 2 people to use them, it encourages co-operation and team work. As it is available all the

time, it means there are more choices of activity at playtimes.

Use of school grounds by the community

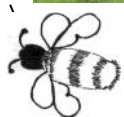
The local community are welcome to use our field, playground,



climbing frame and outdoor gym equipment after 4.30pm Mon-Fri, at weekends and during school holidays. We ask that the area inside the blue railings is kept for use by school and that the grounds are left as they are found. All use is at own risk. Access is through the pedestrian gate at the front of the school.



BLACKFORD C OF E PRIMARY
SCHOOL CARLISLE CA6 4ES
Headteacher:
Mrs. L. Smith
Telephone No./Fax No. 01228
674614
Email address:
head@blackford.cumbria.sch.uk
Web site:
www.blackford-school.co.uk





The Rockcliffe Centre

Here at the Rockcliffe Centre we have a wide variety of activities which are available both during the day and on an evening, if you think you may like to join any please get in touch with the person who is in charge of the particular activity you are interested in.

Mondays

Indoor Bowls 2pm - 4pm contact **Ann Hay on 01228 674363**

1st Rockcliffe Rainbows 5.30pm - 6.30pm contact **Vicky Armstrong on 07495278327**

Karate 6pm - 7pm contact **Alistair on 07557029712**

Tuesdays

Tuesday Club (alternate Tuesdays) 1.30pm - 4pm contact **Ann Hay on 01228 674363**

Beginners Dancing 6.30pm - 9.30pm contact **Kath Hunter on 01228 528166**

Yoga Flow 7pm - 8pm contact **Dawn Whittington on 07850076059**

Thursdays

Dog Obedience Classes 11am - Noon contact **Sheila Hind on**

Fridays

Whist (2nd Friday of each month) 7.30pm - 10pm contact **Hazel Graham on 01228 674372**

April Whist will be held on 21st instead of 14th due to it falling on Good Friday.

If you run or know someone who runs an activity and you think the Rockcliffe Centre is a good venue to hold it then please contact **Nicola Johnston on 01228 672116** to see what days and times are available.

The Rockcliffe Centre

The centre is equipped with everything you could want for your event, wedding, party or show. We have 2 rooms, of different sizes, so you can pick and choose how much of the centre you need. We also have an excellent kitchen, and if required a bar.

So if your looking for a venue for a wedding, funeral, birthday party or a sports day get in touch and get an excellent value for money quote from The Rockcliffe Centre.

Hire Charges

Small Hall that seats approx 60 People – £8 per Hour – £10 per Hour with Kitchen

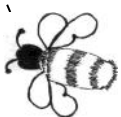
And the Main Hall that seats approx 150 People – £10 per Hour – £15 per Hour with Kitchen

Small functions like christenings etc which require the bar will be charged and extra £10 per hour.

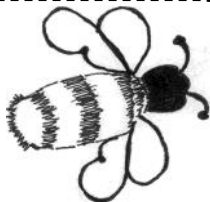
For hire of the whole centre £150 + £50 refundable deposit.

Wedding Packages

The centre also has various wedding packages available, for further information please contact Nicola Johnston on 01228 672116



Eden and Lyne Buzz



SEAN LEIGHTON DOMESTIC APPLIANCE REPAIRS

Tel 01228 674422
Mob 07889060626

Sean Leighton Domestic Appliance Repairs stock a range of washing machine spares and electrical appliance parts for a quick fix.

It's doesn't matter if you have a free standing or built in washing machine, cooker or tumble dryer I can repair them all.

For a comprehensive service, including plumbing repairs, electrical repairs and mechanical repairs in Carlisle and the surrounding areas, contact Sean Leighton Appliance Repairs.

Repair services

Repair available to any make of model of these appliances:

- Cooker, hob, oven repair
- Dishwasher repair
- Freezer repair
- Fridge repair
- Microwave repair
- Tumble dryer repair
- Vacuum cleaner repair
- Washing machine repair

If you have something not on the list please give me a call and I will do my best to facilitate your requirement.

Cumbria County Council



ROCKCLIFFE

CARGO

CARLISLE

Village Wheels
to Carlisle

Effective from
1 April
2016

Depart:

Tuesday and Friday	Single fare to Carlisle
Rockcliffe School	10:30 £1.25
Cargo Bus Shelter	10:36 £1.00
Arrival: Carlisle*	10:50
Return: Carlisle*	13:30

*Drop off and pick up point to be agreed by passenger demand on the day

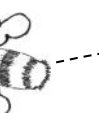
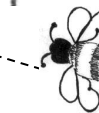
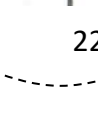
Phone **01228 221055** to get your Smartcard.
See overleaf for more details.

Serving the people of Cumbria

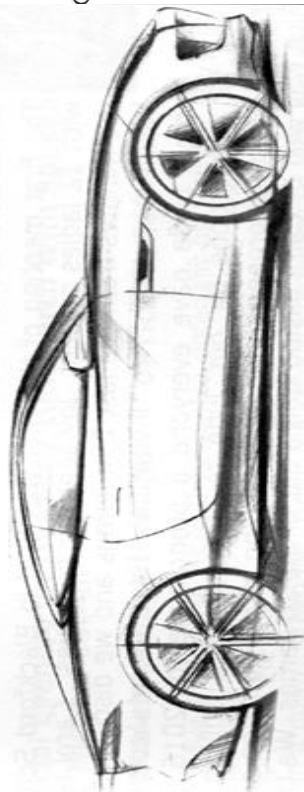
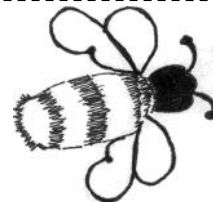
cumbria.gov.uk

You need to register first and then book by phoning 01228-226430 by noon the day before you wish to travel to book your seat. As this is NOT a registered bus service passengers are unable to use concessionary Bus Passes.

PLEASE – Use it, or lose it



Eden and Lyne Buzz



Broadway Auto Repairs

Servicing - Repairs - MOT Preparation
Clutches - brakes - Exhausts - Batteries ETC



Opening Hours

Monday - Friday 8.30 - 5.30

Saturday 8.30 - 12.30

Unit 4 Site 7

9 Kingstown Broadway

Carlisle

CA3 0HA

All Makes & Models

Friendly - Honest - Reliable

TEL: 01228 593322



Welcome
back

Community Health Mela returns to

Carlisle City Centre

13th May 2017

A Community Health Fair

10am to 4pm

- Free health checks
- Personal & confidential health advice
- Information and advice on health issues
- Personal wellbeing advice and support
- Complementary Therapies
- Healthy Eating and Cooking
- Something for all ages
- Entertainment
- Opportunities for exercise



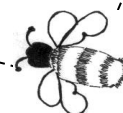
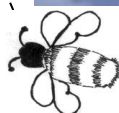
Supported by;

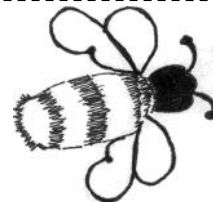
CARLISLE
CITY COUNCIL



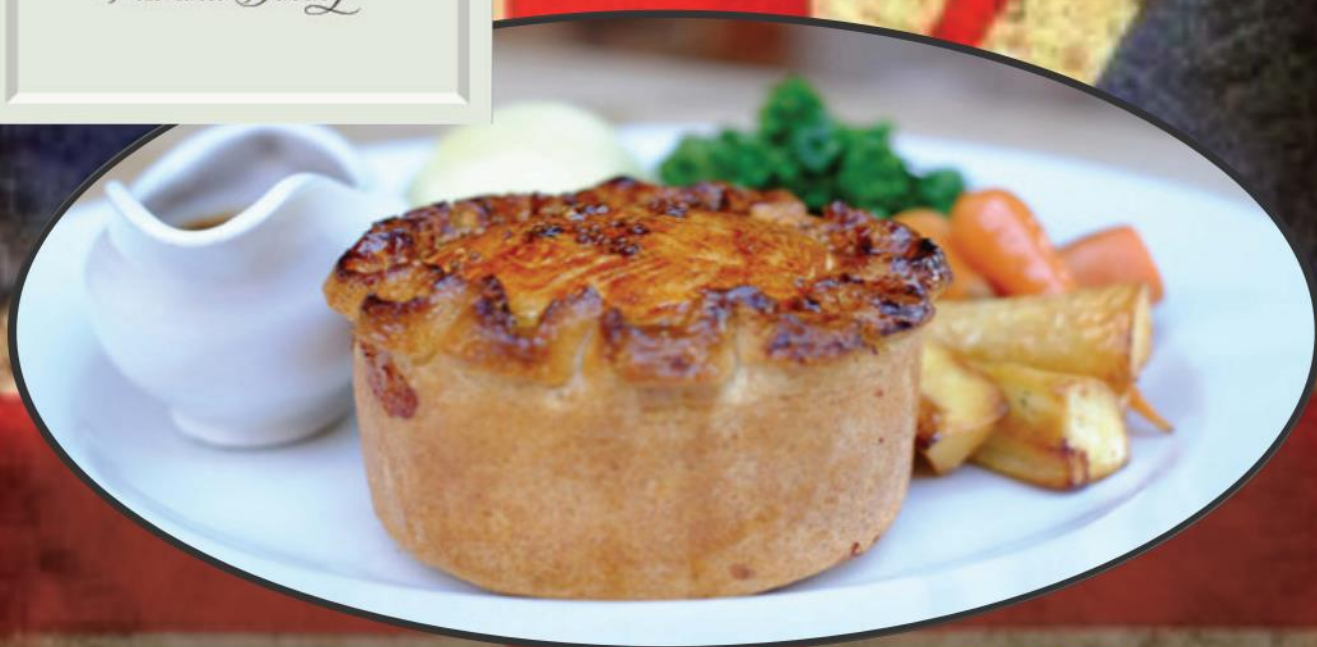
Contact: Tel. 01228 535957

Email, rotary@dagonservices.co.uk





A GREAT BRITISH TRADITION



PIE NIGHT £7
EVERY WEDNESDAY

BOOK NOW
FOR EASTER

01228 674545

