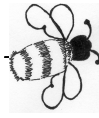


Eden and Lyne Buzz

August / September 2017



*FOR THE COMMUNITIES OF ROCKCLIFFE, CARGO, HARKER,
BLACKFORD, WESTLINTON AND ALL POINTS IN BETWEEN*



**KINGSTOWN, THE KAISER, THE AIRMAN,
THE MILES MAGISTER AND THE PRINCE
FULL STORY ON PAGE 13**



PRINCE FRIEDRICH

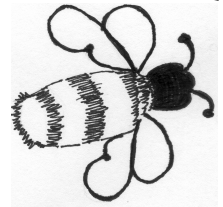
**Blank
cheque
clue to
'lost' prince**

This edition is sponsored by

The Cumberland



Eden and Lyne Buzz



Cream Tea

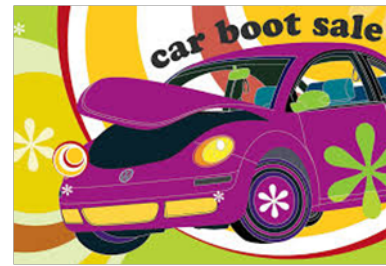
**Sunday 3rd September
At the Rockcliffe Centre**

3 to 5pm

Cake Stall and Raffle

£4

ALL WELCOME



CAR BOOT SALE

August Bank Holiday

Monday 28th August

St Augustine's Church Grounds

Car Boots from 7am – Gates open at 8am

TO BOOK AND FOR FURTHER DETAILS

CALL MICHAEL ON 07796-102996



**SUMMER BREAK
Coffee Mornings
will resume in the**

Crown and Thistle

On Thursday 5th October

All Welcome

BLACKFORD PCC

Harvest Festival



In Blackford School

Sunday 24th September 12 noon

Tickets £10 Children £5 Available from:

Joan Bell 07810730093 Joan Forrester 792775

Barbara Murray 674382

**Come along and see the wonderful flower
arrangements in the Church—Then come and enjoy
a delicious 2 course lunch in the School. Space
limited, don't be disappointed, order your ticket early.**

Please bring Plate, Dessert Bowl and Cutlery



LYNEFOOT KENNELS

<http://lynefootkennelsltd.co.uk>

Established in 2009 Lynefoot Kennels is a family run business. With help from a small, dedicated team, we want you to leave your dog knowing that they will receive our personal care and attention at all times.

"Lynefoot is a friendly, family-run kennel with high standards of cleanliness and care . . . Extremely roomy indoor kennels with an outside bit . . . An exercise pen which David and his family make sure all dogs get use of throughout the day . Twice daily walks in lovely fields . . . It is reassuring to know that they make regular checks on vacs and health updates"

Address: Lynefoot Kennels,

Lynefoot Farm, Carlisle, CA6 6AJ

Telephone: [01228 674 376](tel:01228674376)

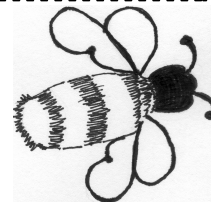
Email: fiona@lynefootfarm.plus.com

This edition is sponsored by

The Cumberland



Eden and Lyne Buzz



IN THIS EDITION

Cover Photos— Full Story on Page 13
Page 3 - Advertisers, Copy Date. What's On
Page 2— Local Events
Page 4—Sudoku Puzzle
Page 5— Editorial
Page 6—Important Announcement
Page 7— Rockcliffe, Blackford and
St Augustine's Church Services
Page 8—Children's Page
Page 9—Superfast Broadband in Cumbria
Page 11— Blackford WI and PCC News and Events
Page 12— Safety in the Summer Sun
Page 13 — A Local Story from 1942
Page 15— Rockcliffe and Westlinton Parish Councils
Page 16 — Kingmoor Parish Council Annual Report
Page 17—From the Vicarage
Page 18— Rockcliffe Tuesday Club
Page 19—Village Wheels Timetable
20 —Sudoku Puzzle
Page 21—Parish Registers, Cricket Club and Bowls Club
Page 22—Constitution, Disclaimer, About the Garden
and Sudoku Solution.

WHAT'S ON - FUTURE EVENTS

AUGUST

Saturday 12th August—Dalston Show

**Monday 28th August – BH Car Boot Sale at St
Augustines- Page 2**

SEPTEMBER

Sunday 3rd —Cream Teas, Rockcliffe—Page 2

Friday 22nd—Elvis Tribute Night—Page 10

Sunday 24th - Blackford Harvest Festival and Lunch Pg 2

**Monday 25th th Harvest Supper and auction of
produce and flowers in Blackford School at 7pm**

LOOKING AHEAD

1st Oct – Rockcliffe Harvest Festival and Supper

11th Oct— Superfast Broadband Workshop -Page 9

28th Oct to 11th Nov – Poppy Appeal

1st Nov —Blackford Christmas Flower Show

4th Nov – Fireshow in Bitts Park

12th Nov – Remembrance Sunday

26th Nov – Rockcliffe Christmas Fair

TO ADD TO THIS LIST SEND DETAILS TO

edenandlynebuzz@gmail.com

LIST OF ADVERTISED SERVICES

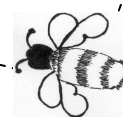
Accountants—Page 14 and 19
Air Cadets—Page 20
Boiler Servicing, Repairs and Installation—Page 14
Building Society/Bank—Page 23
Car Boot Sale—Page 2
Catering—Page 18
Chimney Sweeps—Pages 10 and 18
Chiropodist—Page 6
Coffee Mornings—Page 2
Computer Supplies and repairs etc—Page 6
Domestic Appliances Repairs and Sales —Page 4
Electrical Repairs etc— Page 14
Firewood/Logs—Page 19
Food Bank—Page 10
Funeral Directors —Page 14 and 18
Garden Centre—Page 4
Garden Maintenance—Page 6
Hair Dresser (Mobile) Page 19
Indoor Bowls—Page 21
Kennels—Page 2
Kirklington Hall—Page 21
Legal Advice—Page 9
Milk and Newspaper Deliveries—Page 4
Plumber—Page 20
Poppy Appeal (Volunteers) - Page 9
Public House—Page 24
Rockcliffe Centre—Page 9
Rotary Club—Page 20
Sheds and Fences etc—Page 23
Tax/Wills advice—Page 10
Tree Feller—Page 18
Tuesday Club—Page 18
Vehicle Repairs—Page 19
Window Cleaning etc—Page 6
Village Wheels—Page 19

NEXT COPY DATE

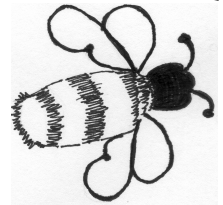
The Eden and Lyne Buzz will be produced 6
times a year at the start of the even months
Feb, Apr, Jun, Aug, Oct and Dec.

Material can be sent at anytime to
edenandlynebuzz@gmail.com

**The final date for material for the
Oct/Nov Edition is
FRIDAY 22nd September 2017**



Eden and Lyne Buzz



MILK & PAPER DELIVERY

Daily & Sunday Newspapers

Magazines & Periodicals

All Dairy Products

delivered to your doorstep

Ring or Text:

Mobile: 07932 965 618

Dog Fouling

Wherever you walk you see many instances of it. Some are under the impression that as long as it is out of the village it is OK not to pick it up. This not the case. It is an offence not to pick it up anywhere and dispose of it in a bin.

Dog faeces is not only extremely unpleasant if stood in, it can cause blindness in children and illness in cattle. It has become so bad that we have asked the City Council to inform the dog warden to monitor areas that are affected and any offenders will be issued with a fine.

SUDOKU

Solution on page 22

5		1	6			8		
	9			1			2	5
			2					
					7			
	8						6	
			4			1		
8		7			9	4		
	5	6						
				2				7

S H ELECTRICAL

UK Limited

Electrical Contractors

- Domestic & commercial electrical installations
- Electrical testing & rectification work
- Smoke, heat & carbon detector installations
- Security lighting & alarm systems
- Electric shower installations
- Fan and ventilation system installations
- Landlord maintenance services
- TV & aerial installations
- Solar PV

No job too large or small
Free quotations on request



24 HOUR CALL OUT
07771 928090

Unit 10, Long Island Park, Carlisle, Cumbria CA2 5AS
Telephone: (01228) 631447

www.shelectricaluk.co.uk

Aero Nurseries

Garden & Aquatic Centre



Harker Rd Ends, Carlisle, Cumbria, CA6 4HQ
01228-674 612

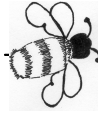
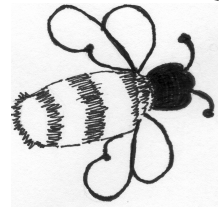
Between ASDA and Rockcliffe

Aero Nurseries is a traditional garden nursery with an aquatic department. Come for a visit and find in stock, Bedding and Basket plants, vegetable and herb plants, shrubs and trees, conifers, Heathers, alpine's and herbaceous plants.

We have a good range of Stoneware and pots, and stock Humax and Bord Na Mona composts. Our aquatic department has everything for your pond including fish, water plants, food, treatments, pumps and filters.

We are open Mon-Sat 9am-5pm Sun 10am-4pm.

Eden and Lyne Buzz



Editorial

This edition is sponsored by

The Cumberland

The printing of this edition has been kindly paid with a grant from the Cumberland Building Society's Community Fund. On behalf of us all, the Trustees thank the CBS for their support and hope that our readers will respond to the various messages placed throughout this edition.

We would also like to thank Paul Tiffany and the members of the Richmond Fellowship "Print Room" for their work in launching the two previous editions of the Eden and Lyne Buzz. Sadly, the management of the Fellowship has decided to close the Print Room and Paul has had to find alternative employment. We wish him well. We have had to find a new company to print this edition and we hope that the quality and format will be maintained.

Despite various pleas for assistance, there still remains the task of laying out the magazine; we might have a solution, but if any reader knows of someone with a bit of spare time and access to publishing software, a job awaits!!!

CONTINUING THE SUBJECT OF COMMUNITY, my research had led me to Robert Nisbet who wrote in the 1950's about the effects of nineteenth-century individualism on modern humans in his book *The Quest for Community* - "Of all symptoms of the impact of power upon human personality in the contemporary Western world, the most revealing seems to be *"the preoccupation...with community"* (emphasis added).

Community is the catchphrase of our day, a rallying point for people with wildly varying backgrounds and who agree on very little besides its importance. Without bothering to define *community*, everybody agrees that we all want it—so long as we do not have to give up the apparent freedom that comes with individualism and independence. So, can we have both community and individualism?

Take the recent tower block tragedy in London as an example. Some 120 different households living together on 24 floors, possibly only knowing the neighbours on the same floor – if that. Suddenly, disaster strikes and equally quickly, they are a community working for each other to resolve the issues they are all encountering.

Similarly, when our own floods occurred back in 2015.

Community is holding things—creative property, moral standards, liturgical traditions—in common, a holding that entails, in fact necessitates, the sacrifice of our personal inclinations. The contemporary interest in community is a reactionary impulse, pushing against the nineteenth century claim that each of us is ultimately alone in the universe.

The problem in a nutshell is this: The modern soul consists of two contradictory impulses, an ache for community and an obsession with self-definition. Our attempt to have community without dealing with this contradiction diagnoses a symptom but ignores the disease. We recognize that we are alone and that we are in existential dread. But we confuse the causality; we believe that by surrounding ourselves with people, all of whom individually experience this existential dread, we will overcome it. We do not recognize that we are alone because of our fear of neighbourliness, which is an indication of something much more profound than social isolation.

So, let's apply this to our local surroundings. We have a group of well established residents in our villages who have broken away from individualism over the years and developed a "local community" of Church, Parish Councils, Community Centres, the Pub, Sports Groups and so on, all committed to try to sustain "the community" ideal for as long as possible. We then have the new arrivals within the villages and in the new developments who treasure their individualism and isolation within the bosom of their home and families.

The conundrum is – how will we collectively establish and sustain the "Community" for the future? Do we need another disastrous event to make it happen?

This edition includes a plea for someone to take over the organisation of fund raising events for the Rockcliffe Church and another plea for someone to re-establish the Indoor Carpet Bowls Club. An advertisement for Karate Classes has been deleted because no one in the local villages attends. Soon it could be the Rockcliffe Centre or even the Rockcliffe Church that run into the buffers.

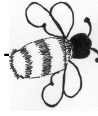
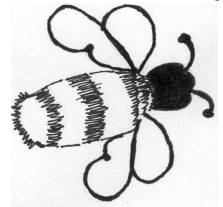
Who will be the first to complain?

Not those who have tried to keep things going!!

Most importantly – does anyone care?



Eden and Lyne Buzz



BIRDIES GARDENS

Lowry Hill

**Call Andy for free
friendly estimates.**

Grass Mowing, Hedge Cutting
Pressure washing,
General Garden Tidy
Mobile: 07794-509530
Tel: 01228-318809

NM WINDOWS LTD

Window Cleaning, fascias and gutters.
Free quotes for regular
or one-off service.
Commercial or domestic work.
Water-fed pole system.
n.m.windows@live.co.uk



facebook

07787 860 217

gemsoft
COMPUTERS

**COMPUTER SALES, UPGRADES,
INSTALLATION, NETWORKING,
FAULT FINDING AND REPAIRS**
**Count on us to deliver a first class
local service at one of the lowest prices.**
CONTACT ANDREW MEGGS ON
Tel: 01228 547444 or 07785 743574
Email: mail@gemsoftcomputers.co.uk

This edition is sponsored by

The Cumberland

St Mary's Church – Fund raising IMPORTANT ANNOUNCEMENT

As many of you know, I have been the organiser of raising funds for St Mary's Church, Rockcliffe with Cargo for 40 years and need to retire completely now. I did try to retire five years ago but have been needed to help out at nearly every event. I am sure that within our villages of Rockcliffe and Cargo plus Crindledyke there must be someone who could take over this work. To keep Rockcliffe Church available for Christenings, Weddings and Funerals as well as normal services requires the community to contribute; our 8 or so events within the year help to keep our lovely church open for everyone who needs it. We have had, and still have, a wonderful band of helpers to call upon for all the events and we just need someone to lead and co-ordinate them. I lived in Rockcliffe from birth until I married at the age of 23. My family moved back to the village 41 years ago and we have really enjoyed being part of the community.

I now need to slow down.

PLEASE get in touch with me on 01228 674363 or our vicar, The Revd. Jan van den Berg on 01228 674209.

Foot Action Saves Time

Douglas Morrison

Chiropodist Podiatrist

D.Pod M. M.Ch.S. HCPC Registered

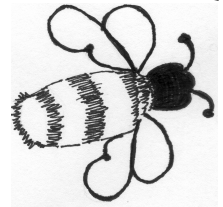
douglas.morrison@footactionsavestime.co.uk

Telephone: 07933 493281

www.footactionsavestime.co.uk



Eden and Lyne Buzz



CHURCH SERVICE TIMES



ROCKCLIFFE CHURCH SERVICES **AUGUST/SEPTEMBER 2017**

AUGUST

- 6th 9.30a.m. Holy Communion
Guest Speaker: Revd. Mike Talbot
- 13th 9.30 am. Morning Prayer
- 20th 9.30 am. Holy Communion
- 27th 11.00 am Holy Baptism

SEPTEMBER

- 3rd 9.30am Holy Communion
- 10th 9.30am Morning Prayer
- 17th 9.30am Holy Communion
- 24th 9.30am Family Service

OCTOBER

- 1st 9.30am. Harvest Celebration
6.00pm Harvest Supper and sale in
Rockcliffe Centre



BLACKFORD CHURCH SERVICES **AUGUST/SEPTEMBER 2017**

AUGUST

- 6th 11.00am Holy Communion
Guest Speaker: Revd. Mike Talbot
- 13th 11.00am Holy Communion
- 20th 11.00am Family Service
- 27th 10.00am Morning Prayer

SEPTEMBER

- 3rd 11.00 am Holy Communion
- 10th 11.00am Holy Communion
- 17th 11.00am Family Service
- 24th 11.00am Harvest Celebration followed by
Harvest Lunch in school—Details on Page 4

OCTOBER

- 1st 11.00am Holy Communion

PARISH OF ST AUGUSTINE OF HIPPO

MASS TIMES

Weekends: Saturday - Vigil Mass at 6.30pm
Sunday – 10.30am
Holydays of Obligation
Vigil Mass at 7.30pm and at 9am on the Feast Day

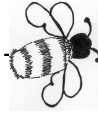
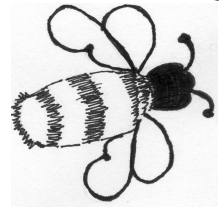
Weekdays:

9am – Monday, Thursday and Friday
7.30pm – Wednesday
10am – Saturday
**Benediction – First Sunday of the Month in
Ordinary Time.**



Parish Priest – Father Geoffrey Steel
01228-526765
10 Waverley Road, Carlisle CA3 9JU

Eden and Lyne Buzz



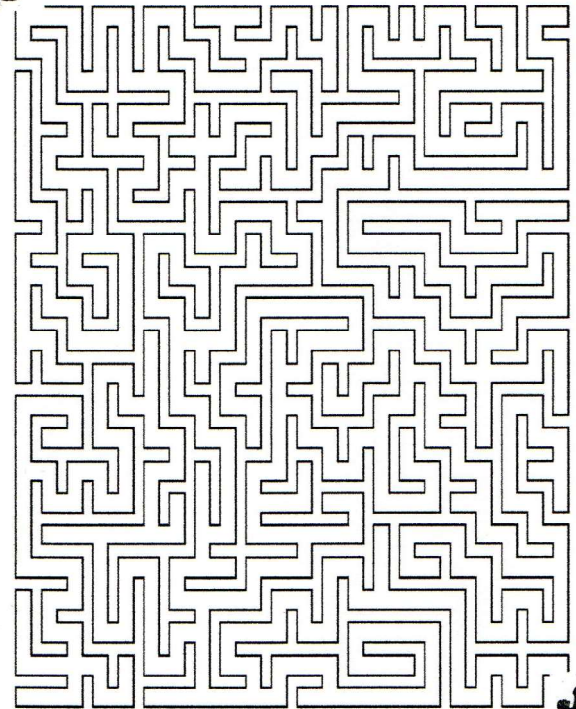
CHILDREN'S PAGE



WEATHER



Help the King get back to the castle



Printed from busybeekidsprintables.com

R F Y D R I Z Z L E R D C V S
E M W Y B R C E X W Z D F U U
D O I L A W C X F V B H O K N
N R N Y D G Y L B G F T G E S
U C D S X E R U O P A S E D H
H A W R T M N J U U K M N B I
T J I K O R P M N B D C E W N
X Q A Z B O M J Y H G S F R E
A L I G H T N I N G T Y H U L
F M T X W S L P D X Z E R T L
Q D M X T H I T W T R D W V P
Z V N J R D Q S G K J O B G F
C M I S T P U O F C N E S X Z
B G T R F C D R W S X Z A Q W
M L P I U G F F W S A H A I L

SUNSHINE

SNOW

WIND

CLOUDS

MIST

LIGHTNING

DRIZZLE

HAIL

FROST

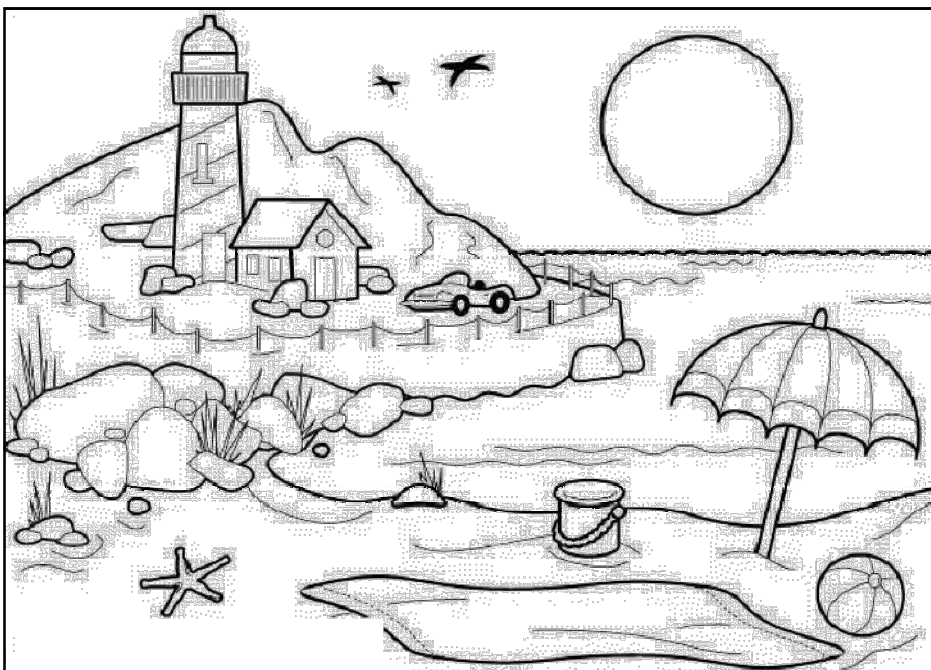
FOG

THUNDER

STORM

PRIZE Children's Poetry Competition for the Under 18s.

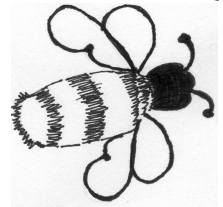
Write a poem no longer than 18 lines about your holiday. A £5 Book Token for the for the best entry received by 20th September. Email to edenandlynebuzz@gmail.com



KNOCK KNOCK JOKES

Knock Knock Who's there?
Harold! Harold who?
Harold do you think am!
Knock Knock Who's there?
Hannah! Hannah who?
Hannah partridge in a pear tree!
Knock Knock Who's there?
Harriet! Harriet who?
Harriet it up!
Knock Knock
Who's there? Holly!
Holly who? Hollylujah!

Eden and Lyne Buzz



This edition is sponsored by

The Cumberland

Specialist wills, tax & probate solicitor

One of the few true specialists with over 25 yrs experience & additional specialist qualifications - large city firm experience without the high prices - has saved millions of £'s Inheritance Tax.

Lynn Emery LLB(Hons) Solicitor (TEP)

Tel: 016974 78303

Mob: 07901 229218

Email: LynnAEmery@aol.com



POPPY APPEAL VOLUNTEERS REQUIRED

The Poppy Appeal runs from 28th October until to 11th November this year.

Collectors are required at ASDA, Morrison's and ALDI, north of the City and elsewhere throughout the 2 weeks.

If you are willing to spend 2 or 3 hours whilst out shopping, or at any other time, please contact or leave a message for Colin or Margaret Wadsworth on 01228-537304

The Rockcliffe Centre

The centre is equipped with everything you could want for your event, wedding, party or show. We have 2 rooms, of different sizes, so you can pick and choose how much of the centre you need. We also have an excellent kitchen, and if required a bar.

So if your looking for a venue for a wedding, funeral, birthday party or a sports day get in touch and get an excellent value for money quote from The Rockcliffe Centre.

Hire Charges

Small Hall that seats approx 60 People – £8 per Hour – £10 per Hour with Kitchen

And the Main Hall that seats approx 150 People – £10 per Hour – £15 per Hour with Kitchen

Small functions like christenings etc which require the bar will be charged and extra £10 per hour.

For hire of the whole centre £150 + £50 refundable deposit.

Wedding Packages

The centre also has various wedding packages available, for further information please contact Nicola Johnston on 01228 672116

Here at the Rockcliffe Centre we have a wide variety of activities which are available both during the day and on an evening, if you think you may like to join any please get in touch with the person who is in charge of the particular activity you are interested in.

Mondays

1st Rockcliffe Rainbows 5.30pm - 6.30pm contact **Vicky Armstrong on 07495278327**

Karate 6pm - 7pm contact **Alistair on 07557029712**

Tuesdays

Tuesday Club (alternate Tuesdays) 1.30pm - 4pm contact **Ann Hay on 01228 674363**

Beginners Dancing 6.30pm - 9.30pm contact **Kath Hunter on 01228 528166**

Yoga Flow 7pm - 8pm contact **Dawn Whittington on 07850076059**

Thursdays

Dog Obedience Classes 11am - Noon contact **Sheila Hind on**

Fridays

Whist (2nd Friday of each month) 7.30pm - 10pm contact **Hazel Graham on 01228 674372**

April Whist will be held on 21st instead of 14th due to it falling on Good Friday.

If you run or know someone who runs an activity and you think the Rockcliffe Centre is a good venue to hold it then please contact **Nicola Johnston on 01228 672116** to see what days and times are available.

Superfast Broadband in Cumbria

Connecting Cumbria is running a Digital Inclusion programme to make people aware how better internet access can help deliver real economic, business and social benefits. This is getting more important as economic and demographic trends across Cumbria are not optimistic and raise significant challenges for us:

- Cumbria is the only region in the UK where the population is forecast to decline over the next 20 years.
- 28% of the working population in Carlisle is earning just the living wage (or less).
- Working Population is declining (by 11% over the next 20 years).
- More people under 30 are leaving Cumbria than staying.
- We are getting older and need more support- the number of people 65+ will increase by nearly 50% and half of people over 65 have a disability or special healthcare needs.

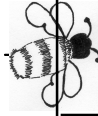
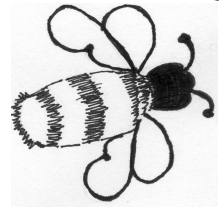
Rockcliffe Parish Council and Connecting Cumbria are organising a Digital Inclusion event, so that people and business in our community are aware of what's happening with superfast availability, how to get the best deals and the real benefits of the internet.

The workshop in the Rockcliffe Centre is on Wednesday 11th October at 7.00 p.m. To book a place (or ask any questions) contact

info@connectingcumbria.org.uk, or just turn up on the night. Look out for posters and postcards with more information



Eden and Lyne Buzz



Mark Fraser

Chimney Sweep
For a Friendly Service



CONTACT

07810 023819

Or

01228 791617



**STAMPS REQUIRED FOR EDEN VALLEY
AND JIGSAW CHILDREN'S
HOSPICES.**

**YOUR USED POSTAGE STAMPS AND
OLD COLLECTIONS PROVIDE A USEFUL
SOURCE OF INCOME TO THE LOCAL HOSPICES.**

**ANY DONATIONS CAN BE LEFT WITH
THE HOSPICE BOOKSHOP IN LOWTHER STREET,
THE HOSPICE SHOP IN LONSDALE STREET
OR WITH TONY PARRINI
AT HAMETHWAITE, ROCKCLIFFE CA6 4AB**

HABERDASHERY

**Eden Valley Hospice raises funds from Surplus and
unused Silks, Wools, Cottons, Buttons, etc.**

*Items can be delivered to the shop in Lonsdale
Street or ring Anne on 674553 to
arrange local collection.*

Prepare To Be Entertained, Everyone Welcome

ELVIS

Friday 22nd September

**The Rockcliffe
Centre**

*UK's No1 tribute
as Elvis Presley.
NIAL SOUTHALL*

**Includes
Disco**



Doors Open: 7:45pm to Start at 8.00pm

Tickets: £8.00

Contact : Nicola Johnston 07775562170

**PLEASE SUPPORT
OUR ADVERTISERS AND
MENTION**

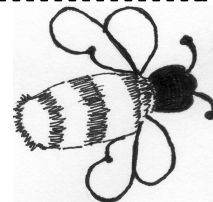
**"Eden and Lyne Buzz"
when you do.**

This edition is sponsored by

The Cumberland



Eden and Lyne Buzz



theWI INSPIRING WOMEN

BLACKFORD W.I.

JUNE: On Monday 12th June we arrived at the School for 6.45 pm in order to set up the tables and chairs and sort out the refreshments. President, Linda, welcomed members and guests

from Hallbankgate, Lowry Hill, Kingstown & Moorville, Houghton and three local ladies. Apologies were received from Mabel.

Our speaker Susan Allen from The Wordsworth Trust had asked to give her talk first, so she commenced with her talk, also showing some slides on the life of William Wordsworth's sister Dorothy who was known to be a person who talked to everyone and she kept fantastic journals. Susan Allen began by reading from some of these journals before telling us of Dorothy's interesting life. Linda gave the vote of thanks for a really interesting talk.

The competition for the hand written, well known Wordsworth poem, 'I Wandered Lonely as a Cloud' was judged and this was won by a lady from Houghton W.I.

We then served refreshments from a table laden with sandwiches and cakes. Whilst this was happening the raffle tickets were being sold. Linda passed around quiz sheets with all the answers parts of the body. We then had the raffle and the prizes were well distributed amongst members and guests.

A vote of thanks was given from the visiting W.I.'s before they left for home at approximately 9.30pm.

JULY: Our July meeting was a week earlier than usual and we met up at 5 pm to arrange transport to Abbeytown.



We arrived shortly before 6 pm and went to the Tea Rooms where we were served a lovely ham salad followed by a trio of sweets. Here we were able to discuss any business, look through the County News and purchase the County raffle tickets.

Our president, Linda, thanked all the ladies for serving a delicious supper.

CONTINUED IN NEXT COLUMN

BLACKFORD WI—Continued

Our guide for the tour of the Abbey was Jean Armstrong and she proceeded to show us around giving us a potted history from when the Abbey was founded in 1150 by Cistercian monks. Only minor repairs were made until the twentieth century when a new oak ceiling was provided by the family of Sir Walter Scott and much repair work and new building was carried out. Then in 2006 the church was severely damaged by arson. Since then a new roof, stone floor with under-floor heating and lots of other renovations have been made.

BLACKFORD PCC

St John's Church, Blackford

Join Blackford PCC for a
TOUCH OF CHRISTMAS
Enjoy food, wine, sparkle and
FLOWERS BY JOHN DALTON
Wednesday 1st November
Blackford Church at 7pm.

Tickets £10 available from:
Grace 674006 Joan 792775
Barbara 674383 Joan 07810730093

Flower Rota 2017

We have very skilled flower arrangers who will be happy to arrange flowers in Church on your behalf. If you would like to supply flowers or ask the flower committee member to buy them on your behalf for a special commemorative day please contact the committee member on the rota to discuss your needs and prices.

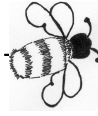
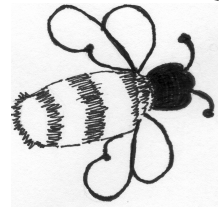
Please contact:

August: Mrs G Carter 674006

September: Joan/Barbara 674382



Eden and Lyne Buzz



SAFETY IN THE SUMMER SUN First of a regular column by GP Dr Quynh



Most people mark the start of the Summer when our children break up from school, so it seemed fitting to share some thoughts about sun safety (as I write this it's raining again!).

As a GP I've been asked on many occasions for sunscreen advice especially for babies and children. Also concerns about new or changing

moles are a common reason that patients of all ages have come in for an appointment.

Although it seems public awareness about sun safety has improved overall, it is still important to remember that more than 100,000 new cases of skin cancer are diagnosed annually in the UK, and extensive sun exposure is thought to be responsible for the vast majority of cases. Overall, in more than 4 out of 5 cases skin cancer is a preventable disease.

In terms of sunscreen, experts recommend using a product that has a minimum SPF ("sun protection factor") of 30, IN ADDITION to protective shade and clothing. The reason that sunscreen alone is not felt to be sufficient is because studies have found that most people apply less than half of the amount required to provide the level of protection indicated on the packaging, and areas such as the back and sides of the neck, temples and ears are commonly missed. A frequently asked question I have received from parents is what to use on babies, as most sunscreens state the product should not be used on children under 6 months of age. Part of the reason is that young babies can easily rub it into their eyes and mouth. Interestingly, a Dermatologist colleague of mine had an opportunity to ask a major sunscreen manufacturer and the reason they gave for not using sunscreen on kids under 6 months is so that parents do everything possible (i.e. limit exposure especially between 10am and 2pm, wear loose clothing with long sleeves and a wide-brimmed hat with back flap for the neck etc) to make sure the baby is not exposed to the sun in the first place and hence should not need it. In children bad sunburns and too much time spent in the sun without skin protection have been linked to a higher risk of skin cancer later in life.

Finally a quick word about vitamin D, as many people know sunlight exposure on our skin is the body's only mechanism for making vitamin D. There is good evidence that vitamin D helps to keep bones healthy, and it has also been suggested that vitamin D may help to prevent serious diseases such as cancer, various forms of arthritis and autoimmune diseases although more research is needed. Despite these potential health benefits, experts do NOT advise that we should sunbathe to increase our vitamin D levels as doing so may increase our risk of skin cancer. So the sensible advice is to get some sunshine as you go about your daily life without getting a heavy tan or burning, and to get vitamin D through your diet. It is currently recommended that everyone over the age of 4 aims to get 400 IU of vitamin D daily between all dietary sources: natural food sources like oily fish; fortified foods (including infant formula milk, some yogurts, margarine and cereals) and supplements.

Please refer to the British Association of Dermatologists' excellent website which is full of information about sun safety and can be accessed from this link: <http://www.bad.org.uk/for-the-public/skin-cancer/sunscreen-fact-sheet#one-application-sunscreen>.

So here's to more warm sunny days in the coming weeks and enjoying it sensibly with friends and family!

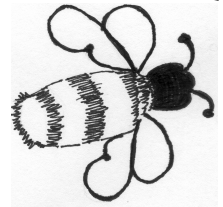
Doctor Quynh

This edition is sponsored by


The Cumberland



Eden and Lyne Buzz



KINGSTOWN, THE KAISER, THE AIRMAN, THE MAGISTER AND THE PRINCE— a local story from 1942

On the morning of 28th January 1942, 20 years old, RAF Leading Aircraftsman James McKenzie Martin Waite, known as “Mac” to his friends, climbed into the rear cockpit of a Miles Magister training aircraft at Carlisle’s Kingstown Airfield. Due to a scarcity of suitable training airfields the RAF had leased the Civil Airfield for training whilst runways built at Crosby on Eden were used by larger aircraft. The instructor, Sgt Bruce Astley, of the Royal Australian Air Force, took the front seat. Young men like James Waite were desperately needed in those dark days of the Second World War. Many skilled pilots had been lost in the previous two years of war. If Britain was to survive, replacements were needed. James McKenzie Martin Waite had volunteered to be one of those. The sortie was a short training flight plan that would take them north west and over the Solway Firth.

The Miles Magister, was a simple monoplane of wooden construction developed in 1937 as a training aircraft for the RAF and the Fleet Air Arm. Powered by a De Havilland Gypsy Major engine, it was designed and built by the Miles Aircraft Company, and had a non-retractable undercarriage. Although very basic the Magister was a useful introduction to flying for future Spitfire and Hurricane pilots.

As James Waite and his instructor were returning to Kingstown, disaster struck and the aircraft lost height. As they approached the wooded area of nearby Castletown House at Rockcliffe the aircraft went into a descending spin and became lodged in the branches of a tree in the woods.

The instructor, in the front seat, was killed outright. James Waite, gravely wounded, was trapped in the wreckage. A farm worker known as George Mansfield, hearing the crash went to investigate. Others soon followed. George Mansfield climbed onto the wrecked aircraft and pulled James to safety. This brave man, probably aware that the plywood and glue airframe could have become a fireball at any moment, commented later that “wire cutters would have been useful”. Leading Aircraftman Waite suffered multiple injuries and spent a year in rehabilitation. Although he continued to serve in the RAF, much of it in India, he never flew again.

James McKenzie Martin Waite, born in the Wirral, went on to become a successful Manchester businessman and Director of three companies. He died on 26th April 1994 at his home in Whitefield, Manchester.

However there is a wider interest to this story. The hero of Castletown, George Mansfield, was not simply a farm labourer. He was a German internee, sent under the terms of the Aliens Act, to work there during the War. It is believed that he had also been put in charge of setting up Prisoner of War Camps in Canada. George Mansfield was actually Prince Frederick of Prussia but had adopted an anglicised name to live in the United Kingdom. He was the grandson of the exiled German Kaiser Wilhelm II and the eldest grandchild of Queen Victoria. The Kaiser’s extended family had fled to Britain from their home in the Netherlands following the rise of Nazism.

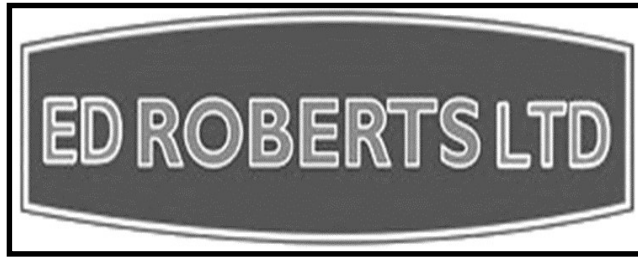
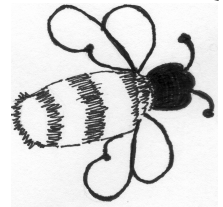
George Mansfield and James Waite became firm friends following visits by the rescuer to James’ hospital bed in Carlisle. James’ mother met ‘George’ after the war and was invited to a function at the Adelphi in Liverpool where she was introduced to George’s wife, the Princess Frederick of Prussia, nee Lady Brigid Guinness, of the brewing family. They had five children. A daughter is the present Princess Antonia of Prussia, the wife of today’s 9th Duke of Wellington.

The story of George Mansfield goes deeper. As Prince Frederick of Prussia he had studied at Cambridge in the late 1930’s. On the outbreak of WW2 he was sent to Canada as an internee. However he was returned to England in 1941 and released for agricultural work. He was sent to Castletown where he was known as ‘George Mansfield’, and proved to be an excellent agriculturalist. After the War he settled in England and took British nationality, still using his adopted name. However legal disputes over his properties in Germany required him to take dual nationality and revert to his original title. In April 1966, following 21 years of marriage, there were further difficulties. Divorce proceedings were pending and the Prince was reported missing when he failed to return from a walk during a visit to relatives in Germany. On April 19th his body was recovered from the River Rhine. He was 54 years old. The verdict was inconclusive.

PICTURES ON THE FRONT COVER: KINGSTOWN AIRFIELD c1942. KAISER WILHELM II. LAC JAMES WAITE. HEADLINE ANNOUNCING DEATH OF PRINCE FREIDRICH (George Mansfield). A MILES MAGISTER AS FLOWN BY 9 ELEMENTARY FLYING SCHOOL FROM KINGSTOWN AIRFIELD.



Eden and Lyne Buzz



www.edrobertsheating-carlisle.co.uk

SPECIALIST OIL-FIRED HEATING ENGINEER

We are a Carlisle based oil-fired engineer company specialising in heating systems, boilers and cookers.

Working across Carlisle and Cumbria,
we offer you a reliable customer focussed service.

Call 01228-522 445 for details

AGA AND RAYBURN SPACE HEATERS SERVICING AND REPAIRS
OIL-FIRED HEATING



B r o d i e

Accountancy and
Tax Services

Martin Brodie - Chartered Accountant

A personal approach to dealing with your
accountancy and tax needs.

Call 01228 818269 or 07912 617868

For a free no obligation quote

www.brodieaccountancy.co.uk



SEAN LEIGHTON
DOMESTIC APPLIANCE REPAIR

☎ 01228 581 655

☎ 01768 877 109

☎ 07889 060626

CONTACT US FOR

Washing machines - repairs & parts
Domestic appliances

Electrical appliances - repairs & parts
Fridge freezer repairs

Microwave ovens - repairs & parts

Tumble dryer and White goods repairs

Cookers, stoves, ovens - repairs & parts

ALL MAKES AND MANUFACTURERS

**SALES OF NEW and SECONDHAND
APPLIANCES**

WEBSITE

<http://www.seanleightoncarlisle.co.uk>

Email: info@seanleightoncarlisle.co.uk

Showroom:

Unit 14, Carlisle Enterprise Centre,
James Street, Carlisle, Cumbria, CA2 5BB



WALKER'S



Katie Walker Funeral Director

24 HOUR COMPLETE SERVICE

PRIVATE CHAPEL OF REST

www.walkersfuneraldirectors.co.uk

walkersfuneral@btconnect.com

80 Wigton Road, Carlisle CA2 7AY

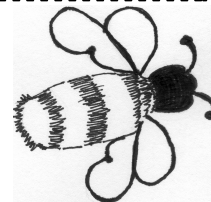
Tel: 01228-515650

This edition is sponsored by

The Cumberland



Eden and Lyne Buzz



ROCKCLIFFE PARISH COUNCIL

Parish Council meetings are held on the third Monday of every odd numbered month (Jan. Mar etc), in the Rockcliffe Community Centre at 7:30 pm.

NEXT MEETING The Annual Parish Meeting is held on the third Monday in May at 7:00 p.m. Members of the public are most welcome to attend the AGM.

Clerk/RFO to the Council

Mrs Andrea McCallum

Rockcliffe Parish Council, c/o 34 Aglionby Street, Carlisle CA1 1JP Tel: 01228 595117

E-Mail: rockcliffepc@carlisle.gov.uk

Parish Councillors

Cllr John Harper (Chairman) - Tel: 01228 674547

E mail: john50jmh@aol.com

Cllr Robert Park (Vice-chair) - Tel: 01228 674217

E mail: rpark@park-gate.co.uk

Cllr Hazel Graham - Tel: 01228 674372

E mail: paul.graham57@btinternet.com

Cllr Maurice Irving - Tel: 01228 595117

E mail: rockcliffepc@carlisle.gov.uk

Cllr Giles Mounsey-Heysham - Tel: 01228 674792 Email:

GMounseyHeysham@savills.com

Cllr S Sidgwick - via Tel: 01228 595117

E mail: rockcliffepc@carlisle.gov.uk

Geoff Moss - Tel: 01228 674327

E mail: gmoss101@aol.com

Gordon Percival Tel: 01228 595117

E mail: rockcliffepc@carlisle.gov.uk

Judith Twentyman - Tel: 01228 674441

E mail: gtwentyman@btinternet.com

COUNTY & CITY COUNCILLORS

County Cllr V Tarbitt - Longtown Division

016977 42247 E mail: val.tarbitt@cumbria.gov.uk

City Cllr J Mallinson - Longtown & Rockcliffe 01228

533746 Email: John.Mallinson@carlisle.gov.uk

City Cllr R Bloxham - Longtown & Rockcliffe 016977 42088

E mail: Ray.Bloxham@carlisle.gov.uk

Meetings Minutes and Agendas etc are available on the website at <http://www.rockcliffeparishcouncil.co.uk>

WESTLINTON PARISH COUNCIL

Contact: Clerk: Mrs D V Mackay –

Tel: 01228 674238

Email: ian_dorothea@hotmail.com

Rockcliffe Parish Council Meeting - 17th July 2017

Public Participation Mr Phil Ruston Broadband Hub Co-ordinator, Connecting Cumbria had been invited to the meeting to give an introduction on their Digital inclusion Project. See separate item regarding a planned Digital Inclusion event in The Rockcliffe Centre on Wednesday 11th October at 7.00pm.

Highways There are many outstanding highway issues due to re-organisation within the Highway Department at Cumbria County Council. Cllr Val Tarbitt agreed to arrange a site meeting to discuss all outstanding items ASAP.

Summer Play Scheme 2017 Play scheme to take place on Wednesday 16th & 30th August 2017. It was agreed that costs for the scheme would be funded from the Beckburn Windfarm Fund. Cllr R Bloxham advised that he would also make a contribution via his ward grant allocation.

Footbridge Replacement Work is due to start on replacement of the bridge in the next few weeks.

Rockcliffe Bridge Cllr Sidgwick reported that the drain outlet had been blocked but was now clear. Highways are aware of the problem. Like most things the more a problem is reported, the more likely it is to be rectified. Due to more cracks appearing in the bridge, the structure and stability is being questioned.

Beckburn Wind Farm Community Fund

It was reported that £5,000 from the Beckburn Wind Farm Community Fund had been paid into the parish council bank account. Two completed grant applications had been received and were considered by the council before it was decided to award a grant of £1,000 from the fund to Rockcliffe School to improve sports facilities at the MUGA and £1,000 to 1st Border Scouts for outdoor activity training that encouraged leadership.

It was suggested that the balance of £426 that was required to fund the Blencarn Park tree seat is also obtained from the fund, as the item is considered to be of community benefit and this was agreed by councillors.

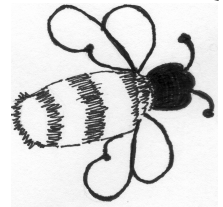
Grant funding is still available for community organisations that operate within the parish and applicants are urged to submit applications for consideration by the council.

HGV Movements-Hespin Wood/Shapwath Councillors were advised that a complaint had been received from a resident of the parish concerning the increased use of minor roads by HGV vehicles. Discussion on the item included that vehicles ignored the 18T weight limit and concerns over the stability of the road bridge. It was agreed to arrange a meeting with Cumbria County Council Highways Department.

CONTINUED ON PAGE 17

Wanted
GOOD QUALITY
LOCAL PHOTOGRAPHS
FOR FUTURE EDITIONS

Eden and Lyne Buzz



www.kingmoorparishcouncil.org

Cllr. Rob Graham, Chairman

Cllr. James Ruddick, Vice Chairman

Cllr. Barry Colville, Cllr. Margaret Dickson,

Cllr. Lesley Faulder, Cllr. Mike Kirkwood,

Cllr. Mick Jones, Cllr. Geoff Wade

Clerk - Sonia Hutchinson Tel: 07989341147 Email: clerk@kingmoorparishcouncil.org

Chairman's report 2017

First of all a quick update from last year. The gasification plant (energy from waste plant) on Kingmoor Park was passed. Although I have heard that the funding might not be available and to date nothing has happened.

On the state of the footpaths after the big flood in December 2015, the 100 yards that was washed out at Stainton has been reinstated and 2 weeks ago 2 men in a van turned up at Cargo with a brush and a shovel – better late than never. However it did take a digger and chainsaw to put it right.

This year most of our attention seems to have been taken up by different cycle ways, one which wants to use the old Waverly Viaduct at Stainton and one that wants to put traffic lights at the bridge at Kingmoor House, we don't agree with either of them.

Taking the one at Stainton first we feel that forcing someone to sell their land for a cycle track through the process of compulsory purchase is wrong. It's not like the new bypass or a major road it's a cycle path. There was no support in Stainton as the residents can remember what it was like before the barriers were put up with motorbikes regularly coming over the viaduct.

Our complaint with the other cycle path is that it would involve reducing the 2 way flow of traffic under the bridge at Kingmoor House, this is on the road from the roundabout into town. On 2 different occasions in the last year there have been traffic lights here and both times traffic has backed up on to the roundabout blocking the bypass. The Parish Council put a consultation paper in the post office and out of 109 people who expressed an opinion 107 thought the traffic lights were a bad idea. That's more than 99% of the local population. Both our City councillors and our County Councillor and local MP Rory Stewart all think that it is a bad idea. Let's hope democracy comes through. I would like to thank County Councillor Trevor Allison for all his help with this project.

One might think that Kingmoor Parish Council are against cycle paths, this is not the case. We, along with Trevor Allison are still trying to find funding for a cycle path from cargo up to the bypass.

On the new Crindledyke Estate there are now about 175 houses being lived in and it is now nearly at the end of Phase 1. Before Phase 2 can begin there will have to be some major infrastructure changes including moving electric pylons. Last year we were trying to raise funding for some kind of traffic calming on Crindledyke Lane. We were unable to find any funding so we are going to finance the project ourselves. We are looking at some kind of solar powered flashing warning sign to go between the new estate and old Crindledyke.

At Cargo we have had to take the swings down on the park but I am assured they will be back shortly we also had a kind donation of a bench and this is now sitting in the park.

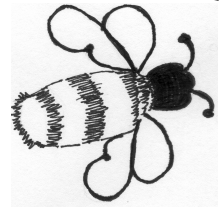
On the planning front we have had applications for new houses, barn conversions, house extensions and even a new Mercedes Garage. All have been looked at and commented on. We have also been involved with issues including road safety, pot holes, dog fouling, footpaths, street lighting, car parking, fly-tipping, just about anything.

I would like to thank all the members of the Council for their time and the Clerk for her patience.

Bob Graham (Chairman)



Eden and Lyne Buzz



The Vicarage, Rockcliffe, Carlisle, CA6 4AA

Rev'd Jan van den Berg – 01228-674209

Most of us are familiar with 'the Church', that is the Church of England, Methodist Church, Roman Catholic Church, the United Reformed Church and the Pentecostal Church. The first three are the more numerous and are found in most villages and towns. All of the above, except the Pentecostal Church, have been experiencing a 'downturn' and/or are slowly declining in numbers and adherence. Church buildings are closing, albeit at a slow pace, and congregations are amalgamating with other Churches and fewer pennies are dropping onto collection plates and fewer people are contributing towards the cost of maintaining church buildings and grounds.

In my previous article (see June/July magazine) I referred to the upcoming clergy retirements, and, combined with few clergy willing to move up north, the C of E, Methodist and URC Churches have embarked (possibly out of necessity) on the creation of Ecumenical 'Super' parishes – in Cumbria we call these 'Mission Communities'. Question is: will this new programme of re-organisation halt the decline lead us to better a better future?

Anyway, it is happening all over the county and so far several Mission Communities have been successfully launched and now it's our turn: at a meeting in Brampton held on the 12th July, it was decided that in the northern part of Cumbria – also called the Brampton Deanery - the Anglican parishes of Rockcliffe, Blackford, Arthuret, Nicholforest, Kirkandrews on Esk, Bewcastle, Stapleton, Hethersgill and Kirklington will be amalgamated into a Mission Community with 1 paid clergy person and 1 part-time house for duty clergy person * – this is down from 3 clergy; the Eden, Gelt & Irthing Team ministry with its 10 churches will amalgamate with Lanercost, Walton, Gilsland and Nether Denton with 2 full-time clergy, down from 3 clergy; then Wetheral, Cumwhinton, Holme Eden, Scotby and Cotehill (Warwick closed in 2017) will be joined together with 2 clergy. This means that in this Deanery we will lose 4 clergy and further clergy retirements before 2020 are in the pipeline.

Let me finish this article with a quote from Sam Allberry's book – 'Why bother with Church?' *The weekly gathering that Christians do in their churches is basically a re-enactment of what the early Christians did. All the people of God still gather to celebrate/to worship – all ages which is sometimes referred to as the universal church. So the church is not just a building but it is also people, and this church matters. I once heard it said that there is no such thing as a God-forsaken place, but there is such a thing as a church-forsaken place. For a region to be without a church means that it does not have access to the truth of God's goodness and love. Lacking a church is not equivalent to lacking a decent supermarket or cinema; it is like lacking a hospital or a source of water. It is an utter necessity.*

*House for duty = a clergy person who doesn't get a stipend (monthly wage) but performs clergy duties on Sundays and two more days of the week in return for rent free living in a vicarage. Usually this person is retired.

PARISH REGISTERS ARE ON PAGE 21

ROCKCLIFFE PARISH COUNCIL REPORT—17th JULY 2017— Continued from Page 15

Solway Coast AONB Boundary Extension Councillors considered a letter received from a Rockcliffe resident which requested that the PC continues in its pursuit of securing an extension of the AONB boundary to include Rockcliffe. Having entered into dialogue with Carlisle City Councils Principle Planning Officer and Natural England it was agreed to submit a formal request to Carlisle City Council.

Blencarn Park- Registration of Village Green Clerk advised the PC that Cumbria County Council were minded to refuse the application to register the area of green space at Blencarn Park as a village green, due to the use of the land being considered as 'by right' not 'as of right' and that evidence supporting the application gathered from residents was considered insufficient. County Cllr V Tarbitt agreed to gain further clarity on why the application looked likely to be refused and to report back further on the item to the PC.

Date of Next Meeting Monday 18th September 2017

The full minutes can be found on our website www.rockcliffeparishcouncil.co.uk or via the notice boards.

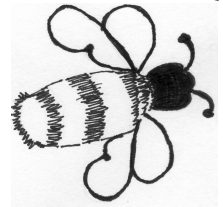
John Harper— Chair Rockcliffe PC

This edition is sponsored by


The Cumberland



Eden and Lyne Buzz



ROCKCLIFFE **TUESDAY CLUB**



Fun for Seniors

Retired and Want to meet new friends?

Then come and join the
Rockcliffe Tuesday Club
at the Rockcliffe Centre.

Membership Fee £12 per quarter.

PROGRAMME

- Aug 8 – Lifeboats – Mr David Edwards
- Aug 22 – Golf Hotel, Silloth, afternoon tea. Bus 2pm
- Sep 5—Jim Bell—Pride of Britain Award
- Sep 19—Buffet - Jean Corrigan at 1pm.
- Oct 3—Bill McClintock—Film
- Oct 17—Skitby House Lunch, Bus at 12 Noon.
- Oct 31—Update on Kenya talk.

FURTHER INFORMATION FROM

ANN HAY 674363 OR WINNIE BRAND 674470



**MEMBERS OF THE TUESDAY CLUB
ENJOYING THEIR AFTERNOON TEA
IN THE WALLED GARDEN AT
CASTLETOWN**



SEAN CRILLEY

Independent Family Funeral Directors

78 Brook Street, Carlisle

*"A Local Firm Proudly Serving
Local Families"*

**For 24 Hour Personal Attention,
Call Sean on (01228) 544905**

Private Chapel of Rest – Pre-Paid Funeral Plans

Memorial Consultants

www.seancrilleyfuneraldirectors.com

Email: sean@seancrilleyfuneraldirectors.com

JARED STOREY

CHIMNEY SWEEPS

Maintenance Services

Brian Ross

Chimney Sweep

6 Skitby Road, Smithfield,
Carlisle CA6 6AY

Tel : 01228-675311

Mob: 07720 532769

Email: bross1764@btinternet.com



Jean Corrighan

CateringCor

**Weddings, Corporate Buffets,
Christenings, Home Entertaining,
Funeral Teas, Parties,
Cookery Lessons**

FOOD STANDARDS AGENCY (LEVEL 5)

9 Newfield Park

Kingstown

Carlisle

CA3 0AH

Tel: 01228 401183

Mob: 07762 012439

LAWN-ORDER

Tree and Ground Maintenance

ALL TYPES OF TREWORK UNDERTAKEN

Chainsaw Sculptures, Free Standings,

Trees removed stumps carved.

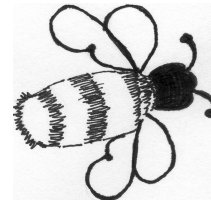
01228 711853 or 07940 562391

johnstongl@btinternet.com

Fully Insured / Free Estimates



Eden and Lyne Buzz



LITTLE Accounting Solutions Limited

Chartered Accountant and Chartered Tax Adviser



Expert Chartered Accountant offering a full range of
accountancy, tax advice and business services.
If you need an ACCOUNTANT you can really talk to.
For Professional plain speaking advice in a
straightforward manner –

CONTACT TRACY LITTLE

Year End and Management Accounts

Taxation and Planning. VAT / Payroll

Budgeting / Forecasting

Business Strategy / Development

For a FREE, no obligation discussion, contact
Tracy on 01228– 812408 Mob: 07979 550860

Or admin@littleaccountingsolutions.co.uk

WEBSITE: www.littleaccountingsolutions.co.uk

Carlisle Firewood

Barn Dried Logs and Kindling

We supply and Deliver Hard
and Soft Wood

2 Free Nets of Kindling with Your

First Trailer Load of Logs

Guaranteed "Ready To Burn"

Call Steven on 07802775792



SMITHFIELD GARAGE

Kirklington • Carlisle

Car & Van Servicing & Repairs

M.O.T.'s on Cars, Large Vans & Motorcycles

Extensive Body Shop Facilities

Tel: 01228-675467

Fax: 01228-675158

DIANE CLAPPERTON

Mobile Hairdresser
Ladies /Gentlemen



Tel: 01228 380463

Mob: 07526 465577

26 Woodlands Close Stanwix Carlisle



Depart:

Tuesday and Friday		Single fare to Carlisle
Rockcliffe School	10:30	£1.25
Cargo Bus Shelter	10:36	£1.00
Arrival: Carlisle*	10:50	
Return: Carlisle*	13:30	

*Drop off and pick up point to be agreed by passenger demand on the day

What is it?

A new minibus scheme for residents of **Rockcliffe and Cargo** providing Tuesday and Friday transport **to and from Carlisle**.

What should you do...

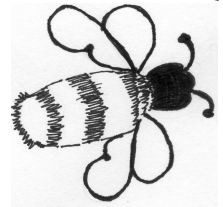
- Phone **01228 221055** to join.
- Wait for your Smartcard.
- Then phone **01228 226430** by 12 noon the day before you wish to travel to book your seat.

Then off you go!

As village wheels is not a registered bus service, passengers are unable to use their concessionary NoWcards.



Eden and Lyne Buzz



Carlisle - Plumbers

Landline 01228-494022
Mobile 07570-040048



Find us on **Checkatrade.com**

Whether a simple tap repair or a complex bathroom remodelling, at Carlisle-Plumbers, we pride ourselves on attention to detail and customer satisfaction. Carlisle- Plumbers is committed to serving our customers with the highest quality service and professional repairs. All of the products we utilize are of the highest quality, craftsmanship and design. With Carlisle-Plumbers, you can rest assured that your plumbing and heating needs are in good hands. Carlisle -Plumbers services Carlisle and the surrounding areas.

NO JOB TOO SMALL

Carlisle-Plumbers
37 Parkland Avenue, Carlisle CA1 3GN
01228-494022 or 07570-040048
Email: info@carlisle-plumbers.com



**MAKING A DIFFERENCE
IN CARLISLE AND THE COMMUNITY**

Be part of the team
that makes things happen.

Contact Wendy Aldred 07968 181562

This edition is sponsored by

The Cumberland

CONGRATULATIONS

Mrs Anne Parrini of Rockcliffe receiving her badge in recognition for 30 years active service with the Eden Valley Hospice. Anne worked on the original fund raising team, then day care, bereavement counselling and the Hospice laundry. She now works in the Hospice Shop and helps At home sorting out the donations of stamps.



ROYAL AIR CADETS
AIR FORCE the next generation

1862 City of Carlisle) Squadron

Royal Air Force Air Cadets

We are Recruiting Now!

Between ages 12 (Year 8) and 16?

Carlisle Air Cadets, Crindledyke, Carlisle, CA6 4BZ

Google 'Carlisle Air Cadets' for directions

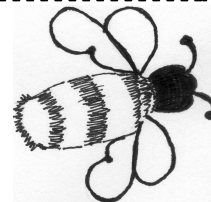
Monday & Friday 7pm till 9.30pm

www.facebook.com/1862sqn Phone 01228 674559

Email 1862@aircadets.org



Eden and Lyne Buzz



ROCKCLIFFE CRICKET CLUB



Fixture List 2017

Rockcliffe A Carlisle and District League Midweek—Division C

Wednesday 2 August Kings Head Home

Eden Valley League Weekend Fixtures Premier Division

Saturday 5 August	Scotby	Home
Saturday 12 August	Carlisle II	Away
Sunday 13 August	Stainton	Home
Sunday 13 August	Senior cup Semis & Final	
Saturday 19 August	Temple Sowerby	Home
Saturday 26 August	Threlkeld	Away
Saturday 2 September	No game	
Saturday 9 September	Kirkby Stephen	Away

Rockcliffe B Carlisle and District League Midweek—Division C

Wednesday 2 August Futamura Away



INDOOR BOWLS CLUB

The Indoor Bowls Club holds over £2000 worth of equipment, but needs to find new interest in running sessions to suit new members whether that be daytime or evenings. Existing members are prepared to adapt in order to sustain a local indoor Bowls Club. If you are interested in starting a new Bowls Club at Rockcliffe or helping to reinvigorate the existing Club, please let Ann Hay know (674363). **If no one comes forward by 1st October the Club will close down permanently and the equipment sold.**



"A RESTORATION IN PROGRESS"

Contact Details; www.Kirklingtonhall.co.uk

Telephone 01228 231045

Kirklington CA6 6BB

Opening Times: 1st April-30th Sept –

Sunday to Friday - 12noon-5pm

(closed Saturdays)

Adults £4.00; Children under 16 £1.00.

Season Tickets - Single £10; Family £22.

WALKS, SHOP, TEA ROOM, ROSES AND PLANTS,

SEASONAL – Pick Your Own Fruit.

"Just a lovely place to visit"

Parish Registers

FUNERALS

Christine Coulthard (75) Funeral Service and burial in the morning followed by a Memorial Service at Blackford Church on Wednesday 24th May.

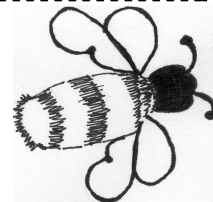
Chi Kwok Wong (68) Service followed by burial at Blackford Churchyard on Tuesday 30th May

Carol Minnett (74) Internment of ashes took place on 31st May at Rockcliffe

HOLY BAPTISM

Harry Robin Crozier and Finley James Crozier at Rockcliffe Sunday 25th June

Eden and Lyne Buzz



EDEN AND LYNE BUZZ CONSTITUTION

The bEden and Lyne Buzz is a community magazine run by unpaid volunteers on a not for profit basis.

Eden and Lyne Buzz is run by a group of volunteer Trustees who, for the time being are Mr A L Parrini (Chairman and Editor), Mrs Janette Fisher (Treasurer), Mrs Judith Twentyman (Secretary) and Mrs Ann Hay (Advertising Coordinator).

The Bank Account is with The Cumberland Building Soc'ty.

All payments out of the account will be by Cheque signed by the Treasurer and 2 other Trustees.

Legitimate expenses are available if requested by volunteers and Trustees if approved unanimously by the Trustees.

Eden and Lyne Buzz will be published 6 times per year.

Subscriptions and Advertising Rates will be set by the Trustees in April each year based on the financial results of the previous year's trading.

The Trustees will invite all subscribers to attend an AGM in May each year to present the accounts and agree the distribution of any surplus funds held.

DISCLAIMER

The Eden and Lyne Buzz is produced for residents in the Rockcliffe, Kingmoor and Westlinton Parish Council areas.

The magazine seeks to serve the local community by including local community events, advertisements and items of local interest. Inclusion of such material in the magazine does not imply that the Trustees endorse everything that is mentioned, nor are they responsible for any inaccuracies in the information supplied.

Trustees

Mrs Ann Hay, Mrs Judith Twentyman,
Mr Tony Parrini and Mrs Janette Fisher

EMAIL ADDRESS: edenandlynebuzz@gmail.com

**PLEASE SUPPORT OUR ADVERTISERS
AND WHEN YOU DO
PLEASE MENTION
THE EDEN AND LYNE BUZZ**

QUOTATIONS ABOUT THE GARDEN

Gardening requires lots of water – most of it in the form of perspiration. **Lou Erikson**

Gardening is cheaper than therapy – and you get tomatoes. **Unknown**

In order to live off a garden, you practically have to live in it. **Frank Hubbard.**

There can be no other occupation like gardening in which, if you creep up behind someone at their work, you would find them smiling. **Mirabel Osler.**

The best place to seek God is in the garden. You can dig for Him there. **G B Shaw**

My garden of flowers is also my garden of thoughts and dreams. The thoughts grow freely as the flowers and the dreams are beautiful. Abram **L.Urban.**

Weather means more when you have a garden. There's nothing like listening to a shower and thinking how it is soaking round the green beans. **Marcelene Cox.**

God made rainy days so that gardeners could get some housework done. **Unknown.**

You can bury a lot of troubles digging in the garden. **Unknown.**

No two gardens are the same. No two days are the same in one garden. **Hugh Johnson.**

Coffee. Garden. Coffee. Does a good morning need anything else? **B C Garmon.**

The hum of bees is the voice of the garden.

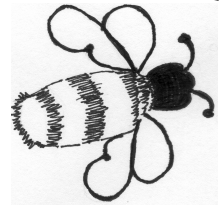
Elizabeth Lawrence.

In the spring, at the end of the day, you should smell like dirt. **Margaret Attwood.**

SUDOKU – Solution – See Page 4

7	8	9	1	2	5	6	4	3
1	3	6	8	4	7	9	5	2
2	5	4	9	6	3	7	1	8
8	7	1	6	5	4	2	3	9
6	9	5	2	3	1	4	8	7
3	4	2	7	8	6	5	9	1
9	1	3	5	6	2	8	7	4
5	2	7	4	1	8	3	6	9
4	9	8	3	7	6	1	2	5

Eden and Lyne Buzz



Mortgages in retirement

55 to 105 and beyond...

there's no upper age limit on our mortgages

0800 032 3030 cumberland.co.uk



The Cumberland
It's grin up north

Your mortgage is secured on your home. Think carefully before securing other debts against your home. Your home may be repossessed if you do not keep up repayments on your mortgage.

QUOTE PROMO CODE

BUZZ1

**When Ordering
To Receive Free Planter
With All Orders Over £1000**

Harker

**GARDEN BUILDINGS LTD
INCORPORATING — A1-LAPFENCING**



We Supply and Install Quality Garden Products



WOODEN



FENCING



BESPOKE



SHEDS



INSULATED

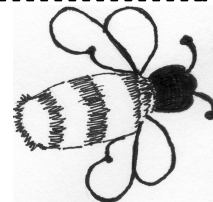
**Lap Fencing
Feather Edge
Board On Board
Trellis Fencing**

**Garden Sheds
Summerhouses
Potting Sheds
Dog Kennels**

**Insulated S
Insulated C
Insulated V
Insulated C**



Eden and Lyne Buzz



CURRY NIGHT
EVERY THURSDAY

Thursday Curry Club
CHOICE OF 3 CURRIES AND
ALL THE TRIMMINGS FOR
£8

**SIZZLIN'
SUMMER
SAVER'S
MENU**

£6 EACH



SUNDAY LUNCHES
from £8.50

Tues-Thurs: 12 - 2:30PM & 5 - 10:30PM

Fri: 12 - 2:30PM & 5PM - 12AM

Sat: 12PM - 12AM Sun: 12PM - 10:30PM

Last Food Orders Daily at 8:45PM

T. 01228 674 545

Rockcliffe, Carlisle, CA6 4AA
www.crownandthistlerockcliffe.co.uk

