

CROWN & THISTLE

BOOK NOW
for
**FATHER'S
DAY**

Sunday 18th June



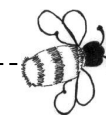
**BRITISH PIE
NIGHT
EVERY
WEDNESDAY
FROM 5pm
3 PIES
AVAILABLE
£7 PER MEAL**

SUNDAY LUNCHES
from £8.50

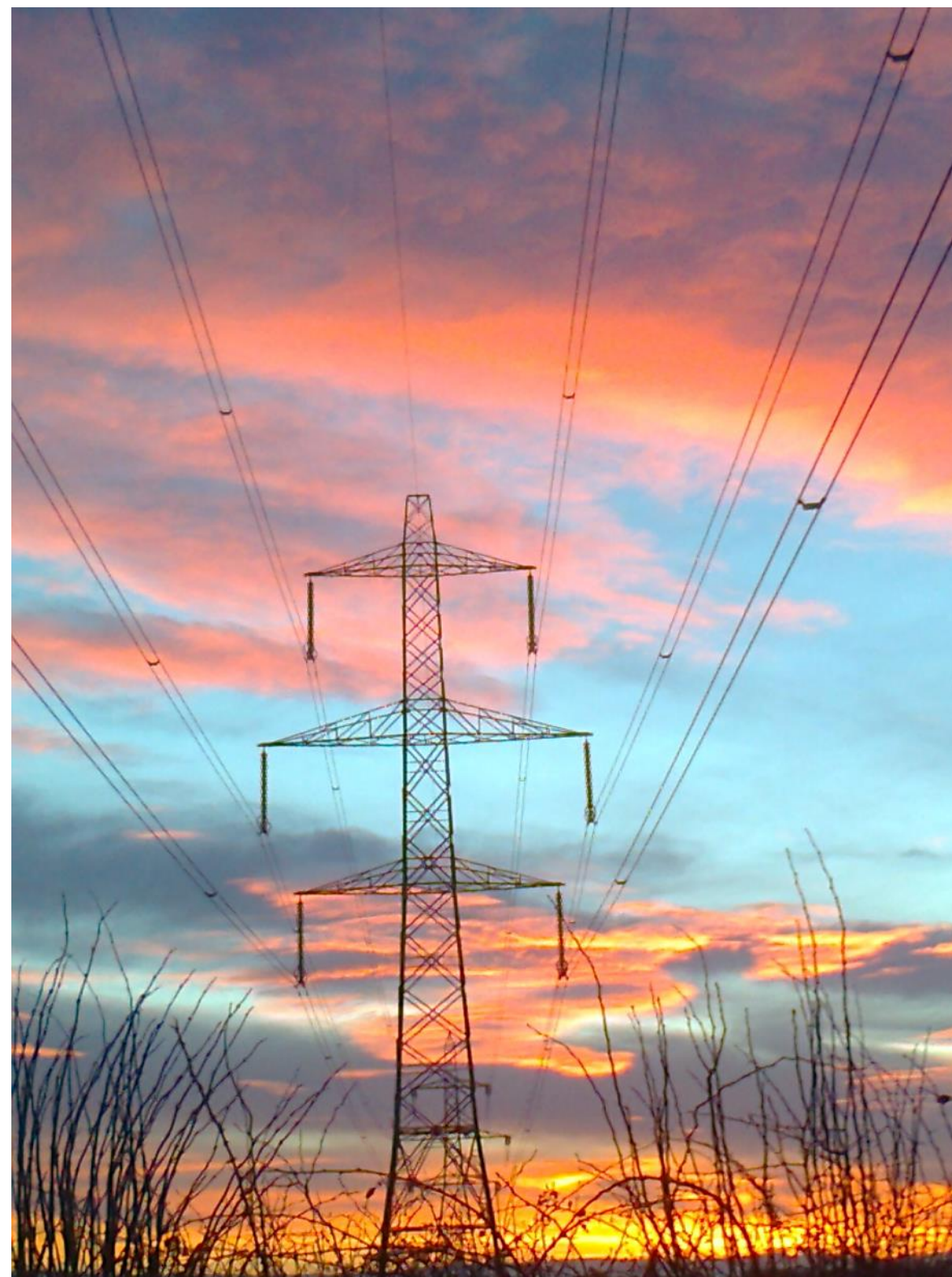
Tues-Thurs: 12 - 2:30PM & 5 - 10:30PM
Fri: 12 - 2:30PM & 5PM - 12AM
Sat: 12PM - 12AM Sun: 12PM - 10:30PM
Last Food Orders Daily at 8:45PM

T. 01228 674 545

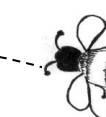
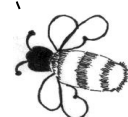
Rockcliffe, Carlisle, CA6 4AA
www.crownandthistlerockcliffe.co.uk



FOR THE COMMUNITIES OF ROCKCLIFFE, CARGO, HARKER,
BLACKFORD, WESTLINTON AND ALL POINTS IN BETWEEN



SOLAR OR NUCLEAR—IS THAT THE QUESTION?"



Eden and Lyne Buzz

IN THIS EDITION

Cover Photo— Stormy Dawn at Blackrigg
 Page 2 - Constitution, Advertisers, Copy Date
 Page 3— Editorial, What's On
 Page 4— Blackford WI and PCC
 Page 5—The Carlisle Patriot 1815 and the Litterpick
 Page 7— Children's Page
 Page 9 — The High Tides of 1967
 Page 11— Presentation of a BEM
 Page 12— Rockcliffe Parish Council
 Page 13 — Kingmoor PC and Westlinton PC
 Page 14— Westlinton AGM Report
 Page 15— Community Fund and Fire Safety
 Page 17— From the Vicarage, Parish Registers
 Page 18— Rockcliffe, Blackford and
 St Augustine's Church Services
 Page 20 —Sudoku Puzzle
 Page 21—Rockcliffe Cricket Club Fixture List
 Page 22—Rockcliffe Centre
 Page 23—Blackford School News

EDEN AND LYNE BUZZ CONSTITUTION

Eden and Lyne Buzz is a community magazine run by unpaid volunteers on a not for profit basis.
 Eden and Lyne Buzz is run by a group of volunteer Trustees who, for the time being are Mr A L Parrini (Chairman and Editor), Mrs Janette Fisher (Treasurer), Mrs Judith Twentyman (Secretary) and Mrs Ann Hay (Advertising Coordinator).
 The Bank Account is with The Cumberland Building Soc'ty. All payments out of the account will be by Cheques signed by the Treasurer and 2 other Trustees.
 Legitimate expenses are available if requested by volunteers and Trustees if approved unanimously by the Trustees.
 Eden and Lyne Buzz will be published 6 times per year.
 Subscriptions and Advertising Rates will be set by the Trustees in April each year based on the financial results of the previous year's trading.
 The Trustees will invite all subscribers to attend an AGM in May each year to present the accounts and agree the distribution of any surplus funds held.

DISCLAIMER

The Eden and Lyne Buzz is produced for residents in the Rockcliffe, Kingmoor and Westlinton Parish Council areas.
 The magazine seeks to serve the local community by including local community events, advertisements and items of local interest. Inclusion of such material in the magazine does not imply that the Trustees endorse everything that is mentioned, nor are they responsible for any inaccuracies in the information supplied.

LIST OF ADVERTISED SERVICES

Accountant—Page 16
 Boiler Servicing, Repairs and Installation—Page 19
 Building Society/Bank—Page 22
 Catering—Page 14
 Chimney Sweeps—Pages 8 and 15
 Chiropodist—Page 10
 Coffee Mornings—Page 6
 Computer repairs etc—10
 Domestic Appliances Repairs and Sales—11
 Electrical Repairs etc— Page 6
 Firewood/Logs—Page 16
 Food Bank—Page 8
 Funeral Director—Page 10
 Garden Centre—Page 6
 Garden Maintenance—Page 10
 Hair Dresser (Mobile) Page 16
 Indoor Bowls—Page 21
 Karate Classes—Page 13
 Kennels—Page 23
 Kirklington Hall—Page 20
 Milk and Newspaper Deliveries—Page 6
 Plumber—Page 20
 Public House—Page 24
 Rockcliffe Centre—Page 22
 Rotary Club—Page 20
 Scarecrow Festival—Page 6
 Sheds and Fences etc—Page 10
 Summer Fayre—Page 23
 Tax/Wills advice—Page 10
 Tree Feller—Page 14
 Tuesday Club—Page 14
 Vehicle Repairs—Page 16
 Window Cleaning etc—Page 10
 Village Wheels—Page 16

NEXT COPY DATE

The Eden and Lyne Buzz will be produced 6 times a year at the start of the even months Feb, Apr, Jun, Aug, Oct and Dec.
 Material can be sent at anytime to edenandlynebuzz@gmail.com

The final date for material for the Aug/ Sep Edition is
FRIDAY 21st JULY 2017

Eden and Lyne Buzz



"Detectives" is the whole-school topic this term; the children are investigating many different areas. The infants have been on a minibeast hunt around the school grounds and then researched facts about their finds. They have also made moving models of snails and caterpillars whilst practicing their cutting and sticking skills. At playtimes, there are many minibeast homes being created on the school field from all kinds of materials. The junior children are being history detectives and are investigating the impact that the Romans had on the local area. In Art, they are designing and making their own Roman-style mosaics created with different media.
After-school clubs The school choir meets on Wednesdays after school and took part in Carlisle Music Festival. They were the smallest choir there, with only 11 children, but were highly commended for the beautiful sounds they created. Numbers have increased recently and they really are a joy to listen to.

Gardening club continue to meet on Thursday after school and have made planters to decorate the fence. They were most excited to see the arrival of the first flowers on the strawberries. Thursday also has cricket club which will carry on until the end of this term.

Carlisle United leads a multi-skills club on Tuesdays. Gymnastics continues on Mondays and the children are busily preparing for an end of year performance to parents and the rest of the school.

Invitation

Our choir will be performing a range of pieces at a tea/ coffee and cake afternoon on Wednesday 28th June from 2pm until end of school. We would like to warmly invite any members of the community to join us. Please let us know on 01228 674614 or via email if you are coming so we can be sure there's enough refreshments!



1862 City of Carlisle) Squadron

Royal Air Force Air Cadets

We are Recruiting Now!

Between ages 12 (Year 8) and 16?

Carlisle Air Cadets, Crindledyke, Carlisle, CA6 4BZ

Google 'Carlisle Air Cadets' for directions

Monday & Friday 7pm till 9.30pm

www.facebook.com/1862sqn Phone 01228 674559

Email 1862@aircadets.org



LYNEFOOT KENNELS

<http://lynefootkennelsltd.co.uk>

Established in 2009 Lynefoot Kennels is a family run business. With help from a small, dedicated team, we want you to leave your dog knowing that they will receive our personal care and attention at all times.

"Lynefoot is a friendly, family-run kennel with high standards of cleanliness and care . . . Extremely roomy indoor kennels with an outside bit . . . An exercise pen which David and his family make sure all dogs get use of throughout the day . . . Twice daily walks in lovely fields . . . It is reassuring to know that they make regular checks on vacs and health updates"

Address: Lynefoot Kennels,
 Lynefoot Farm, Carlisle, CA6 6AJ

Telephone: [01228 674 376](tel:01228674376)

Email: fiona@lynefootfarm.plus.com



ROCKCLIFFE CENTRE
SUNDAY 2ND JULY

2.30pm to 4.30pm

Afternoon Teas, Stalls, Raffle Draw

Competitions for the Children

SUDOKU – Solution – See Page 20

6	8	9	2	5	7	4	1	3
1	2	4	3	9	8	6	5	7
7	3	5	6	1	4	9	8	2
4	5	3	8	7	9	1	2	6
2	6	8	1	4	3	7	9	5
9	7	1	5	6	2	3	4	8
3	1	6	9	2	5	8	7	4
8	4	2	7	3	1	5	6	9
5	9	7	4	8	6	2	3	1

Eden and Lyne Buzz

The Rockcliffe Centre

The centre is equipped with everything you could want for your event, wedding, party or show. We have 2 rooms, of different sizes, so you can pick and choose how much of the centre you need. We also have an excellent kitchen, and if required a bar.

So if your looking for a venue for a wedding, funeral, birthday party or a sports day get in touch and get an excellent value for money quote from The Rockcliffe Centre.

Hire Charges

Small Hall that seats approx 60 People – £8 per Hour – £10 per Hour with Kitchen

And the Main Hall that seats approx 150 People – £10 per Hour – £15 per Hour with Kitchen

Small functions like christenings etc which require the bar will be charged and extra £10 per hour.

For hire of the whole centre £150 + £50 refundable deposit.

Wedding Packages

The centre also has various wedding packages available, for further information please contact Nicola Johnston on 01228 672116

Here at the Rockcliffe Centre we have a wide variety of activities which are available both during the day and on an evening, if you think you may like to join any please get in touch with the person who is in charge of the particular activity you are interested in.

Mondays

1st Rockcliffe Rainbows 5.30pm - 6.30pm contact Vicky Armstrong on 07495278327

Karate 6pm - 7pm contact Alistair on 07557029712

Tuesdays

Tuesday Club (alternate Tuesdays) 1.30pm - 4pm contact Ann Hay on 01228 674363

Beginners Dancing 6.30pm - 9.30pm contact Kath Hunter on 01228 528166

Yoga Flow 7pm - 8pm contact Dawn Whittington on 07850076059

Thursdays

Dog Obedience Classes 11am - Noon contact Sheila Hind on

Fridays

Whist (2nd Friday of each month) 7.30pm - 10pm contact Hazel Graham on 01228 674372

April Whist will be held on 21st instead of 14th due to it falling on Good Friday.

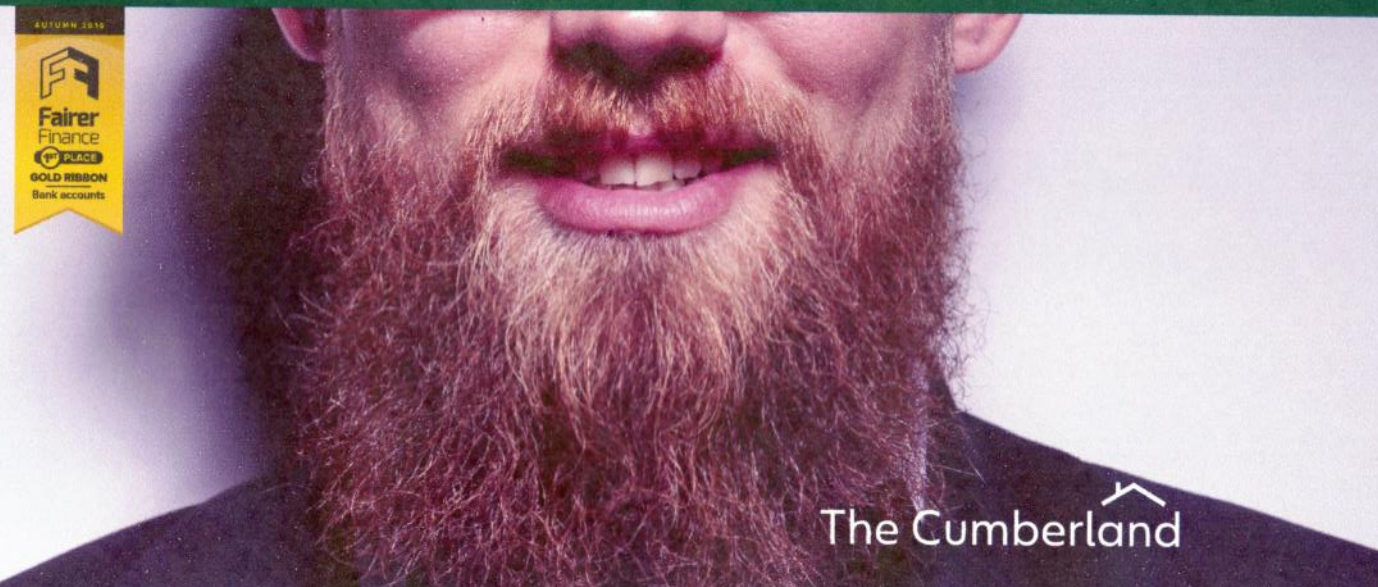
If you run or know someone who runs an activity and you think the Rockcliffe Centre is a good venue to hold it then please contact Nicola Johnston on 01228 672116 to see what days and times are available.

It's grin up north

Our bank account customers are **still** the happiest in the UK

Fairer Finance award winners for the second time in a row; Autumn 2016 and Spring 2017

0800 032 3030 cumberland.co.uk



Eden and Lyne Buzz

WE ARE BUZZING!!!

Thanks to all who have sent in Emails and notes to praise the new Eden and Lyne Buzz.— you obviously like our first efforts. You like the size, the format, the quality of the articles, the clarity of the printing and so far we haven't had a bad word spoken! So thank you. In addition, we must thank all the people who offered donations to get the first edition launched in just under 2 weeks. We pushed the boat out a bit and didn't have to worry about the cost.

One comment was that £5 was too little to pay as a subscription through to April 2018. At the moment we plan to stick with this level of subscription, but if you feel inclined to pay more or make a donation, we won't refuse the gesture.

However, we are aware that we can seek funds from the Burn Beck Windfarm Fund or via the small grants process via the local Parish Councils if necessary..

By the time this edition gets to you we will have had the local County Elections and we'll be very close to the General Election. These are important events and certainly the General Election will have an enormous influence on our community.

COMMUNITY

One of the aims of this magazine is to communicate the events, facilities and local businesses available to our readers. It is a great shame that many of the events and activities arranged by well meaning people do not get local support. Two different advertisers of activities both said that they had no local support for their leisure activities and felt that it was not worth advertising their classes!! Many events in the Rockcliffe Centre have folded in recent times through a lack of local support. It seems a bit strange when people from Wigton, Scotby and the City Centre travel to Rockcliffe, yet residents from the surrounding villages seem uninterested. If this magazine can help reverse this tendency, then it will have done its job. There are plenty of events advertised throughout this edition, so please give them your support. Just look at pages 6, 8, 14, 17, 20, 21 and 23 for some examples.

The "Eden and Lyne Buzz" is your community magazine and we need you to help with new articles and ideas to improve the publication and make it the best means of communication of events, services and local news stories.

Here's some ideas:

Would someone produce regular Gardening Tips?

How about some Favourite recipes?

What about a Sales and Wants Column?

Please put on your thinking caps, be creative and let's have some submissions for the next Edition.

Trustees

Mrs Ann Hay, Mrs Judith Twentyman,

Mr Tony Parrini and Mrs Janette Fisher

EMAIL ADDRESS: edenandlynebuzz@gmail.com

WHAT'S ON - FUTURE EVENTS

JUNE

4th to 11th — Scarecrow Festival (See Page 5)

8th June — General Election

12th June- Blackford WI (See Page 4)

17th June—Cumberland Show at Brisco

24th June – Armed Forces Day in City Centre

30th — Fashion Show - Rockcliffe Centre
(See advert on page 20)

JULY

2nd July – Summer Fayre (Rockcliffe Centre)
(See advert on Page 17)

8th July—Open Garden and Afternoon Tea
(See advert on Page 17)

AUGUST AND BEYOND

28th August – Bank Holiday

Car Boot Sale at St Augustines

1st October – Harvest Festival and Supper

28th October to 11th November – Poppy Appeal

4th November – Fireshow in Bitts Park

12th November – Remembrance Sunday

26th November – Rockcliffe Christmas Fair

IF YOU HAVE DATES YOU WISH TO ADD TO THIS LIST PLEASE SEND DETAILS TO
edenandlynebuzz@gmail.com

Eden and Lyne Buzz



BLACKFORD W.I.

MEETING MONDAY
8TH MAY 2017.

We arrived at the School for 6.45 pm to set up sort out the refreshments.

Linda welcomed members and guests from Brampton, Cummersdale, Linstock, Walton, Nicholforest and Margaret and Carolyn. Apologies were received from Joy.

Our speaker Jackie Moffat commenced with her talk about 'The Funny Farm and Beyond'. Jackie was born in Barnes but came to live in Cumbria in 1982 on a 20-acre farm where she kept Cheviot sheep and various cows, the Jersey variety being utilized to make cheese etc. She told of her former years working for New Scotland Yard and then the Special Branch. She started writing for Cumbria Life in 1993 and then she wrote a best seller called 'The Funny Farm' with her beloved dog Tess on the front cover. Her second book was called 'Sheepwrecked' and this time Katie adorned the cover. Jackie also has a love of horse riding and rides locally at Blackdyke. Barbara gave the vote of thanks for an entertaining evening with interesting and amusing stories.

Jackie judged the competition for a small animal ornament and Linda Davidson won this and Irene Woodmass won the competition for the guests.

We then served refreshments from a table laden with sandwiches and cakes. Whilst this was happening the raffle tickets were being sold. Linda Davidson passed around an animal anagram quiz and more than one team got full marks.

We then had the raffle; the prizes were well distributed amongst members and guests. A vote of thanks was given from all the W.I.'s attending and they left for home at approximately 9.30 pm.

The hall was tidied up then we did a little business. Invitations from Lees Hill and Warwick Bridge will be accepted. Linda Davidson took names for those wishing to attend the Group Meeting meal to be held at Houghton on 25th May. The cost is £10 and as we will be selling raffle tickets we need to be there by 6.30 pm. The competition is a homemade 80th Birthday Card. We then kept a minutes silence in remembrance of Mary Colville. The meeting came to a close at 10.00 pm.

Our next meeting is on 12th June; the speaker will be from the Wordsworth Trust, Grasmere.
Visitors are always welcome.

BLACKFORD PCC

St John's Church, Blackford

Craft Fayre

Thank you for your support and generosity at the Craft Fayre. We had a steady stream of visitors and hope that the stall holders had a good day. There were some lovely products on display. Without all your help we would not be able to hold these events. Everyone worked so well and stayed longer than expected. The marvellous amount of £850 was raised.

Roof Repairs

We were very pleased that the repairs to the Church roof were completed before the winter. These repairs would not have been possible without your very generous donations and your support at our fund raising events. Thank you all so much.

Flower Rota 2017

We have very skilled flower arrangers who will be happy to arrange flowers in Church on your behalf. If you would like to supply flowers or ask the flower committee member to buy them on your behalf for a special commemorative day please contact the committee member on the rota to discuss your needs and prices.

Please contact:

June: Mrs C Hewson 674699

July: Mrs D Nicholson 674387

August: Mrs G Carter 674006



THANK YOU Alan and Christine Coulthard wish to thank all friends, neighbours and parishioners from Blackford, Rockcliffe, Kirklington, Longtown and further afield, the Church and the W.I. for their kindness, support, cards and letter of encouragement during Christine's recent and on-going illness.

We have been completely overwhelmed by everyone's generosity.

Alan and Christine Coulthard

Eden and Lyne Buzz

ROCKCLIFFE CRICKET CLUB

Fixture List 2017

Rockcliffe A Carlisle and District League Midweek—Division C

Wednesday 7 June	Civic Centre	Away
Wednesday 14 June	Kings Head	Away
Wednesday 21 June	Carleton	Away
Wednesday 28 June	Cumb Infirmary	Away
Wednesday 5 July	Rockcliffe B	Away
Wednesday 12 July	Futamura	Home
Wednesday 19 July	Sealy Sloggers	Away
Wednesday 26 July	Civic Centre	Home
Wednesday 2 August	Kings Head	Home

Eden Valley League Weekend Fixtures Premier Division

Saturday 3 June	Temple Sowerby	Away
Saturday 10 June	Threlkeld	Home
Sunday 11 June	Senior cup Round 2	
Saturday 17 June	No game	
Saturday 24 June	Braithwaite	Away
Saturday 1 July	Appleby	Home
Sunday 9 July	Caldbeck	Home
Saturday 15 July	Kirkby Stephen	Home
Saturday 22 July	Scotby	Away
Sunday 23 July	Senior cup Quarters	
Saturday 29 July	Braithwaite	Home
Saturday 5 August	Scotby	Home
Saturday 12 August	Carlisle II	Away
Sunday 13 August	Stainton	Home
Sunday 13 August	Senior cup Semis & Final	
Saturday 19 August	Temple Sowerby	Home
Saturday 26 August	Threlkeld	Away
Saturday 2 September	No game	
Saturday 9 September	Kirkby Stephen	Away



Rockcliffe B Carlisle and District League Midweek—Division C

Wednesday 7 June	Kings Head	Home
Wednesday 14 June	Futamura	Home
Wednesday 21 June	Sealy Sloggers	Home
Wednesday 28 June	Civic Centre	Away
Wednesday 5 July	Rockcliffe A	Home
Wednesday 12 July	Carleton	Away
Wednesday 19 July	Cumb Infirmary	Home
Wednesday 26 July	Kings Head	Away
Wednesday 2 August	Futamura	Away

*The two rival cricketers were talking.
'The local team wants me to play for them very badly.'
"Well, you're just the man for the job."*



INDOOR BOWLS CLUB

The Indoor Bowls Club will not meet again until the Autumn. It is hoped to find new interest and that evening sessions as well as the afternoon can be reintroduced. If you are interested in starting a new Bowls Club at Rockcliffe or helping to reinvigorate the existing Club, please let Ann Hay know (674363). If no-one is interested by October we will close down permanently and sell the equipment.

dodd&co
know how



Mitchells

Eden and Lyne Buzz



Carlisle - Plumbers

Landline 01228-494022
Mobile 07570-040048



Find us on **Checkatrade.com**

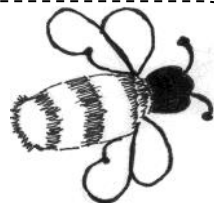
Whether a simple tap repair or a complex bathroom remodelling, at Carlisle-Plumbers, we pride ourselves on attention to detail and customer satisfaction. Carlisle- Plumbers is committed to serving our customers with the highest quality service and professional repairs. All of the products we utilize are of the highest quality, craftsmanship and design. With Carlisle-Plumbers, you can rest assured that your plumbing and heating needs are in good hands. Carlisle -Plumbers services Carlisle and the surrounding areas.

NO JOB TOO SMALL

Carlisle-Plumbers
37 Parkland Avenue, Carlisle CA1 3GN
01228-494022 or 07570-040048
Email: info@carlisle-plumbers.com



**MAKING A DIFFERENCE
IN CARLISLE AND THE COMMUNITY**
Be part of the team
that makes things happen.
Contact Wendy Aldred 07968 181562



"A RESTORATION IN PROGRESS"
Contact Details; www.Kirklingtonhall.co.uk
Telephone 01228 231045
Kirklington CA6 6BB

Opening Times: 1st April-30th Sept –
Sunday to Friday - 12noon-5pm
(closed Saturdays)

Adults £4.00; Children under 16 £1.00.
Season Tickets - Single £10; Family £22.
**WALKS, SHOP, TEA ROOM, ROSES AND
PLANTS, SEASONAL – Pick Your Own Fruit.**

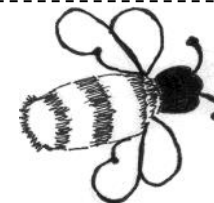
FORTHCOMING EVENTS
2nd - 4th Jun 2017 Drove t'Drink
The Call to the Hall Bikers Rally
9th – 11th Jun 2017 Stepping Stones Festival
Sat 17th Jun 2017 Verdi's "Rigoletto"
Kirkinton Opera
Sat 8th July 2017 Shakespeare's
"A Comedy of Errors"

SUDOKU

Solution on page 23

		9		7	
			7		8
		2	6		1
			5		
6		4	1		
9	2			3	
		1			
5		6		4	2
3	1				8

Eden and Lyne Buzz



From a notice in the Carlisle Patriot of Saturday 3rd June 1815.

"ROCKCLIFFE ASSOCIATION"

WHEREAS divers Felonies, Trespasses, and Misdemeanours have of late years been committed within the parish of Rockclif, and many Depredations made upon the Hedges, Banks, and Rails, of the newly enclosed Grounds there : we whose names are underwritten, DO HEREBY GIVE NOTICE, that we have Associated ourselves together for the Prosecutions of and bringing to punishment all Persons hereafter committing any Felonies, Trespasses, Depredations, Nuisance, or other Misdemeanours within the said Parish of Rockclif. A committee has been appointed for the Prosecution of all Offenders, and liberal rewards will be paid to such Persons who shall hereafter give information against Individuals who may be guilty of any of the Offences aforesaid, so that they may respectively be brought to Punishment.

Robert Mounsey	Richard Graham	Thomas Jackson	David Carrick	Mary Bell
John Cartner	John Cartner	Richard Ferguson	Robert Wilson	Henry Hewitt
Robert Nixon	James Black	John Beaty	Gavin Armstrong	Joseph Park
John Ker	Robert Edger	Jeremiah Reed	John Edger	Thomas Skelton
Henry Fenwick	George Graham	John Wilkin	John Forster	John Sinclair
George Rigg	Thomas Hewitt	Isaac Nixon	John Davidson	George Batey
William Bell	William Edger	Richard Sewell	John Blythe	Jacob Wilson
Charles Phillips	William Graham			

Rockclif 29th May 1815"

Rockcliffe (then spelt Rockclif) was not always the quiet and crime-free community it is today!

To some this list of names is redolent of that era of over 200 years before when the Reiver families regularly brought terror and destruction to their hapless neighbours of the Borderlands.

However in 1815 these were not Reivers. They were upright men and women, the yeomen of England, whose lives were being disrupted by those opposed to the Enclosure Acts (spelt Inclosure then) of the late 18th and early 19th centuries. They would take no nonsense from anyone who damaged their property. However they (hopefully) stayed within the Law. Some of those they prosecuted would, doubtless, suffer enforced emigration to Australia!

RIVERBANK LITTER PICK



On a fine Saturday morning in April, about 20 community minded stalwarts from around Rockcliffe joined in a Litter Pick along the banks of the River Eden from Redhills to the island in the Cargo direction. It took a 4 by 4 and a trailer to do three runs to bring the resultant collection back to the central collection point at the Rockcliffe Centre. Amongst the finds were filters apparently washed down river from the from the Appleby sewage works, a push chair, oil drums, a bicycle wheel, a fire extinguisher and at least 500 plastic and glass bottles and other rubbish collected in over 50 bin bags.

Thank you to all who took part.

Eden and Lyne Buzz



MILK & PAPER DELIVERY

Daily & Sunday Newspapers

Magazines & Periodicals

All Dairy Products

delivered to your doorstep

Ring or Text:

Mobile: 07932 965 618



ROCKCLIFFE SCARECROW FESTIVAL

Sunday 4th to Sunday 11th June

Tour the Village, check them out and vote for your favourite.

ENTRY £2

Deatils from Vicky Armstrong

The Joiners Shop, Redhills.

Email: vixash2@icloud.com



**Every Thursday at
10.30am**

Coffee Mornings
in the
Crown and Thistle
All Welcome

S H ELECTRICAL Electrical Contractors

- Domestic & commercial electrical installations
- Electrical testing & rectification work
- Smoke, heat & carbon detector installations
- Security lighting & alarm systems
- Electric shower installations
- Fan and ventilation system installations
- Landlord maintenance services
- TV & aerial installations
- Solar PV

**No job too large or small
Free quotations on request**



**24 HOUR CALL OUT
07771 928090**

Unit 10, Long Island Park, Carlisle, Cumbria CA2 5AS
Telephone: (01228) 631447

www.shelectricaluk.co.uk

Aero Nurseries Garden & Aquatic Centre



**Harker Rd Ends, Carlisle, Cumbria, CA6 4HQ
01228-674 612**

Between ASDA and Rockcliffe

Aero Nurseries is a traditional garden nursery with an aquatic department. Come for a visit and find in stock, Bedding and Basket plants, vegetable and herb plants, shrubs and trees, conifers, Heathers, alpine's and herbaceous plants.

We have a good range of Stoneware and pots, and stock Humax and Bord Na Mona composts. Our aquatic department has everything for your pond including fish, water plants, food, treatments, pumps and filters.

We are open Mon-Sat 9am-5pm Sun 10am-4pm.
aeronurseries@outlook.com

Eden and Lyne Buzz



www.edrobertsheating-carlisle.co.uk

SPECIALIST OIL-FIRED HEATING ENGINEER

We are a Carlisle based oil-fired engineer company specialising in heating systems, boilers and cookers.

Working across Carlisle and Cumbria,
we offer you a reliable customer focussed service.

Call 01228-522 445 for details

AGA AND RAYBURN SPACE HEATERS SERVICING AND REPAIRS
OIL-FIRED HEATING

**QUOTE PROMO CODE
BUZZ1**

**When Ordering
To Receive Free Planter
With All Orders Over £1000**



**GARDEN BUILDINGS LTD
INCORPORATING — A1-LAPFENCING**



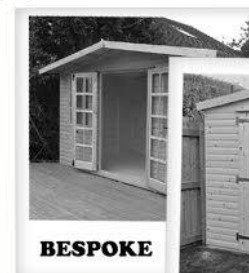
We Supply and Install Quality Garden Products



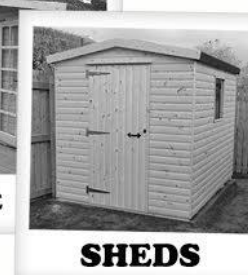
WOODEN



FENCING



BESPOKE



SHEDS



INSULATED



WORKSHOPS

**Lap Fencing
Feather Edge
Board On Board
Trellis Fencing
Pallisade Panels**

**Garden Sheds
Summerhouses
Potting Sheds
Dog Kennels
Animal Huts & Runs**

**Insulated Sheds
Insulated Garages
Insulated Workshops
Insulated Offices
Upto 100mm Insulation**

TEL: 01228 674140

EMAIL: info@harkergardenbuildings.co.uk

www.harkergardenbuildings.co.uk

CHURCH SERVICE TIMES



ROCKCLIFFE CHURCH SERVICES JUNE/JULY 2017

June		
4th	9.30am	Holy Communion
11th	9.30am	Morning Prayer
18th	9.30am	Holy Communion
25th	11.00am	Baptism Service
July		
2nd	9.30am	Holy Communion
9th	9.30am	Morning Prayer
16th	9.30am	Holy Communion
23rd	11.00am	Baptism Service
30th	United Communion at Blackford with Revd. Ferial Etherington	



BLACKFORD CHURCH SERVICES JUNE/JULY 2017

June		
4th	11.00am	Holy Communion
11th	11.00am	Holy Communion
18th	11.00am	Family Service
24th	9am to 4pm Blackford Church Gift Day	
25th	11.00am	Morning Prayer
July		
2nd	11.00am	Holy Communion
9th	11.00am	Holy Communion
16th	11.00am	Family Service
23rd	10.00am	Morning Prayer
30th	United Communion at Blackford with Revd. Ferial Etherington	

PARISH OF ST AUGUSTINE OF HIPPO

MASS TIMES

Weekends: Saturday - Vigil Mass at 6.30pm
Sunday - 10.30am
Holydays of Obligation
Vigil Mass at 7.30pm and at 9am on the Feast Day

Weekdays:

9am - Monday, Thursday and Friday
7.30pm - Wednesday
10am - Saturday
Benediction - First Sunday of the Month in Ordinary Time.



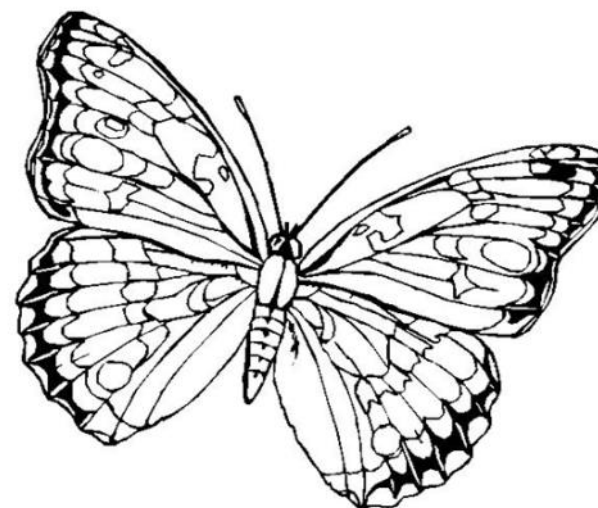
Parish Priest - Father Geoffrey Steel
01228-526765
10 Waverley Road, Carlisle CA3 9JU

ANIMALS

G E S U O M H N W R B W C W L
X D A Q H J X O O M L T H W J
B W S H N L H T P I C R A W M
Y W M E F F A R I G L K D O G
R C K R R R S Y K T H I P P O
J T O W I E F B X X L Q R J E
D R O T A G I L L A E B Z H X
T H N X P I C L F C R V Z S Z
V N H R S T H E T D R I B I Q
N Z A C S T Y X L W I N H F L
W U Q H K L J A E A U F A H F
V Q Q D P O Y K N V Q Z A T V
X M T L Q E T J Y E S Y R C H
T A C K Q C L K M O N K E Y R
P T S H W L Y E T D R A H T L

CAT HIPPO MOUSE TIGER
DOG SQUIRREL MONKEY
BIRD GIRAFFE ALLIGATOR
ELEPHANT FISH LION

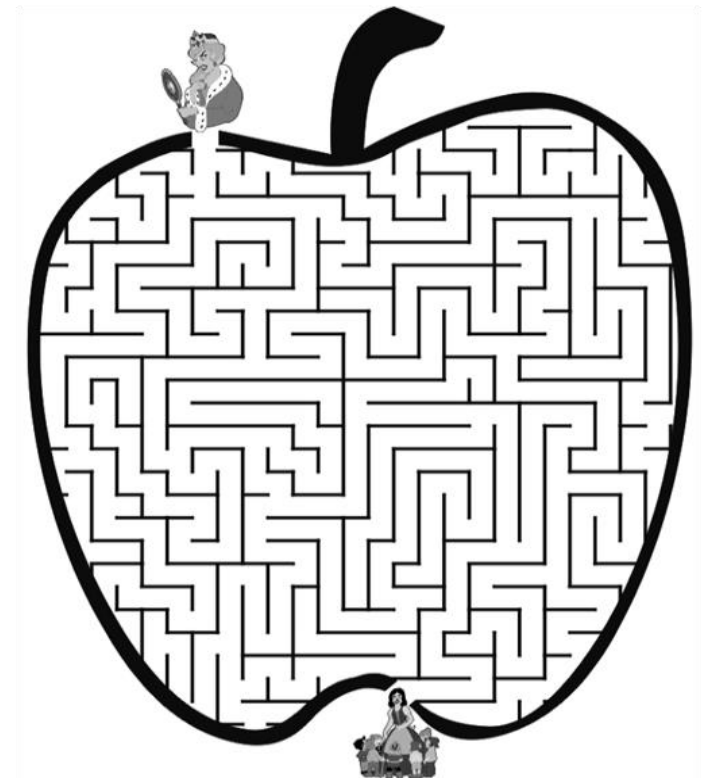
COLOUR IN THE BUTTERFLY AND ADD SOME SUMMER FLOWERS



Children's Poetry Competition for the Under 18s.

Write a poem no longer than 18 lines starting - "When I go on holiday.....£5 Book Token for the for the best entry received by 20th July. Send to edenandlynebuzz@gmail.com

WILL THE UGLY SISTER FIND CINDERELLA?



Silly animal jokes

What do you call a lazy baby kangaroo?
A pouch potato!
What do you call a bear with no teeth?
A gummy bear!!
Why did the bee get married?
Because he found his honey.
What do you call a really old ant?
An-antique!
What does a cow sound like that doesn't have any lips? "Oooo"
What's invisible and smells of bananas? Monkey burps.

Last Month we asked for a poem about Spring. There were no replies, so here's the editor's efforts!

*I love the Spring and all the **flowers**, the world is at its best. Time for the sun to **shine** and sparrows on the **nest**.*

Eden and Lyne Buzz



Mark Fraser Chimney Sweep For a Friendly Service CONTACT

07810 023819

Or

01228 791617



You are asked to support Carlisle Food Bank by leaving your donations at the back of Blackford,

Rockcliffe or St Augustine's Churches. If you wish to donate but are not able to take the items to a church, then please ask a churchgoer to take them for you.

SUGGESTED FOODBANK ITEMS

Milk (UHT or Powdered). Sugar. Soup – tinned or packet. Pasta Sauces – jars, tins or packets. Tomatoes – tinned. Rice and Dry Pasta. Pot Noodles. Cereals. Rice Pudding – tinned. Tea Bags. Instant Coffee. Tinned Meat/Fish, Baked Beans, Ravioli, Spaghetti. Jam, Marmalade, Biscuits and Snack bars



Cerebral Palsy Cumbria

Open Garden

Friday 16th June 2017

6.00-9.00pm

Hazel Cottage, Armathwaite, CA4 9PG

Tickets £10 Available from 01228 527796

HABERDASHERY

Eden Valley Hospice raises funds from Surplus and unused Silks, Wools, Cottons, Buttons, etc.

Items can be delivered to the shop in Lonsdale

Street or ring Anne on 674553 to

arrange local collection.

SALES AND WANTS?

HAVE YOU ANYTHING TO SELL OR ARE YOU ON THE LOOKOUT FOR SOMETHING? HOW ABOUT PUTTING A FREE SMALL AD IN THE NEXT EDITION? EMAIL DETAILS TO edenandlynebuzz@gmail.com



STAMPS REQUIRED FOR EDEN VALLEY AND JIGSAW CHILDREN'S HOSPICES.

YOUR USED POSTAGE STAMPS AND OLD COLLECTIONS PROVIDE A USEFUL SOURCE OF INCOME TO THE LOCAL HOSPICES. ANY DONATIONS CAN BE LEFT WITH THE HOSPICE BOOKSHOP IN LOWTHER STREET, THE HOSPICE SHOP IN LONSDALE STREET OR WITH TONY PARRINI AT HAMETHWAITE, ROCKCLIFFE CA6 4AB

PLEASE SUPPORT OUR ADVERTISERS AND MENTION "Eden and Lyne Buzz" when you do.

Eden and Lyne Buzz

The Vicarage, Rockcliffe, Carlisle, CA6 4AA

Rev'd Jan van den Berg – 01228-674209

It has been said that there are two certainties in life: the tax man and death. Subconsciously we increase this number by at least one (and this one may seem less obvious): the existence of the local Parish Church. We know that Christianity reached our shores during Roman time – there is ample evidence for that. But you may not be aware of the fact that it was in the 10th Century when our Parish system came into operation. Bishop Aethelwold (963AD) of Winchester created a group of 20 parishes in the countryside around his city. Bishop Oswald in 961AD eventually created parishes in Worcestershire and by the time we enter the Norman period this development carried on. Domesday records many hundreds of parishes in England. The Christian Church in these islands developed and as a result many thousands of Parish Churches were built in order to support the Christian populations.

You will undoubtedly be aware of the fact that there is a Parish Church in each of our two parishes: St. Mary the Virgin and St. John the Baptist. The latter was built in 1870 and the former in 1845, but on the site of a former 14th Century Christian Church. These two places of Christian worship have been faithfully served by clergy as well as laity over the many years. Most of you will remember our previous vicar, Revd. Douglas Tankard. He retired in 2003 after 14 years in office. I came in 2005 as part-time Priest in Charge. All of us have offered baptisms, marriages, burial services, pastoral services and Sunday worship for many, many years.

I was ordained in the 80's and into a Church where most clergy had one, possibly two or at most three parishes. In the '90's when I was full-time vicar of three parishes in Nottinghamshire I was kept busy, but a clergy friend of mine in Lincolnshire had 12 parishes.

However, due to a slow but steady decline in Church attendance and support for the Parish Church, things have changed. There have been many re-organisations since the '80's and the stereotypical ideal of one vicar to one or two parishes has long since gone. It is true that some Parish churches are flourishing but most are declining. In our beloved County the number of clergy is rapidly declining and very few newly ordained clergy want to come up north. By the year 2020 more than 25% of active paid Church of England clergy are expected to retire (including myself). Due to this decline the Cumbrian Church of England, together with the Methodist and United Reformed Churches recently joined together in order to seek possible ways forward; part of this process is the creation of Mission Communities. So will the current Parish Church system survive or/and will it change?? And what will it look like?

(to be continued in the next edition.)

Parish Registers

Funerals

Douglas Broughton (83) Blackford on 6th January
Nicholas John David (60) Rockcliffe on 11th January
Evelyn Mary Holden (95) Rockcliffe on 15th February
Annie Mary Wrightman (94) Blackford on 24th March
Ida Winnefred Gash (90) Rockcliffe on 29th March
Edith Mary Barbour (80) Rockcliffe on 5th May

Baptism

Mia Olivia Bradley Blackford on Sunday 19th March
Emma Malone Blackford on Easter Sunday
Erin Keelan Rockcliffe on Sunday 23rd April

OPEN GARDEN AND AFTERNOON TEA SATURDAY 8TH JULY 2017

from 2pm till 5pm

Hamethwaite, Rockcliffe CA6 4AB
£5-00 per head includes Refreshments
(Accompanied Children £2-00)
ALL PROCEEDS SHARED BETWEEN

ROTARY'S
"End Polio Now" Campaign
and the RNLI

(To replace kit lost in the Carlisle Floods)
ALL ENQUIRIES TO TONY OR ANNE PARRINI

01228-674553

Eden and Lyne Buzz

LITTLE Accounting Solutions Limited

Chartered Accountant and Chartered Tax Adviser



Expert Chartered Accountant offering a full range of
of
accountancy, tax advice and business services.
If you need an ACCOUNTANT you can really talk to.

For Professional plain speaking advice in a
straightforward manner –

CONTACT TRACY LITTLE

Year End and Management Accounts

Taxation and Planning. VAT / Payroll

Budgeting / Forecasting

Business Strategy / Development

For a FREE, no obligation discussion, contact
Tracy on 01228– 812408 Mob: 07979 550860

Or admin@littleaccountingsolutions.co.uk

WEBSITE: www.littleaccountingsolutions.co.uk

Carlisle Firewood

Barn Dried Logs and Kindling

We supply and Deliver Hard

and Soft Wood

2 Free Nets of Kindling with Your

First Trailer Load of Logs

Guaranteed “Ready To Burn”

Call Steven on 07802775792



SMITHFIELD GARAGE

Kirklington • Carlisle

Car & Van Servicing & Repairs

M.O.T.'s on Cars, Large Vans & Motorcycles

Extensive Body Shop Facilities

Tel: 01228-675467

Fax: 01228-675158

DIANE CLAPPERTON

Mobile Hairdresser
Ladies /Gentlemen



Tel: 01228 380463

Mob: 07526 465577

26 Woodlands Close Stanwix Carlisle



Depart:

Tuesday and Friday		Single fare to Carlisle
Rockcliffe School	10:30	£1.25
Cargo Bus Shelter	10:36	£1.00
Arrival: Carlisle*	10:50	
Return: Carlisle*	13:30	

*Drop off and pick up point to be agreed by passenger demand on the day

What is it?

A new minibus scheme for residents of **Rockcliffe and Cargo** providing Tuesday and Friday transport **to and from Carlisle.**

What should you do...

- Phone **01228 221055** to join.
- Wait for your Smartcard.
- Then phone **01228 226430** by 12 noon the day before you wish to travel to book your seat.

Then off you go!

As village wheels is not a registered bus service, passengers are unable to use their concessionary NoWcards.

Eden and Lyne Buzz

Local History – 50 Years On - Remembering the High Tides of 1967

Carlisle has had more than its fair share of flooding in this new century, and the 2015 floods also flooded a few houses in Rockcliffe. Older Rockcliffe residents may however recall a bigger flood, which saw its 50th anniversary this spring. The high tide of 27th February 1967 breached the defences of houses all along the river, with Ferry Cottage, Salt Cottage, Marsh View, Beckfoot, the Quarry, Methven and the Crown and Thistle all being badly flooded. As well as water damage, walls collapsed and had to be rebuilt. The Esk Boathouse was also flooded, and many, many sheep were drowned after the marsh bank was breached.

The mention of Methven, turns attention to this house which still stands beside the crown and Thistle but is currently unoccupied and somewhat down at heel. In the 1960's however it was the home of the Cormack family, Jim and Jean and their family Harry, Jim Jnr and Janet. The house was very well kept and their large garden across the way was immaculate. When Jim, a railwayman, and Jean, who worked at Carrs, retired, they moved to Carlisle and their house and garden were eventually bought by the owners of the Crown & Thistle, who turned the lovely garden into a car park for the pub.

Jim, Jean and Jim Jnr are all sadly no longer with us. Harry and Janet (now Rae) are though still in the area and known to many. Harry too worked on the railway, as well as running the local milk round and at one time running a shop in Cargo. Always a lover of the written word, Harry has penned a couple of books over the years, and it was interesting to come by this poem that he wrote following the 1967 floods. He would have been around 25 years old at the time.

'Tides' By Harry Cormack 1967

Each year she comes and falls,
The tide most feared by Rockcliffe men,
The gently flowing Eden river,
Pounds the rocks and makes them quiver,
The grassy banks becomes instead,
For half an hour, the ocean bed,
The Solway Firth so far away,
Moves inland for this one day,
With towering waves and rising level,
In her new playground she seems to revel.

As though to show who is the boss,
She turns the land into chaos,
The sleeping gardens awaiting spring,
Are swallowed up in this wild fling.
The early birds, the snow drops white,
Soon succumb to the watery might,
The animals, for slaughter fattened,
Are swept away as banks are flattened.
The households too, so proudly kept,
Are suddenly with briney swept,
The treasures of a lifetime married,
Through open door and window carried,
To sea, to land upon the shore,
As flotsam, of use no more.

And then, as if by magic stroke,
The land awakes and sheds its yoke,
The tide at once becomes becalmed,
Like a coward thug when he's disarmed,
She runs for cover of open sea,
Like Cinderella who must flee,
At the height of the ball on Midnight's stroke,
By a rule unknown to common folk,
But like a spoilt child on the run,
She's not content with what she's done.

Flood banks which she, on coming, leapt,
On her retreat are seaward swept,
The torrent warns as back she rushes,
Sweeping fences, gates and bushes,
'The time will come again when I'll return,
Swelling river, creek and burn'.
The man who does not heed this warning,
Will once again great loss be mourning!

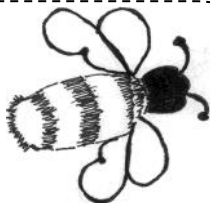
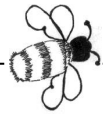


DO YOU NEED SOME EXTRA GROWING SPACE?

The Heathland's Community Garden near Rockcliffe has plots and polytunnel spaces available. No annual rental, joining fee £25.

Contact Tony on 07809-154999
for further details.

Eden and Lyne Buzz



WALKER'S

Katie Walker & Sean Crilley
Funeral Directors

24 HOUR COMPLETE SERVICE

PRIVATE CHAPEL OF REST

www.walkersfuneraldirectors.co.uk

walkersfuneral@btconnect.com

80 Wigton Road, Carlisle CA2 7AY

Tel: 01228-515650



Specialist wills, tax & probate solicitor

One of the few true specialists with over 25 yrs experience & additional specialist qualifications - large city firm experience without the high prices - has saved millions of £'s Inheritance Tax.

Lynn Emery LLB(Hons) Solicitor (TEP)

Tel: 016974 78303

Mob: 07901 229218

Email: LynnAEmery@aol.com

NM WINDOWS LTD

Window Cleaning, fascias and gutters.

Free quotes for regular
or one-off service.

Commercial or domestic work.

Water-fed pole system.

n.m.windows@live.co.uk



facebook 07787 860 217

THIS MAGAZINE WAS PRINTED BY
OPENING DOORS CUMBRIA - Lancaster Street
Carlisle CA1 1TF 01228 810888
print.room@richmondfellowship.org.uk



Richmond Fellowship is now part of **Recovery Focus**,
an expert group of charities inspiring individual recovery nationwide.

BIRDIES GARDENS

Lowry Hill

Call Andy for free
friendly estimates.

Grass Mowing, Hedge Cutting

Pressure washing,

General Garden Tidy

Mobile: 07794-509530

Tel: 01228-318809

Foot Action Saves Time

Douglas Morrison

Chiropodist Podiatrist

D.Pod M. M.Ch.S. HCPC Registered

douglas.morrison@footactionsavestime.co.uk

Telephone: 07933 493281

www.footactionsavestime.co.uk



COMPUTER SALES, UPGRADES,
INSTALLATION, NETWORKING,
FAULT FINDING AND REPAIRS

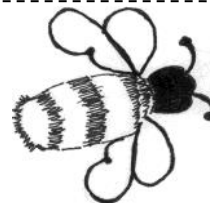
Count on us to deliver a first class
local service at one of the lowest prices.

CONTACT ANDREW MEGGS ON

Tel: 01228 547444 or 07785 743574

Email: mail@gemsoftcomputers.co.uk

Eden and Lyne Buzz



Don't lose out – share in £155,000 community benefit funding from the Beck Burn Windfarm

Is your local group or charitable organisation looking for funding? Are you an individual needing some help with funding for a training course or apprenticeship? Then apply to the BECK BURN WIND FARM COMMUNITY FUND. Applications will be considered twice a year, the next round in the Autumn.

Operated by EDF Energy Renewables, The Beck Burn Wind Farm contributes around £155,000 annually for the benefit of the communities of the Cumbrian Parishes of Rockcliffe, Westlinton, Arthuret and Kirkandrews on Esk, along with other Scottish Community Councils.

The community investment fund provides a valuable, long term, flexible and sustainable source of income which can address what is important in your community.

To find out more on fund criteria and eligibility and to download an application form visit: Cumbria Community Foundation's website

www.cumbriafoundation.org or contact Nigel Pattison on 01900 825760.

SMALL GRANTS: Both Rockcliffe Parish Council and Westlinton Parish Council will have access to funds each year. Local Community Groups can apply for small grants up to £1000, directly from their Parish Clerks: Mrs Andrea Macallum (Clerk to Rockcliffe PC) or Mrs Dorothea McKay (Clerk to Westlinton PC) – see Parish Council Page in this magazine for contact details.



HOW A SPRING CLEAN COULD SAVE YOUR LIFE!

It may be the start of summer, but you may not have had a spring clean yet. As part of the Fire Kills campaign, Cumbria Fire

& Rescue Service is asking people to clear the clutter that may be blocking escape routes and to make sure their family, guests and loved ones know how to get out, stay out, and call 999 in the event of a fire.

Working smoke alarms are regularly the heroes in a fire, giving people the warning they need to get out of their home in the event of a fire. But blocked exits, locked doors or unfamiliar surroundings can shave vital seconds from their escape time.

We all know we need to take time to test our smoke alarms, but this week make time for your home and take some simple steps to help keep your loved ones safe:

Think about how you'd all get out in case of a fire – making an escape plan and practising it will help ensure everyone gets out, stays out and calls 999.

Fit at least one smoke alarm on every level of your home so smoke can reach the alarms more quickly giving you more warning time.

Test your smoke alarms monthly - smoke alarms can save your life, but only if they work.

Clear your escape routes - make sure you're able to escape without tripping over to ensure a speedy exit.

Keep your door and window keys in a known and accessible place - make sure everyone knows where the door and window keys are kept so they can reach them easily and get out more quickly in case of

JARED STOREY CHIMNEY SWEEPS

Maintenance Services

Brian Ross

Chimney Sweep

6 Skitby Road, Smithfield,
Carlisle CA6 6AY

Tel : 01228-675311

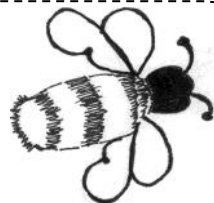
Mob: 07720 532769

Email:

brass1764@btinternet.com



Eden and Lyne Buzz



Jean Corrighan

CateringCor

Weddings, Corporate Buffets,
Christenings, Home Entertaining,
Funeral Teas, Parties,
Cookery Lessons

FOOD STANDARDS AGENCY (LEVEL 5)

9 Newfield Park
Kingstown
Carlisle
CA3 0AH

Tel: 01228 401183
Mob: 07762 012439

LAWN-ORDER

Tree and Ground Maintenance
ALL TYPES OF TREWORK UNDERTAKEN
Chainsaw Sculptures, Free Standings,
Trees removed stumps carved.
01228 711853 or 07940 562391
johnstongl@btinternet.com
Fully Insured / Free Estimates

ROCKCLIFFE TUESDAY CLUB



Retired and Want to meet new friends?

Then come and join the Rockcliffe Tuesday
Club

at the Rockcliffe Centre.

Membership Fee £12 per quarter.

PROGRAMME

June 13 – Pride of Britain award – Jim Bell
June 27 – Life Story – Charles Dunn
July 11 – Tea in Castletown's Walled Garden – 2pm
July 25 – Devil's Porridge, Eastriggs. Bus 2pm
Aug 8 – Lifeboats – Mr David Edwards
Aug 22 – Golf Hotel, Silloth, afternoon tea. Bus 2pm

**FURTHER INFORMATION FROM
ANN HAY 674553 OR WINNIE BRAND 674470**

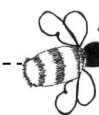
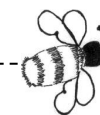
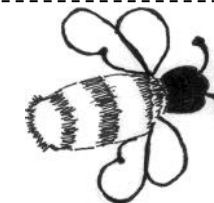
Westlinton Parish Council A.G.M. and open Meeting 16th May 2017 at 7pm in Blackord School.

Apart from the councillors and the clerk no other members of the parish attended. All the information for the meeting had been displayed on the council web site. <https://westlintonparishcouncil.wordpress.com>
Election of office bearers was the first item. Hudson Gray was re-elected Chairman and Robert Murray was re-elected as vice-chairman. The minutes of the last AGM were read and approved. There were no matters arising. The accounts for the year ending 31st March 2017 were presented and gone through. The accounts had been internally audited by an independent qualified member of the parish and the external audit form section had been filled in. The rest of the form was filled in by the chairman. This will be sent to the external auditors BDOLLP. The Risk Assessment Policy and Financial Regulations were reviewed and the newer version of these was accepted by the council.

The minutes of the last ordinary meeting were read and approved. The council has complied with The Transparency Code and has fulfilled its obligations to the satisfaction of the Pensions Regulator. Certain cheques were authorized by the council and duly signed. Various planning applications were discussed and a few highway issues were raised. The Beck Burn Wind Farm money was discussed and it was agreed to get a bid together for next year to finish the parking area at the school and the church. The local pot of £5,000 has had some suggestions but no definite applications. Hopefully as people become aware of the grant, applications will come in. For any information on this please contact the clerk Dorothea Mackay on 01228 674238 or email ian_dorothea@hotmail.com

**PLEASE SUPPORT OUR ADVERTISERS
AND
MENTION THE EDEN AND LYNE BUZZ
WHEN YOU DO**

Eden and Lyne Buzz



Mrs Elizabeth Ann Hay of Rockcliffe, receives the BEM from the Lord Lieutenant

The Lord Lieutenant of Cumbria, Mrs Claire Hensman, visited Rockcliffe on Tuesday 16th May and dropped into the Crown and Thistle Inn where the "Rockcliffe Tuesday Club" was having lunch, to present Mrs Ann Hay with her British Empire Medal which was awarded to her in the Queen's 2017 New Years Honours list. Ann received royal recognition for her many years of dedication to the community of Rockcliffe and her devotion to others. She has raised many thousands of pounds for the local Rockcliffe parish church and been responsible for arranging the flowers in the church for many years. Ann has run the indoor bowling club since the Rockcliffe Centre opened, has arranged coffee mornings for the Rockcliffe 'oldies' and has always been involved in fund raising events such as Craft Fairs, Summer Fairs, Pancake Evenings and so much more.



Ann was born in Rockcliffe and still lives in the cottage she was born. Her husband David died on Boxing Day and Ann said that she wanted to dedicate her medal to him for all his support and encouragement over many years. Despite the need for secrecy

before announcing of the award, Ann ensured that David was aware of the award before he died. "I could not have done all these things without him" said Ann, "and now I hope all of you will continue to support me in my efforts. If David was here today he would say how proud he was and envelope me in his big arms."



SEAN LEIGHTON
DOMESTIC APPLIANCE REPAIR

01228 581 655
01768 877 109
07889 060626

CONTACT US FOR

Washing machines - repairs & parts
Domestic appliances
Electrical appliances - repairs & parts
Fridge freezer repairs
Microwave ovens - repairs & parts
Tumble dryer and White goods repairs
Cookers, stoves, ovens - repairs & parts
**ALL MAKES AND MANUFACTURERS
SALES OF NEW and SECONDHAND
APPLIANCES**

WEBSITE

<http://www.seanleightoncarlisle.co.uk>
Email: info@seanleightoncarlisle.co.uk

Showroom:

Unit 14, Carlisle Enterprise Centre,
James Street, Carlisle, Cumbria, CA2 5BB

Eden and Lyne Buzz

ROCKCLIFFE PARISH COUNCIL

Parish Council meetings are held on the third Monday of every odd numbered month (Jan. Mar etc), in the Rockcliffe Community Centre at 7:30 pm.

NEXT MEETING The Annual Parish Meeting is held on the third Monday in May at 7:00 p.m. Members of the public are most welcome to attend the AGM.

Clerk/RFO to the Council

Mrs Andrea McCallum

Rockcliffe Parish Council, c/o 34 Aglionby Street, Carlisle CA1 1JP Tel: 01228 595117

E-Mail: rockcliffepc@carlisle.gov.uk

Parish Councillors

Cllr John Harper (Chairman) - Tel: 01228 674547

E mail: john50jmh@aol.com

Cllr Robert Park (Vice-chair) - Tel: 01228 674217

E mail: rpark@park-gate.co.uk

Cllr Hazel Graham - Tel: 01228 674372

E mail: paul.graham57@btinternet.com

Cllr Maurice Irving - Tel: 01228 595117

E mail: rockcliffepc@carlisle.gov.uk

Cllr Giles Mounsey-Heysham - Tel: 01228 674792 Email:

GMounseyHeysham@savills.com

Cllr S Sidgwick - via Tel: 01228 595117

E mail: rockcliffepc@carlisle.gov.uk

Geoff Moss - Tel: 01228 674327

E mail: gmoss101@aol.com

Gordon Percival Tel: 01228 595117

E mail: rockcliffepc@carlisle.gov.uk

Judith Twentyman - Tel: 01228 674441

E mail: gtwentyman@btinternet.com

COUNTY & CITY COUNCILLORS

County Cllr V Tarbitt - Longtown Division

016977 42247 E mail: val.tarbitt@cumbria.gov.uk

City Cllr J Mallinson - Longtown & Rockcliffe 01228

533746 Email: John.Mallinson@carlisle.gov.uk

City Cllr R Bloxham - Longtown & Rockcliffe 016977 42088

E mail: Ray.Bloxham@carlisle.gov.uk

Meetings Minutes and Agendas etc are available on the website at <http://www.rockcliffeparishcouncil.co.uk>

**Wanted
GOOD QUALITY
LOCAL PHOTOGRAPHS
FOR FUTURE EDITIONS**

ROCKCLIFFE PARISH COUNCIL

Chairman's Annual Report to AGM – 15th May 2017

Planning The past year has been a continuation of the previous one with an ever increase in planning applications. One application to build three hundred houses on the former M.U. site near Harker was rejected.

The big planning consultation to hit us was the proposal by North West Coasts Connections to erect super size pylons near to the village. These are needed to connect the proposed Moorside Nuclear plant to the sub-station at Harker. Originally it was proposed to follow the existing route, as it is now. The new proposals are to bring these intrusive pylons nearer to the village. We met the Planning Officer with our City and County councillors to express our concerns. Our MP Rory Stewart also met with us and said he would take on our concerns. I would like to thank those who put together the presentations that were made along with alternative routes and all those who sent in the many objections and alternatives - every one counts. I could not leave this without paying tribute to the Parish Clerk for all the hard work and many hours put in producing the excellent response on our behalf.

On planning applications if you have a concern please bring it to the Parish Council but equally important send in your concerns to the Planning department. Although our observations may carry more weight, it is still only counted as one objection.

Highway issues Lorry movement through the village has seen no reduction although there are signs erected advising that it is unsuitable for HGV's. There is still no sign at Floriston to state this. The main offenders are the aggregate tippers and foreign lorries trying to access Hespin Wood. It is evident that since the by-pass was opened the route through Rockcliffe has become a rat run to Gretna and back. We are also one of the favoured test drive routes for the many garages at Kingstown. This most concerning in winter weather as the roads beyond the village are not gritted. Although last winter was mild, a couple of test-drives spun off the road.

Due to the ever increasing operations at Hespin Wood there will be a dramatic increase in traffic. The poor state of the road will get worse. One area that is giving great concern is the road over the cliffs at Redhills. The County Council have carried out a geological survey and we await their report. I would like to draw your attention to the new way of reporting highway problems it can be found at: <http://www.cumbria.gov.uk/communications/reportafault.asp> Any councillor or resident can report items immediately using the above. There is no need to

Eden and Lyne Buzz

wait until a meeting to advise of highway issues.

Broadband I am pleased to say that most parts of the parish are now connected to Fibre Broadband.

Holiday play scheme This was again held on two days during the summer holidays, with over 30 children attending. We will be holding them again this year on Wednesday 16th and Wednesday 30th August. Look out for the leaflets that will be distributed through schools for booking details.

Grants and expenditure As in previous years we have supported St Mary's church with a grant towards the upkeep of the churchyard. The Parish Council is responsible for the grass cutting of the village green. This used to be covered by a concurrent services grant that was paid by Carlisle City Council. However, this grant has now been withdrawn and it was necessary to raise the precept. Rockcliffe Parish Council still has one of the lowest precept rates in the Carlisle district. We received grants from the Longtown and Bewcastle Forum to support the summer play scheme and various other small projects. The Parish Council will be receiving £5,000 directly from the Beck Burn wind farm. We can give grants of up to £1,000 for an approved project that will benefit the parish. There are further larger grants available via the Cumbria Community Foundation. Details are elsewhere in this edition.

Finally I would like to thank all my fellow Parish, City and County councillors for all their help and support over the last year. I would also thank all those parishioners who come to our aid, when they think they can help - the pylon issue being a prime example.

Being the clerk of a small parish council is no easy matter. The ever-increasing form filling and change of personnel you deal with must test anyone's patience. This being the case we have to thank Andrea McCallum for all her very hard work especially dealing with the pylon issue and looking after all aspects of council matters. We are extremely fortunate to have a clerk of her calibre.

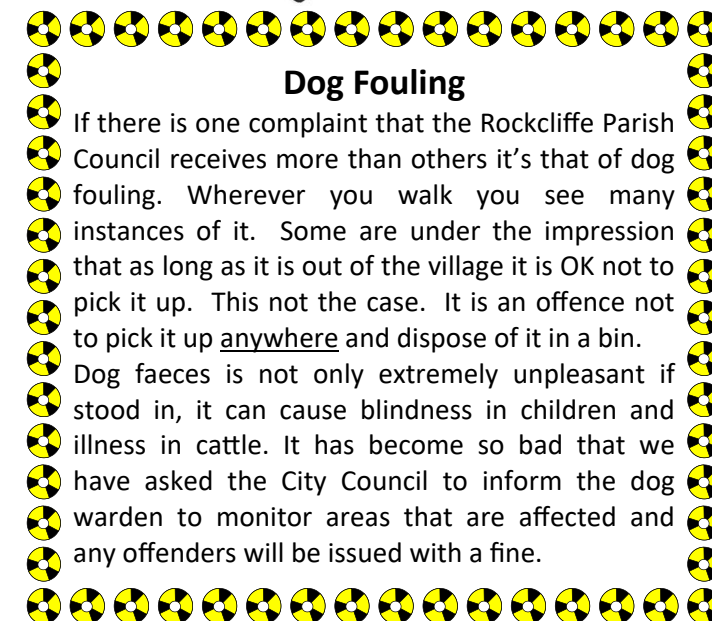
John Harper

Chair Rockcliffe PC



Cumbria Shotokan Karate

Beginner Classes at the
Rockcliffe Centre
Mondays from 6pm to 7pm
Contact Alistair on 07781 020292



Dog Fouling

If there is one complaint that the Rockcliffe Parish Council receives more than others it's that of dog fouling. Wherever you walk you see many instances of it. Some are under the impression that as long as it is out of the village it is OK not to pick it up. This not the case. It is an offence not to pick it up anywhere and dispose of it in a bin. Dog faeces is not only extremely unpleasant if stood in, it can cause blindness in children and illness in cattle. It has become so bad that we have asked the City Council to inform the dog warden to monitor areas that are affected and any offenders will be issued with a fine.



www.kingmoorparishcouncil.org

Kingmoor Parish Council has eight Councillors plus a Clerk and meets in the Rockcliffe Centre, Rockcliffe every two months, usually on the third Thursday of the month. Kingmoor Councillors are very 'hands-on' and are frequently involved in Planning site visits, meeting with City and County councillors regarding traffic calming measures, delivering leaflets, planting bulbs etc. It was as a result of the Parish Council efforts that Cargo now has a 20mph speed limit.

Cllr. Rob Graham, Chairman - Chairman

Cllr. James Ruddick, Vice Chairman - Member of Planning Working Group

Cllr. Barry Colville - Member of Planning Working

Cllr. Margaret Dickson

Cllr. Lesley Faulder

Cllr. Mike Kirkwood

Cllr. Mick Jones

Cllr. Geoff Wade

Clerk - Sonia Hutchinson Tel: 07989341147 Email:

clerk@kingmoorparishcouncil.org

WESTLINTON PARISH COUNCIL

Contact: Clerk: Mrs D V Mackay –

Tel: 01228 674238 Email: ian_dorothea@hotmail.com

SEE PAGE 14 FOR AGM REPORT