

**CROWN  
& THISTLE**

*Pub and Dining*



**CURRY NIGHT**  
EVERY THURSDAY

**Thursday Curry Club**  
CHOICE OF 3 CURRYS AND  
ALL THE TRIMMINGS FOR  
**£8**

**SUNDAY LUNCHES**  
*from £8.50*

**Tues-Thurs: 12 - 2:30PM & 5 - 10:30PM**

**Fri: 12 - 2:30PM & 5PM - 12AM**

**Sat: 12PM - 12AM Sun: 12PM - 10:30PM**

**Last Food Orders Daily at 8:45PM**

**T. 01228 674 545**

**Rockcliffe, Carlisle, CA6 4AA**  
[www.crownandthistlerockcliffe.co.uk](http://www.crownandthistlerockcliffe.co.uk)

**Ste and Jill look forward to welcoming you as we enter the Christmas and New Year Season.**

For all the details of our new Autumn Menus and forthcoming events for Christmas and New Year See our Facebook Page

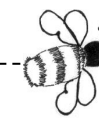
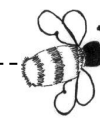
[Facebook.com/pg/](https://www.facebook.com/pg/CrownandThistleRockcliffe)

[CrownandThistleRockcliffe](https://www.facebook.com/pg/CrownandThistleRockcliffe)

**Or our Website**

[www.crownandthistlerockcliffe.co.uk](http://www.crownandthistlerockcliffe.co.uk)

**Please book your Christmas Functions early to avoid Disappointment.**



**FOR THE COMMUNITIES OF ROCKCLIFFE, CARGO, HARKER, BLACKFORD, WESTLINTON AND ALL POINTS IN BETWEEN**



**Photo by Delia Daly—The Northern Relief Road viewed from Stalnton**



# Eden and Lyne Buzz



**Coffee Mornings**  
will resume in the  
**Crown and Thistle**  
On Thursday each week  
From 5th October  
All Welcome



## LYNEFOOT KENNELS

<http://lynefootkennelsltd.co.uk>

Established in 2009 Lynefoot Kennels is a family run business. With help from a small, dedicated team, we want you to leave your dog knowing that they will receive our personal care and attention at all times.

*"Lynefoot is a friendly, family-run kennel with high standards of cleanliness and care . . . Extremely roomy indoor kennels with an outside bit . . . An exercise pen which David and his family make sure all dogs get use of throughout the day . Twice daily walks in lovely fields . . . It is reassuring to know that they make regular checks on vacs and health updates"*

Address: Lynefoot Kennels,  
Lynefoot Farm, Carlisle, CA6 6AJ  
Telephone: **01228 674 376**  
Email: [fiona@lynefootfarm.plus.com](mailto:fiona@lynefootfarm.plus.com)

## NEXT COPY DATE

The Eden and Lyne Buzz is produced 6 times a year at the start of the even months  
Feb, Apr, Jun, Aug, Oct and Dec.

Material can be sent at anytime to  
[edenandlynebuzz@gmail.com](mailto:edenandlynebuzz@gmail.com)

The final date for material for the  
December/January Edition is  
**FRIDAY 24th November 2017**

## IN THIS EDITION

Page 2	Local Events
Page 3	Chimney Fire Prevention
Page 4	Sudoku Puzzle
Page 5	Editorial
Page 6	"Red Duster"
Page 7	Rockcliffe, Blackford and St Augustine's Church Services
Page 8	Children's Page
Page 9	Rockcliffe Christmas Fair
Page 11	Blackford WI and PCC News and Events
Page 12	Blacksmith's Yard Village Well
Page 13	The Heathands project and Sloe gin season
Page 15	Rockcliffe and Westlinton Parish Councils
Page 16	Rockcliffe Parish Council Meeting
Page 17	From the Vicarage
Page 18	Rockcliffe Tuesday Club
Page 19	Village Wheels Timetable
Page 20	Rockcliffe Cricket Club and It's all change at Rockcliffe School
Page 21	Keeping fit as winter approaches
Page 22	Blackford CE Primary School, Constitution and Sudoku Solution.

## WHAT'S ON - FUTURE EVENTS

### OCTOBER

- 1<sup>st</sup> Oct Rockcliffe Harvest Festival and Supper
- 11th Oct Superfast Broadband Workshop -Page 9
- 28<sup>th</sup> Oct to 11<sup>th</sup> Nov – Poppy Appeal

### NOVEMBER

- 1st Nov Blackford Christmas Flower Show
- 4<sup>th</sup> Nov Fireshow in Bitts Park
- 12<sup>th</sup> Nov Remembrance Sunday
- 26<sup>th</sup> Nov Rockcliffe Christmas Fair

TO ADD TO THIS LIST SEND DETAILS TO

[edenandlynebuzz@gmail.com](mailto:edenandlynebuzz@gmail.com)

## DISCLAIMER

The Eden and Lyne Buzz is produced for residents in the Rockcliffe, Kingmoor and Westlinton Parish Council areas. The magazine seeks to serve the local community by including local community events, advertisements and items of local interest. Inclusion of such material in the magazine does not imply that the Trustees endorse everything that is mentioned, nor are they responsible for any inaccuracies in the information supplied.

# Eden and Lyne Buzz

## Mortgages in retirement

55 to 105 and beyond...  
there's no upper age limit on our mortgages

0800 032 3030 [cumberland.co.uk](http://cumberland.co.uk)



QUOTE PROMO CODE  
**BUZZ1**  
When Ordering  
To Receive Free Planter  
With All Orders Over £1000

**Harker**  
GARDEN BUILDINGS LTD  
INCORPORATING – A1-LAPFENCING



We Supply and Install Quality Garden Products



WOODEN



FENCING



BESPOKE



SHEDS



INSULATED



WORKSHOPS

Lap Fencing  
Feather Edge  
Board On Board  
Trellis Fencing  
Pallisade Panels

Garden Sheds  
Summerhouses  
Potting Sheds  
Dog Kennels  
Animal Huts & Runs

Insulated Sheds  
Insulated Garages  
Insulated Workshops  
Insulated Offices  
Upto 100mm Insulation

TEL: **01228 674140**

EMAIL: [info@harkergardenbuildings.co.uk](mailto:info@harkergardenbuildings.co.uk)

**[www.harkergardenbuildings.co.uk](http://www.harkergardenbuildings.co.uk)**



# Eden and Lyne Buzz

## EDEN AND LYNE BUZZ CONSTITUTION

The Eden and Lyne Buzz is a community magazine run by unpaid volunteers on a not for profit basis.

Eden and Lyne Buzz is run by a group of volunteer Trustees who, for the time being are Mr A L Parrini (Chairman and Editor), Mrs Janette Fisher (Treasurer), Mrs Judith Twentyman (Secretary) and Mrs Ann Hay (Advertising Coordinator).

The Bank Account is with The Cumberland Building Soc'ty. All payments out of the account will be by Cheque signed by the Treasurer and 2 other Trustees.

Legitimate expenses are available if requested by volunteers and Trustees if approved unanimously by the Trustees.

Eden and Lyne Buzz will be published 6 times per year.

Subscriptions and Advertising Rates will be set by the Trustees in April each year based on the financial results of the previous year's trading.

The Trustees will invite all subscribers to attend an AGM in May each year to present the accounts and agree the distribution of any surplus funds held.

### Trustees

Mrs Ann Hay, Mrs Judith Twentyman,  
Mr Tony Parrini and Mrs Janette Fisher

**EMAIL ADDRESS:** edenandlynebuzz@gmail.com

## Blackford CE Primary School

As I write, the school is already busy even though this is only the middle of the third week back. The children have settled well into the routines of their new year groups and our new Reception children seem like they have always been with us.

We will be holding an Open Day for those children starting school in September 2018 on Thursday 12<sup>th</sup> October from 2pm – 3pm. Please contact school for further details.

Our topic this term is 'Wonderful Us' and we will be learning all about ourselves and our World. The infants have already had Nurse Melissa in to visit to talk to them and show them simple first aid skills.

Our harvest festival was held on 22<sup>nd</sup> September when the children performed in church for their families and friends. A wide range of harvest gifts were brought which were then sold at the Harvest Supper on 25<sup>th</sup> September.



### 1862 City of Carlisle) Squadron

#### Royal Air Force Air Cadets

#### We are Recruiting Now!

Between ages 12 (Year 8) and 16?

Carlisle Air Cadets, Crindledyke, Carlisle, CA6 4BZ

Google 'Carlisle Air Cadets' for directions

Monday & Friday 7pm till 9.30pm

www.facebook.com/1862sqn Phone 01228 674559

Email 1862@aircadets.org



**CLOSED FOR THE WINTER  
UNTIL 1ST APRIL 2018**

## SUDOKU – Solution – See Page 4

5	7	6	3	7	9	8	2	1
7	2	1	6	8	4	3	5	9
9	3	8	1	5	2	4	7	6
2	8	9	7	6	3	1	4	5
3	7	5	4	9	1	2	6	8
6	1	4	8	2	5	7	9	3
8	5	7	2	1	6	9	3	4
4	9	2	5	3	8	6	1	7
1	6	3	9	4	7	5	8	2

# Eden and Lyne Buzz

## LIST OF ADVERTISED SERVICES

Accountants—Page 14 and 19

Air Cadets—Page 22

Boiler Servicing, Repairs and Installation—Page 14

Building Society/Bank—Page 23

Car Boot Sale—Page 2

Catering—Page 18

Chimney Sweeps—Pages 10 and 18

Chiropodist—Page 6

Coffee Mornings—Page 2

Computer Supplies and repairs etc—Page 6

Domestic Appliances Repairs and Sales —Page 14

Electrical Repairs etc— Page 14

Firewood/Logs—Page 19

Hospices—Page 10

Funeral Directors —Page 14 and 18

Garden Centre—Page 4

Garden Maintenance—Page 6

Hair Dresser (Mobile) Page 19

Indoor Bowls—Page 21

Kennels—Page 2

Legal Advice—Page 9

Milk and Newspaper Deliveries—Page 4

Plumber—Page 21

Poppy Appeal (Volunteers) - Page 9

Printing—Page 17

Public House—Page 24

Rockcliffe Centre—Page 3Page 9

Rotary Club—Page 18

Sheds and Fences etc—Page 23

Tax/Wills advice—Page 10

Tree Feller—Page 18

Tuesday Club—Page 18

Vehicle Repairs—Page 19

Window Cleaning etc—Page 6

Village Wheels—Page 19

### Chimney Fire Prevention



Many of us have solid fuel heating, open fires and log burners, all with chimneys of some description. Before they are put back into use or their use intensified as the

colder days and nights approach, it's time to have those chimneys swept and cleaned. This magazine has details of 2 local chimney sweeps which are ready to serve you. If you don't and the worst happens, working smoke alarms can give you the early warning, and a fire-plan can help you ensure your family's escape in a fire – make sure you have at least one smoke alarm on every level of your home and test them monthly. Don't keep this advice to yourself – pass it on. "People wouldn't think twice about getting their cars MOT'd, but home appliances often get neglected so I keep in regular contact with clients to remind them which they really appreciate. It might not be on the top of everyone's to-do lists, but you really can't afford to risk leaving these things unattended."

Remember also that in the event of an insurance claim as a result of a chimney fire, some insurers may want to see a receipt showing the date on which your chimney was last swept!

(With acknowledgement of the Cumbria Fire and Rescue Service).

**GET READY TO DANCE  
THE NIGHT AWAY  
TO THE  
BON ACCORDS**

**THE ROCKCLIFFE CENTRE  
SATURDAY 2ND DECEMBER  
8PM ONWARDS**

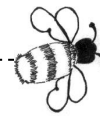
**TICKETS £5**

**CONTACT NICOLA ON: 07592563159**





# Eden and Lyne Buzz



## GRAHAMS NEWSAGENTS KINGSTOWN

has taken over the  
Newspaper and Milk Deliveries  
round from Jamie Johnston  
**All Dairy Products,  
Daily and Sunday Newspapers  
and Magazines**  
delivered to your doorstep.  
All enquiries to 01228-524797

**FAMILY FUN NIGHT & DISCO**  
By  
**STARDUST PARTIES**  
**THE ROCKCLIFFE CENTRE**  
**SATURDAY 21ST OCTOBER**  
**4PM - 9PM**  
**TICKETS £3 EACH OR £10 FOR A FAMILY**  
**CONTACT NICOLA ON 07592583459**

UNLIMITED JUICE  
UNLIMITED TEA/COFFEE  
FAMILY GAMES FOR ALL AGES INCLUDING ADULTS  
BAR OPEN FOR ANY OTHER DRINKS  
BRING YOUR OWN FOOD

## SUDOKU

Solution on page 22

8		7	4					
1			3	5				
			1		7	5		
3		7	2		4		9	
		2						
						8		
		4		1			6	
	5						7	
1				3				

## S H ELECTRICAL UK Limited Electrical Contractors

- Domestic & commercial electrical installations
- Electrical testing & rectification work
- Smoke, heat & carbon detector installations
- Security lighting & alarm systems
- Electric shower installations
- Fan and ventilation system installations
- Landlord maintenance services
- TV & aerial installations
- Solar PV

**No job too large or small  
Free quotations on request**



**24 HOUR CALL OUT  
07771 928090**

Unit 10, Long Island Park, Carlisle, Cumbria CA2 5AS  
Telephone: (01228) 631447  
[www.shelectricaluk.co.uk](http://www.shelectricaluk.co.uk)

## Aero Nurseries Garden & Aquatic Centre



**Harker Rd Ends, Carlisle, Cumbria, CA6 4HQ  
01228-674 612**

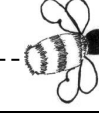
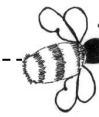
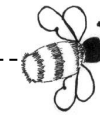
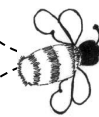
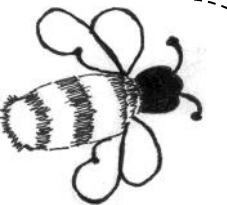
**Between ASDA and Rockcliffe**

Aero Nurseries is a traditional garden nursery with an aquatic department. Come for a visit and find in stock, Autumn/Winter Bedding Plants, herbs, heathers, alpinas, herbaceous plants and a good range of stonewear and pots. Our Christmas display includes artificial flowers, decorations and artificial trees.

Real Christmas trees and Holly wreaths are available from the end of November or wreaths can be ordered now. Our aquatic department has a range of cold-water and tropical fish with food, treatments and accessories.

**We are open Mon-Sat 9am-5pm Sun 10am-4pm.**  
[aeronurseries@outlook.com](mailto:aeronurseries@outlook.com)

# Eden and Lyne Buzz



**KEEPING FIT AS WINTER APPROACHES** – a few tips from Doctor Quynh

It may be getting colder, but winter needn't be the unhealthiest time of year for you and your family. Here are five ways to make sure that, even when your body is telling you to hibernate, you can keep healthy and fit, no matter what the weather's like.

### Banish winter tiredness

Many people feel tired and sluggish during winter. This is due to the lack of sunlight, which disrupts our sleep and waking cycles. Try these tips: get outdoors in natural daylight as much as possible, get a good night's sleep and de-stress with exercise or meditation – stress has been shown to make you feel tired.

### Eat more fruit and veg

When it's cold and dark outside, it can be tempting to fill up on unhealthy comfort food. It's important to ensure you still have a healthy diet and include five portions of fruit and veg a day. If you find yourself craving a sugary treat, try a juicy clementine or satsuma instead.

Winter vegetables such as carrots, parsnips, swede and turnips can be roasted, mashed or made into soup for a comforting winter meal for the whole family. Explore varieties of fruit and veg that you may not normally eat.

### Drink more milk

You are more likely to get a cold in winter, so make sure your immune system is in tip-top condition. Milk and dairy products such as cheese, yoghurt and fromage frais are great sources of protein, vitamins A and B12, and calcium, which helps keep our bones strong. Choose semi-skimmed, 1% or skimmed milk – rather than full-fat – and low-fat plain yoghurts.

### Try new activities for the whole family

The cold winter months aren't an excuse to stay in and lounge around. Get out with the whole family to try out a new activity – maybe ice skating, or taking a bracing winter walk. Regular exercise helps control your weight, boost your immune system, and is a good way to break the tension that can build if the family is constantly cooped up inside the house.

### Have a hearty breakfast

Winter is the perfect season for porridge. Eating a warm bowlful on a cold morning isn't just a delicious way to start your day it also helps boost your intake of starchy foods and fibre. These foods give you energy and help you feel fuller for longer, stopping the temptation to snack mid-morning. Oats also contain lots of vital vitamins and minerals. Make your porridge with semi-skimmed or skimmed milk or water. Don't add sugar or salt. Add berries or a sliced banana, or other fruit for extra flavour and to help you hit your 5 A Day target



## INDOOR BOWLS CLUB

The Indoor Bowls Club holds over £2000 worth of equipment, but needs to find new interest in running sessions to suit new members whether that be daytime or evenings. Existing members are prepared to adapt in order to sustain a local indoor Bowls Club. If you are interested in starting a new Bowls Club at Rockcliffe or helping to reinvigorate the existing Club, please let Ann Hay know (674363). **If no one comes forward by 1st December the Club will close down permanently and the equipment sold.**



## Carlisle - Plumbers



Landline 01228-494022  
Mobile 07570-040048

Find us on **Checkatrade.com**

Whether a simple tap repair or a complex bathroom remodelling, at Carlisle-Plumbers, we pride ourselves on attention to detail and customer satisfaction. Carlisle- Plumbers is committed to serving our customers with the highest quality service and professional repairs. All of the products we utilize are of the highest quality, craftsmanship and design. With Carlisle-Plumbers, you can rest assured that your plumbing and heating needs are in good hands. Carlisle -Plumbers services Carlisle and the surrounding areas.

## NO JOB TOO SMALL

Carlisle-Plumbers  
37 Parkland Avenue, Carlisle CA1 3GN  
01228-494022 or 07570-040048  
Email: [info@carlisle-plumbers.com](mailto:info@carlisle-plumbers.com)





# Eden and Lyne Buzz

## Rockcliffe Cricket Club

Before commenting on the playing side of things the highlight of Rockcliffe Cricket club this past Summer has been the English Cricket Board's Allstars initiative.

As a club we recognised that we need to develop and encourage more younger players. With this in mind we signed up to the ECB Allstars. This introduces juniors (5-9 year olds) into cricket clubs who carry out the coaching.

This was led and organised by William Wharton who signed up the club and attends various meetings. William ran the sessions every Friday night at 6pm and what a wonderful sight seeing up to 30 kids playing down at the club. Whilst the finer details of the game will come later all the kids had fun learning the basic skills of hitting the ball, catching, bowling and throwing.

The junior sessions ended with each player receiving their certificate and what's more Rockcliffe were invited to attend the Test Match against South Africa and bring ten children along. What an honour to club to be also be asked to form the players guard of honour with the flags at the start of the game. The Allstars will start again next Spring and we welcome more children down. On behalf of the club thanks must go to William Wharton, other players who regularly helped at the sessions, the parents for bringing them down (sometimes in poor weather), and the children themselves. More of the same next year please!!

### On the playing front

The club had high hopes for the 2017 season. The Saturday first team, after the near miss on Championship spot last season, were hoping to go one better. Midweek A team bolstered by some new signings and lads promoted from the B team were looking for promotion and the Midweek B team were hoping for the youth to come through and pick up some wins.

The ground was looking good, machinery all in good order. Unfortunately what wasn't good (all season) was the weather!!! In a total of 46 games, over all three teams, we lost 17 games to the weather. Worst affected was the weekend team who lost 9 games out of the 18 fixtures.

This meant no momentum or form could be found.

Despite all this we managed, with a win in our final game played against Stainton, to stave off relegation. We live to fight another season in the top flight of the Eden Valley.

The two midweek teams (A & B) finished 4<sup>th</sup> and 7<sup>th</sup> respectively in their leagues.

Highlights and standout performances were: -

- Mark Wharton established himself as a regular in the senior team (now above his Dad in the order), scoring his first fifty and being selected for County

Under 15's. He scored 250 runs for Cumbria and top scored with 74 against Lincolnshire.

- Ashley Wills – 6 wickets for 23 runs against Stainton
- William Wharton – hitting 4 fifties during the midweek season
- The club reached finals day in the Midweek cup and lost to the winners, Lanercost, in the semi-final.
- Robert Wharton won the Midweek league averages with an average of 154 (courtesy of only being out once in 7 innings)
- Graeme Cross (23) and Dave Columbi(20) taking over twenty wickets in the season.

Despite the aforementioned we still enjoyed the game and the club goes from strength to strength. Bring on 2018!

### It's all change at Rockcliffe Cof E School

Rockcliffe CE School has seen some significant changes since the summer with new staff joining the school along with our biggest ever Reception Class. Margaret Galway finally put her away her laptop after over ten years in our Reception Class and almost twenty years in the school altogether. Margaret's connections with the school stretched even further as a parent too! We said goodbye to Margaret at our leaver's service on July 20<sup>th</sup> in St. Mary's Church. This was a sad occasion but it reminded us all of the good times too!

Hayley Pieroni has since joined the school to teach our Reception Class. We all wish her well. With twenty-two Reception children and eight Nursery each afternoon, she'll certainly be busy!

Outside of the Reception Class we have a new teaching assistant, Lauren Halvorsen who joined Class Three, Caitlin Adam, a modern apprentice has joined Class Four whilst Tom Sargeant has moved from Stanwix to Rockcliffe and is teaching Class Six.

The school now has one hundred and thirty children on roll – the largest for many years. We still have a few places left in certain year groups as the school grows from a fifteen to twenty intake. If you are looking for a place then please contact the school on 01228 674631 or email [admin@rockcliffe.cumbria.sch.uk](mailto:admin@rockcliffe.cumbria.sch.uk)

Our whole school celebration assemblies will continue to be held on a Friday afternoon at 2.55pm – join us if you can, as we celebrate the work of our school and give our thanks to God.

David Hodgkiss—Head Teacher

# Eden and Lyne Buzz

## Editorial

A grant of £450 from the Cumberland Building Society covered the printing cost of the last issue and left us with £150 which "The Cumberland" didn't want returning. It has therefore been arranged and agreed by the Trustees of the Eden and Lyne Buzz to "employ" Mr Paul Tiffany to sort out material as it arrives and to lay out the pages ready for final edit and printing, saving an amateur like myself many hours getting the hang of the intricacies of "Publisher", margins, borders and photographs. Paul will be given an ex-gratia payment for each of the next 3 issues.

We are also grateful to the Westlinton Parish Council who have forwarded £500 from the Beck Burn Windfarm Fund towards the production of the magazine. We'll put this aside as the start up fund for the 2<sup>nd</sup> year of the Eden and Lyne Buzz.

If you know of anyone who is not getting the "Buzz", please tell them the good things about it and give them your copy when you've finished with it or ask your distributor to have a copy delivered.

The Editorial in the last issue when I compared "Community" with "Isolation" raised a few supportive comments and so I thought I'd move on to "Neighbourliness". There's no question that most of us would prefer to live in a friendly, peaceful neighbourhood where everybody gets along with each other and goes out of their way to help one another. While this might be a bit of an idealist hope rather than expectation, it doesn't take too much effort to ensure that your experience of living within your own neighbourhood is more pleasurable than miserable. Most of us are already carrying out some of the tips below and often without even knowing it.

**Moving into the Neighbourhood** - With the new developments springing up, it's always a good idea to introduce yourself to some of your closest neighbours as soon as you move in. Not only will they be able to give you useful advice and information about the area, you'll also be able to gain a sense of what kind of issues are particularly important to the local residents. In an established area, when a new neighbour moves into the area, try to Make Them Feel Welcome.

**Noise levels** - Excessive noise of all types is always one of the biggest sources of complaints and grumbling about a particular neighbour. Therefore be sensitive to the noise you generate within your own household and respectful of neighbours nearby. Things like Barking Dogs, loud music

and TV systems, parties, DIY projects and the like all need to be considered. Keep in mind that people are more sensitive about excessive noise levels at night.

**Pride and Care** - We don't all have the same kind of spending power even if we live on the same road, so while you might not have the latest conservatory, brand new car or can afford the latest brick paving for your drive, try to keep your property looking tidy and that you don't leave rubbish and other items such as children's toys strewn around. What some people fail to remember is that residents just don't take pride in the appearance of their own home but in their neighbourhood too.

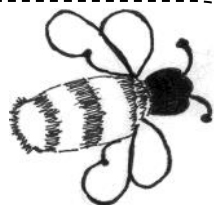
**Getting In 'The Mix'** - It's your local community so it's a chance to get out and about and mingle. Take advantage of stopping to speak to a neighbour, even if it's only to say 'Hello' as you are on your way to work or if you're simply passing them on the street as you go to the shops. Maybe even consider getting involved with some local community project or accept the odd invite to a neighbour's party. Better still, throw the odd social gathering of your own and invite the neighbours.

**You only Get Back What You Give Out** - Everybody needs a little help now and again. It may be a car engine which has stalled and the owner needs a little push to get it started, or you're asked to take in a parcel on behalf of a neighbour who is out for the day. It could be any kind of small favour actually. However, the more you give out, the more you'll get back. If people find you friendly, helpful, considerate and approachable, you're far more likely to receive a similar response from them. Don't forget the old adage "the more you look out for people, the more they'll look out for you."

**Don't Become a Gossip** - The neighbourhood 'grapevine' can often spread 'news' as fast as the speed of sound. Try to avoid getting involved in any idle gossip. Not only might 'facts' turn out to be untrue, even if they are, they're quite likely to have become distorted over the course of the 'Chinese whispers' grapevine by the time they reach you. By not getting involved in this kind of 'tittle-tattle', it prevents your name from being bandied around as a gossip monger and giving you an unwanted reputation.

These are just some useful general tips but you'll no doubt have plenty of ideas yourself about how you can become a good neighbour and make a valid contribution to your community. In this way, your experience of the neighbourhood in which you live is bound to be happier, more fulfilled and more peaceful.

# Eden and Lyne Buzz



## BIRDIES GARDENS

Lowry Hill

Call Andy for free  
friendly estimates.

Grass Mowing, Hedge Cutting  
Pressure washing,  
General Garden Tidy  
Mobile: 07794-509530  
Tel: 01228-318809



Promoting Merchant Navy Day on 3<sup>rd</sup> September, a "Red Duster" was seen flying at Rockcliffe School. If there any Merchant Seamen out there, we salute you and thank you for ensuring our exports reach their destinations and for bringing back the essentials that add to our health, pleasure and wellbeing. See [www.merchantnavyday.uk](http://www.merchantnavyday.uk) or #MerchantNavyDay for more information.

## NM WINDOWS LTD

Window Cleaning, fascias and gutters.  
Free quotes for regular  
or one-off service.  
Commercial or domestic work.  
Water-fed pole system.  
[n.m.windows@live.co.uk](mailto:n.m.windows@live.co.uk)



facebook 07787 860 217



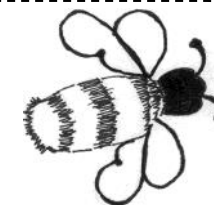
COMPUTER SALES, UPGRADES,  
INSTALLATION, NETWORKING,  
FAULT FINDING AND REPAIRS  
Count on us to deliver a first class  
local service at one of the lowest prices.  
CONTACT ANDREW MEGGS ON  
Tel: 01228 547444 or 07785 743574  
Email: [mail@gemsoftcomputers.co.uk](mailto:mail@gemsoftcomputers.co.uk)

PLEASE SUPPORT  
OUR ADVERTISERS AND  
MENTION  
"Eden and Lyne Buzz"  
when you do.

## Foot Action Saves Time

Douglas Morrison  
Chiropodist Podiatrist  
D.Pod M. M.Ch.S. HCPC Registered  
[douglas.morrison@footactionsavestime.co.uk](mailto:douglas.morrison@footactionsavestime.co.uk)  
Telephone: 07933 493281  
[www.footactionsavestime.co.uk](http://www.footactionsavestime.co.uk)

# Eden and Lyne Buzz



## LITTLE Accounting Solutions Limited

Chartered Accountant and Chartered Tax Adviser



Expert Chartered Accountant offering  
a full range of  
accountancy, tax advice and business services.  
If you need an ACCOUNTANT you can really talk to.  
For Professional plain speaking advice in a  
straightforward manner –

### CONTACT TRACY LITTLE

Year End and Management Accounts  
Taxation and Planning. VAT / Payroll  
Budgeting / Forecasting  
Business Strategy / Development  
For a FREE, no obligation discussion, contact  
Tracy on 01228– 812408 Mob: 07979 550860  
Or [admin@littleaccountingsolutions.co.uk](mailto:admin@littleaccountingsolutions.co.uk)  
WEBSITE: [www.littleaccountingsolutions.co.uk](http://www.littleaccountingsolutions.co.uk)

## Carlisle Firewood

Barn Dried Logs and Kindling  
We supply and Deliver Hard  
and Soft Wood  
2 Free Nets of Kindling with Your  
First Trailer Load of Logs  
Guaranteed "Ready To Burn"  
Call Steven on 07802775792



## SMITHFIELD GARAGE

Kirklington • Carlisle

Car & Van Servicing & Repairs  
M.O.T.'s on Cars, Large Vans & Motorcycles  
Extensive Body Shop Facilities

Tel: 01228-675467 Fax: 01228-675158

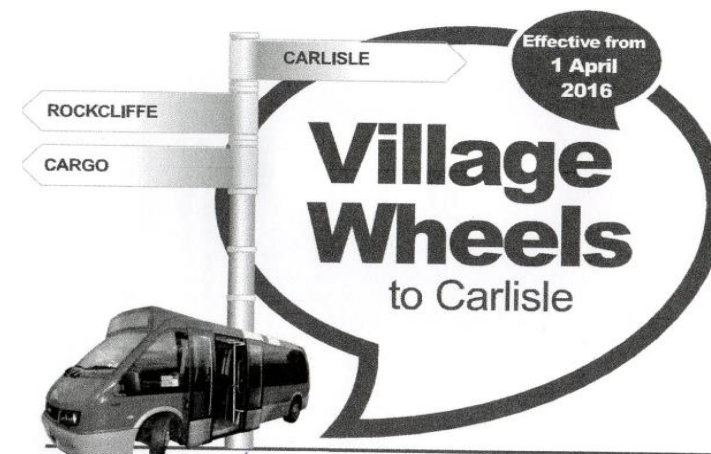
## DIANE CLAPPERTON

Mobile Hairdresser  
Ladies /Gentlemen



Tel: 01228 380463  
Mob: 07526 465577

26 Woodlands Close Stanwix Carlisle



Depart:	Tuesday and Friday	Single fare to Carlisle
Rockcliffe School	10:30	£1.25
Cargo Bus Shelter	10:36	£1.00
Arrival: Carlisle*	10:50	
Return: Carlisle*	13:30	

\*Drop off and pick up point to be agreed by passenger demand on the day

**What is it?**  
A new minibus scheme for residents of **Rockcliffe and Cargo** providing Tuesday and Friday transport **to and from Carlisle**.

### What should you do...

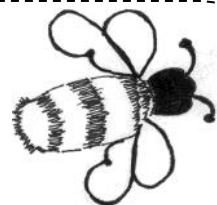
- Phone **01228 221055** to join.
- Wait for your Smartcard.
- Then phone **01228 226430** by 12 noon the day before you wish to travel to book your seat.

### Then off you go!

As village wheels is not a registered bus service, passengers are unable to use their concessionary NoWcards.



# Eden and Lyne Buzz



## ROCKCLIFFE TUESDAY CLUB



### Retired and Want to meet new friends?

Then come and join the Rockcliffe Tuesday Club at the Rockcliffe Centre.

Membership Fee £12 per quarter.

### PROGRAMME

Oct 3—Bill McClintock—Film

Oct 17—Skitby House Lunch, Bus at 12 Noon.

Oct 31—Update on Kenya . By Paul Moffat

Nov 14—The Close Shave Quartet

Nov 28—Sing a long Carols and Buffet 1.30pm

Dec 12—Christmas Lunch—Crown and Thistle 12.30

### FURTHER INFORMATION FROM

ANN HAY 674363 OR WINNIE BRAND 674470



## MAKING A DIFFERENCE IN CARLISLE AND THE COMMUNITY

Be part of the team  
that makes things happen.

Contact Wendy Aldred 07968 181562

### POETRY COMPETITION

In the last issue we invited entries from Children with a poem titled "My Holiday". We had one entry from Bobby. (Grandson of Judith Twentyman), aged 5 who wins a Token for £5 for this effort:

*My family holiday was in France.*

*The sky was blue, the clouds were white.*

*We slept in a tent*

*And the sun shone bright.*



## SEAN CRILLEY

Independent Family Funeral Directors  
78 Brook Street, Carlisle

"A Local Firm Proudly Serving  
Local Families"

For 24 Hour Personal  
Attention,

Call Sean on (01228) 544905

Private Chapel of Rest – Pre-Paid Funeral Plans

Memorial Consultants

[www.seancrilleyfuneraldirectors.com](http://www.seancrilleyfuneraldirectors.com)

Email: [sean@seancrilleyfuneraldirectors.com](mailto:sean@seancrilleyfuneraldirectors.com)

## JARED STOREY CHIMNEY SWEEPS

Maintenance Services

Brian Ross

Chimney Sweep

6 Skitby Road, Smithfield,  
Carlisle CA6 6AY

Mob: 07720 532769

Email: [bross1764@btinternet.com](mailto:bross1764@btinternet.com)



Jean Corrighan

## CateringCor

Weddings, Corporate Buffets,  
Christenings, Home Entertaining,  
Funeral Teas, Parties,  
Cookery Lessons

FOOD STANDARDS AGENCY (LEVEL 5)

9 Newfield Park  
Kingstown  
Carlisle  
CA3 0AH

Tel: 01228 401183  
Mob: 07762 012439



## LAWN-ORDER

Tree and Ground Maintenance

ALL TYPES OF TREWORK

UNDERTAKEN

Chainsaw Sculptures, Free Standings,

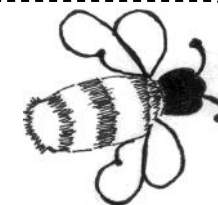
Trees removed stumps carved.

01228 711835 or 07940 562391

[johnstongl@btinternet.com](mailto:johnstongl@btinternet.com)

Fully Insured / Free Estimates

# Eden and Lyne Buzz



## CHURCH SERVICE TIMES



### ROCKCLIFFE CHURCH SERVICES

#### OCTOBER/NOVEMBER 2017

##### 1<sup>st</sup> October

9.30 am Harvest Thanksgiving

6.00 pm Harvest Supper in Rockcliffe Centre

##### 8<sup>th</sup> October

9.30 am Morning Prayer

##### 15<sup>th</sup> October

9.30 am Holy Communion

##### 29<sup>th</sup> October

10.30 am United Benefices Holy Communion with  
Rev. E. Gough at St. Mary's, Rockcliffe

##### 5<sup>th</sup> November

9.30 am. Holy Communion

##### 12<sup>th</sup> November – Remembrance Sunday

9.30 am Morning Prayer

##### 19<sup>th</sup> November

9.30 am Holy Communion

##### 26<sup>th</sup> November

10.00 am Morning Prayer

##### 3<sup>rd</sup> December

9.30 am Holy Communion



### BLACKFORD CHURCH SERVICES

#### OCTOBER/NOVEMBER 2017

##### 1<sup>st</sup> October

11.00 am Holy Communion

##### 8<sup>th</sup> October

11.00 am Holy Communion

##### 15<sup>th</sup> October

11.00 am Family Service

##### 29<sup>th</sup> October

10.30 am United Benefices Holy Communion with  
Rev. E. Gough at St. Mary's, Rockcliffe

##### 5<sup>th</sup> November

11.00 a.m. Holy Communion

##### 12<sup>th</sup> November – Remembrance Sunday

11.00 am Holy Communion

##### 19<sup>th</sup> November

11.00 am Family Service

##### 26<sup>th</sup> November

11.00 am Family Service

##### 3<sup>rd</sup> December

11.00 am Holy Communion

### PARISH OF ST AUGUSTINE OF HIPPO

#### MASS TIMES

Weekends: Saturday - Vigil Mass at 6.30pm

Sunday – 10.30am

Holydays of Obligation

Vigil Mass at 7.30pm and at 9am on the Feast Day

#### Weekdays:

9am – Monday, Thursday and Friday

7.30pm – Wednesday

10am – Saturday

Benediction – First Sunday of the Month in  
Ordinary Time.



Parish Priest – Father Geoffrey Steel

01228-526765

10 Waverley Road, Carlisle CA3 9JU



## CHILDREN'S PAGE

### Play a Tune



O	X	B	E	N	O	H	P	O	X	A	S
T	R	I	A	N	G	L	E	M	A	X	A
T	E	P	M	U	R	T	A	C	Y	F	C
K	C	J	Q	K	F	R	C	L	A	L	L
Z	O	L	H	I	I	O	O	C	O	U	A
Y	R	U	O	M	R	P	I	J	L	T	R
P	D	G	B	D	H	N	N	T	L	E	I
I	E	A	I	O	O	A	I	U	E	M	N
A	R	O	N	M	B	P	R	B	C	U	E
N	N	E	R	Z	Y	C	R	A	S	R	T
O	S	A	O	R	G	A	N	A	D	D	F
T	H	R	A	T	I	U	G	O	H	I	K

ACCORDION  
BANJO  
CELLO  
CLARINET  
DRUM  
FLUTE  
GUITAR

HARMONICA  
HARP  
MARIMBA  
ORGAN  
PIANO  
RECORDER  
SAXOPHONE

TRIANGLE  
TRUMPET  
TUBA  
XYLOPHONE



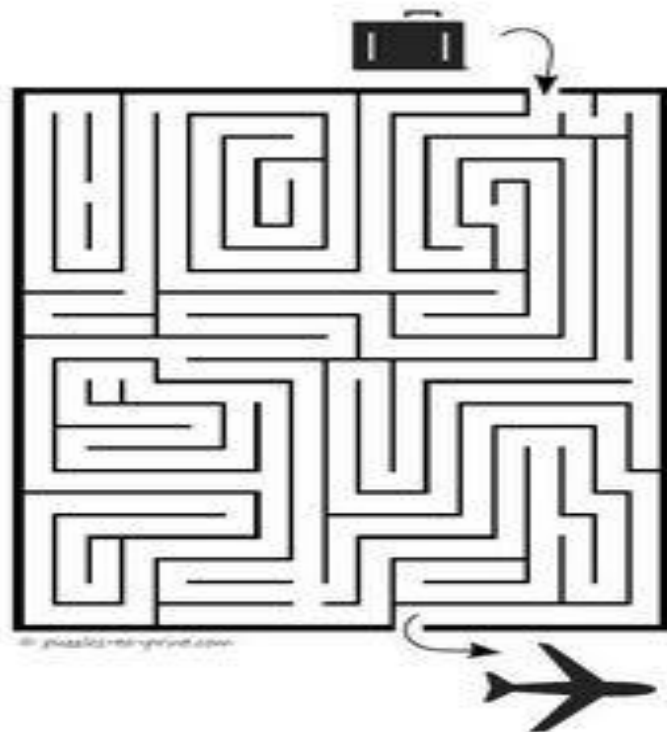
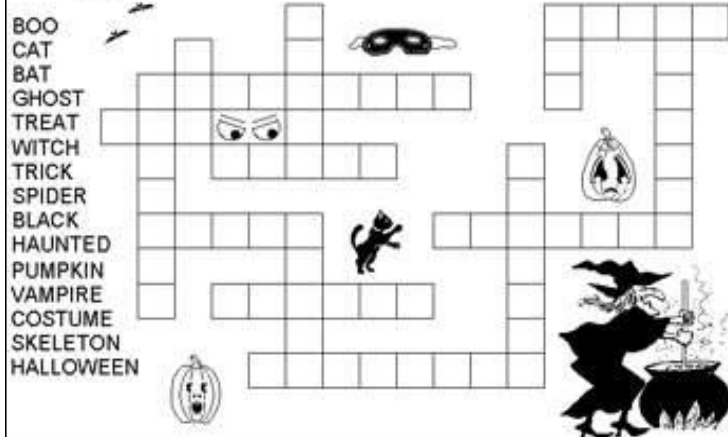
### Knock, Knock!!

Who's there?  
Witches who?

Witches!  
Witches the best way home?

### Halloween Crossword

Fit all the words into this puzzle below



### PRIZE Children's Poetry Competition for the Under 18s.

Write a poem no longer than 18 lines with the title "WINTER IS COMING". A £5 Book Token for the best entry received by 17th November. Email to [edenandlynebuzz@gmail.com](mailto:edenandlynebuzz@gmail.com) with your entry and contact details.

### HALLOWEEN JOKES

- Q: Why did the skeleton cross the road?  
A: To get to the body shop.
- Q: Why didn't the skeleton go to the ball?  
A: Because he had no BODY to go with.
- Q: What is a vampire's favourite fruit?  
A: A nectarine!
- "Mommy, everyone says I look like a werewolf."  
"Please be quiet and comb your face."
- Q: What kind of dessert does a ghost like?  
A: I scream!
- Q: When is it bad luck to be followed by a cat?  
A: When you're a mouse.
- Q: What do birds say on Halloween?  
A: Twick o tweet

## The Vicarage, Rockcliffe, Carlisle, CA6 4AA

### Rev'd Jan van den Berg – 01228-674209

'The life of mortals is like grass, they flourish like a flower of the field; the wind blows over it and it is gone, and its place remembers it no more. But from everlasting to everlasting the Lord's love is with those who fear him, and his righteousness with their children's children – with those who keep his covenant and remember to obey his precepts.'

### Words from Psalm 103

'Swift to its close ebbs out life's little day; earth's joys grow dim; its glories pass away; change and decay in all around I see; O thou who changest not, abide with.' Words by Henry Francis Lyte facing death in his mid-fifties.

The longer we live (and in my ministerial duties I have met several centenarians!) we become more aware of the passage of time. Where once birthdays seemed to come round with glacial slowness, now they flash past almost before we can take them in. The author of Psalm 103 compares a human lifespan to the swift flowering and fading of wild flowers, small flashes of colour that spring up and then disappear before winter appears. Lyte's hymn uses the imagery of the 'little day', apt words for this time of the year when, in our northern hemisphere, the autumn darkness increases day by day.

In the midst of such inescapable change and decay, we badly need the abiding presence of a Heavenly Father, whose unknowable name (YHWH in the book of Exodus) hints at eternity, at constant renewal and unstoppable and abundantly creative life. We may

feel swamped by the constant changes around us, struggling to stay afloat in this huge sea of transition and turmoil. Clinging to the unchangeable and constant love of our Heavenly Father does provide safety and peace.

The season of Remembrance focuses on preserving the memories of those whose short lives were cut short in military conflict. As the years pass, memories – like names on a war memorial – inevitably start to fade and individual faces and stories are forgotten. Someone said: 'Human forgetting is, in some ways, merciful because memories bring pain as well as joy.' – very true. I believe we never forget those who mean most to us, however long ago we may have lost them. So how can we fear that God, who loves us beyond measure, will forget about us? Remember the opening words of Lyte's famous hymn: 'Abide with me, fast falls the eventide; the darkness deepens; Lord, with me abide. When other helpers fail and comforts flee, help of the helpless, O abide with me.' (Abide – stay). This hymn reflects H.F. Lyte's deep faith in a loving God.

### From our Parish Registers

#### Holy Baptism

Zara Diana Shaw on 23<sup>rd</sup> July at Rockcliffe  
Isla Rose Mounsey-Heysham on 12<sup>th</sup> August at Rockcliffe  
Sebastian Ted Smalley on 27<sup>th</sup> August at Rockcliffe

#### Funerals

Frederica Huddart (91) at Rockcliffe followed by internment

THIS MAGAZINE WAS PRINTED BY

**PRINT OUT** Incorporating PENRITH OFFICE SUPPLIES with IRVINGS the printers

~ Carlisle's Print & Copy Specialists ~

Draw Tickets, Bingo Books, Spot the Balls, Letterheads, Business Cards, Orders of Service  
Units 5 & 6, Denton Holme Trade Centre, Carlisle CA2 5DF ~ Tel: (01228) 599979 Fax: (01228) 590150  
[printoutcarlisle@aol.com](mailto:printoutcarlisle@aol.com) ~ [www.printoutgroup.com](http://www.printoutgroup.com)



# Eden and Lyne Buzz



## Rockcliffe Parish Council Meeting - 18<sup>th</sup> September 2017

### Highways/Drainage Issues

Highway and drainage issues experienced within the Rockcliffe area were discussed at great length. The Chair reported that himself, City Cllr Ray Bloxham, Helen Renyard, Lead Officer of Development and Peter Allan Flood & Development Management Officer from Cumbria County Council had held a site meeting within Rockcliffe to look at flooding issues recently experienced. Various residents also attended and put forward their views. The three main areas discussed were Lonning Foot (above Croft Cottage), Blencarn Park and the rad at the bottom of Redhill's. At the meeting it was suggested by Cumbria County Council representatives that the Parish Council should obtain a quotation for a full drainage survey of the village to be carried out. This had now been received but the outlined costs were agreed as too cost prohibitive to progress with this option. It was also felt that if surveys are undertaken, then this work that should be carried out and financed by Cumbria County Council – not the Parish Council. It was agreed to ask County Cllr Val Tarbitt to progress this on the Parish Councils behalf.

Chairman also reported on conversations he had with Gareth Scott from Cumbria County Council Highways Department on highway concerns. These included moving the 18T weight limit sign from Lonning Foot and putting it at the entrance to the village - to deter HGV's from entering the village and having to turn around. The progression of a 7T weight limit for Rockcliffe village was also discussed with little joy and it was felt disappointing that highways did not consider this a viable option to ensure peoples safety. The Redhill's road was also discussed and he was advised that a lot of surveys had been undertaken in the area and alternative routes were currently being investigated. In conclusion, it was felt that the only positive item to come out of the discussion was that the cast-iron Wether Hill - Rockcliffe Cross road sign had been repaired and put back in its rightful place.

### The Summer Play Scheme

18 children had attended the scheme on Wednesday 16<sup>th</sup> August and 21 on 30<sup>th</sup> August 2017 - generating income of £195. Cllrs Ray Bloxham and & John Mallinson had also agreed to contribute grant funding of £300 towards the scheme. The deficit of approximately £400 would be financed from the Beckburn Wind Farm Community Fund.

### Tree Seat

It was agreed that a re-cycled plastic seat would be purchased and erected around a tree at Bunny Hill, Blencarn Park.

### Beckburn Wind Farm Community Fund

Clerk advised that a new Grants Officer will be administering the fund from September, due to Nigel Pattinson leaving in July. This had resulted in some delays being experienced in the obtaining of permissions from the Cumbria Community Foundation for grants to be paid.

### Councillor Matters

**Cllr J Harper** reported that he had received an e-mail from a resident advising on their concerns due to the speed of vehicles and HGV's on Kingmoor road. This was of concern as the resident frequently cycled with children on the road. It was agreed to investigate if a cycle lane or additional signage could be erected on this stretch of road.

**Cllr J Twentyman** requested further information regarding the City Councils announcement that a £30 charge may be levied on householders for the collection of green waste. Cllr R Bloxham advised that Carlisle City Council was looking to save over £400,000/annum through the ceasing of green collections - which is not a statutory duty. Concerns were raised as to if the discontinuation of the service would increase the amount of fly-tipping experienced in the area.

**Cllr H Graham** requested an update on when the Millennium Bridge was likely to be completed and was advised that work had been temporarily suspended to allow the recently laid concrete foundations to set, before it was finished.

**Cllr J Harper** advised that this would be his last year as Chairman and that he would be retiring from May 2018 - although he will remain as an ordinary member of the council until May 2019, to ensure a smooth handover to the new Chairman.

### Date of Next Meeting

Monday 20<sup>th</sup> November 2017

The full minutes can be found on our website [www.rockcliffeparishcouncil.co.uk](http://www.rockcliffeparishcouncil.co.uk) or via the notice boards.

*John Harper*

Chair Rockcliffe PC

# Eden and Lyne Buzz



## POPPY APPEAL VOLUNTEERS REQUIRED

The Poppy Appeal runs from 28<sup>th</sup> October until to 11<sup>th</sup> November this year.

Collectors are required at ASDA, Morrison's and ALDI, north of the City and elsewhere throughout the 2 weeks.

If you are willing to spend 2 or 3 hours whilst out shopping, or at any other time, please contact or leave a message for Colin or Margaret Wadsworth on 01228-537304

## The Rockcliffe Centre

The centre is equipped with everything you could want for your event, wedding, party or show. We have 2 rooms, of different sizes, so you can pick and choose how much of the centre you need. We also have an excellent kitchen, and if required a bar.

So if your looking for a venue for a wedding, funeral, birthday party or a sports day get in touch and get an excellent value for money quote from The Rockcliffe Centre.

### Hire Charges

Small Hall that seats approx 60 People – £8 per Hour – £10 per Hour with Kitchen

And the Main Hall that seats approx 150 People – £10 per Hour – £15 per Hour with Kitchen

Small functions like christenings etc which require the bar will be charged and extra £10 per hour.

For hire of the whole centre £150 + £50 refundable deposit.

### Wedding Packages

The centre also has various wedding packages available, for further information please contact Nicola Johnston on 01228 672116

Here at the Rockcliffe Centre we have a wide variety of activities which are available both during the day and on an evening, if you think you may like to join any please get in touch with the person who is in charge of the particular activity you are interested in.

#### Mondays

1st Rockcliffe Rainbows 5.30pm - 6.30pm contact **Vicky Armstrong** on 07495278327

Karate 6pm - 7pm contact **Alistair** on 07557029712

#### Tuesdays

Tuesday Club ( alternate Tuesdays) 1.30pm - 4pm contact **Ann Hay** on 01228 674363

Beginners Dancing 6.30pm - 9.30pm contact **Kath Hunter** on 01228 528166

Yoga Flow 7pm - 8pm contact **Dawn Whittington** on 07850076059

#### Thursdays

Dog Obedience Classes 11am - Noon contact **Sheila Hind** on

#### Fridays

Whist ( 2nd Friday of each month) 7.30pm - 10pm contact **Hazel Graham** on 01228 674372

**April Whist will be held on 21st instead of 14th due to it falling on Good Friday.**

If you run or know someone who runs an activity and you think the Rockcliffe Centre is a good venue to hold it then please contact **Nicola Johnston** on 01228 672116 to see what days and times are available.

### Specialist wills, tax & probate solicitor

One of the few true specialists with over 25 yrs experience & additional specialist qualifications - large city firm experience without the high prices - has saved millions of £'s Inheritance Tax.

Lynn Emery LLB(Hons) Solicitor (TEP)

Tel: 016974 78303

Mob: 07901 229218

Email: [LynnAEmery@aol.com](mailto:LynnAEmery@aol.com)

### Rockcliffe Christmas Fair

Subject to the outcome of a meeting of the Rockcliffe PCC Meeting on 18<sup>th</sup> October, it is hoped that organisers will be found to organise the

### Rockcliffe Christmas Fair

on

**SUNDAY 26<sup>th</sup> NOVEMBER**

**in the Rockcliffe Centre**

**starting at 2pm.**

The doubts have arisen due to the family commitments of Mrs Ann Hay who sought a replacement in the last issue. (There was no response!!) Hopefully Louise Pollock and Judith Park will be able to pull everything together in Ann's absence, but more help to organise this event and future fund raising events in Rockcliffe is URGENTLY needed. Please contact the Vicar on 01228-674209 with any offers of help.

**PLEASE SUPPORT  
OUR ADVERTISERS AND  
MENTION**

**"Eden and Lyne Buzz"  
when you do.**



# Eden and Lyne Buzz



**ROCKCLIFFE ATHLETIC FOOTBALL TEAM  
1922-23**

**CAN ANYONE PUT A NAME TO ANY OF THE PEOPLE IN THE PHOTO ABOVE PLEASE.**



**Mark Fraser**

**Chimney Sweep**

**For a Friendly Service**

**CONTACT**

**07810 023819**

**Or**

**01228 791617**



## **STAMPS REQUIRED FOR EDEN VALLEY AND JIGSAW CHILDREN'S HOSPICES.**

**YOUR USED POSTAGE STAMPS AND  
OLD COLLECTIONS PROVIDE A USEFUL  
SOURCE OF INCOME TO THE LOCAL  
HOSPICES.**

**ANY DONATIONS CAN BE LEFT WITH  
THE HOSPICE BOOKSHOP IN LOWTHER STREET,  
THE HOSPICE SHOP IN LONSDALE STREET  
OR WITH TONY PARRINI  
AT HAMETHWAITE, ROCKCLIFFE CA6 4AB**

## **HABERDASHERY**

**Eden Valley Hospice raises funds from Surplus  
and unused Silks, Wools, Cottons, Buttons, etc.  
*Items can be delivered to the shop in Lonsdale  
Street or ring Anne on 674553 to  
arrange local collection.***

# Eden and Lyne Buzz

## **ROCKCLIFFE PARISH COUNCIL**

Parish Council meetings are held on the third Monday of every odd numbered month (Jan. Mar etc), in the Rockcliffe Community Centre at 7:30 pm.

**NEXT MEETING** The Annual Parish Meeting is held on the third Monday in May at 7:00 p.m. Members of the public are most welcome to attend the AGM.

### **Clerk/RFO to the Council**

**Mrs Andrea McCallum**

Rockcliffe Parish Council, c/o 34 Aglionby Street,  
Carlisle CA1 1JP Tel: 01228 595117

E-Mail: [rockcliffepc@carlisle.gov.uk](mailto:rockcliffepc@carlisle.gov.uk)

### **Parish Councillors**

**Cllr John Harper** (Chairman) - Tel: 01228 674547

E mail: [john50jmh@aol.com](mailto:john50jmh@aol.com)

**Cllr Robert Park** (Vice-chair) - Tel: 01228 674217

E mail: [rpark@park-gate.co.uk](mailto:rpark@park-gate.co.uk)

**Cllr Hazel Graham** - Tel: 01228 674372

E mail: [paul.graham57@btinternet.com](mailto:paul.graham57@btinternet.com)

**Cllr Maurice Irving** - Tel: 01228 595117

E mail: [rockcliffepc@carlisle.gov.uk](mailto:rockcliffepc@carlisle.gov.uk)

**Cllr Giles Mounsey-Heysham** - Tel: 01228 674792 Email:

[GMounseyHeysham@savills.com](mailto:GMounseyHeysham@savills.com)

**Cllr S Sidgwick** - via Tel: 01228 595117

E mail: [rockcliffepc@carlisle.gov.uk](mailto:rockcliffepc@carlisle.gov.uk)

**Geoff Moss** - Tel: 01228 674327

E mail: [gmoss101@aol.com](mailto:gmoss101@aol.com)

**Gordon Percival** Tel: 01228 595117

E mail: [rockcliffepc@carlisle.gov.uk](mailto:rockcliffepc@carlisle.gov.uk)

**Judith Twentyman** - Tel: 01228 674441

E mail: [gtwentyman@btinternet.com](mailto:gtwentyman@btinternet.com)

## **COUNTY & CITY COUNCILLORS**

**County Cllr V Tarbitt** - Longtown Division

016977 42247 E mail: [val.tarbitt@cumbria.gov.uk](mailto:val.tarbitt@cumbria.gov.uk)

**City Cllr J Mallinson** - Longtown & Rockcliffe 01228

533746 Email: [John.Mallinson@carlisle.gov.uk](mailto:John.Mallinson@carlisle.gov.uk)

**City Cllr R Bloxham** - Longtown & Rockcliffe 016977  
42088

E mail: [Ray.Bloxham@carlisle.gov.uk](mailto:Ray.Bloxham@carlisle.gov.uk)

Meetings Minutes and Agendas etc are available on the  
website at <http://www.rockcliffeparishcouncil.co.uk>

***Wanted  
GOOD QUALITY  
LOCAL PHOTOGRAPHS  
FOR FUTURE EDITIONS***

## **Westlinton Parish Council**

In their August meeting Westlinton Parish Council were joined by Ray Bloxham (City Councillor) and Val Tarbitt (County Councillor). Minutes of the last meeting were read and approved and matters arising were dealt with. The clerk asked for authorisation of cheques to cover the PAYE admin and the pension scheme set up.

Beckburn Wind Farm had had an official opening but Westlinton didn't receive notification of this although EDF assured us one had been sent. The first round of applications had been discussed and some had been approved and others rejected. The 8 panel members vote on each and the majority decision counts. The PC then discussed suggestions for £5,000 given to the parish. A local resident had submitted some written suggestions and came to the meeting. No formal applications have been received but suggestions included replacing the bus shelters that have seen better days, replacing the milestones that have been wrecked by verge cutting on the A7, litter bins at the bus stops and the school, a grit box at the bridge at Newtown, street lighting at Westlinton, money towards Eden and Lyne Buzz, money towards children's presents at the Christmas Fair and purchase of new crockery for Blackford W.I. It was decided that Eden and Lyne Buzz should receive £500 in sponsorship. The clerk will get information on bus shelters and grit box and RB suggested she contact Arthuret parish as they have recently upgraded their bus shelters. Prices for milestones will be sought and details about money needed for presents will be got. RB said that he would fund the W.I. crockery from his small pot of money. It was felt that street lighting was a highway issue rather than a parish council matter. Westlinton Parish have put a bid in for the big pot of money to finish the parking area opposite the school and church.

The next panel meeting is in October. Highway issues raised were the deterioration in the road surface through Newtown and the faded white lines. VT said she would raise these matters with the Highway Dept. Complaints had been received about the number of HGVs using the road past the school but many farms get deliveries by HGV but this will be monitored. A planning application had been received for a battery storage system next to the Harker Sub-station so that solar energy could be stored and fed into the grid rather than turn off wind turbines.

## **WESTLINTON PARISH COUNCIL**

Contact: Clerk: Mrs D V Mackay –

Tel: 01228 674238

Email: [ian.dorothea@hotmail.com](mailto:ian.dorothea@hotmail.com)



# Eden and Lyne Buzz



[www.edrobertsheating-carlisle.co.uk](http://www.edrobertsheating-carlisle.co.uk)

**SPECIALIST OIL-FIRED HEATING ENGINEER**

We are a Carlisle based oil-fired engineer company specialising in heating systems, boilers and cookers.

Working across Carlisle and Cumbria, we offer you a reliable customer focussed service.

**Call 01228-522 445 for details**

AGA AND RAYBURN SPACE HEATERS SERVICING AND REPAIRS  
OIL-FIRED HEATING

**Brodie**  
Accountancy and  
Tax Services



Martin Brodie - Chartered Accountant  
A personal approach to dealing with your  
accountancy and tax needs.  
Call 01228 818269 or 07912 617868  
For a free no obligation quote  
[www.brodieaccountancy.co.uk](http://www.brodieaccountancy.co.uk)



**SEAN LEIGHTON**  
DOMESTIC APPLIANCE REPAIR

01228 581 655  
01768 877 109  
07889 060626

**CONTACT US FOR**

Washing machines - repairs & parts  
Domestic appliances  
Electrical appliances - repairs & parts  
Fridge freezer repairs  
Microwave ovens - repairs & parts  
Tumble dryer and White goods repairs  
Cookers, stoves, ovens - repairs & parts  
**ALL MAKES AND MANUFACTURERS  
SALES OF NEW and SECONDHAND  
APPLIANCES**

**WEBSITE**

<http://www.seanleightoncarlisle.co.uk>  
Email: [info@seanleightoncarlisle.co.uk](mailto:info@seanleightoncarlisle.co.uk)

**Showroom:**

Unit 14, Carlisle Enterprise Centre,  
James Street, Carlisle, Cumbria,  
CA2 5BB

# Eden and Lyne Buzz

**theWI**  
INSPIRING WOMEN

**BLACKFORD W.I.**

**MEETING MONDAY 11<sup>TH</sup>**

**SEPTEMBER 2017.**

Linda Davidson, president, welcomed 10 members to our September meeting. Apologies were received from Marjorie.

The minutes of our last meetings were read by our President, approved and signed. Various items were read out from the County News. Our treasurer has paid the public liability insurance premium. A list of speakers was noted.

The invitation from Hallbankgate W.I. to join them on 28<sup>th</sup> September was discussed and names taken. Four members will be attending Lowry Hill W.I. on 18<sup>th</sup> October. Names were taken for members wishing to join Longtown W.I. to celebrate their 90<sup>th</sup> birthday at Skitby House on 13<sup>th</sup> November.

Because we will be out on our usual meeting night we have decided to hold our AGM in December. Our president and secretary will provide supper. Members were interested in returning to Skitby House for Christmas Lunch once again.

We have been asked to help with the Poppy Appeal in Asda once again and the rota was passed around.

Our speaker, Karen McLaughlin with her daughter, was introduced and we were given a rag rug demonstration. We were shown many lovely rugs and other items made by the same method. Mrs McLaughlin described how she got started and has been an avid crafter for many years. Linda gave the vote of thanks. Refreshments were served.

The competition for a necklace was won by Linda Fitzimons, Isabelle won the raffle prize which was donated by our speaker, with Barbara getting the 2<sup>nd</sup> prize.

As there was no further business and it being quite early we then went on to hold a Committee Meeting finishing just before 10pm. In October we have Mrs Farmer with her collection of egg cups.

**St John's Church, Blackford**

**St John's Church, Blackford – Flower Rota 2017**

We have very skilled flower arrangers who will be happy to arrange flowers in Church on your behalf. If you would like to supply flowers or ask the flower committee member to buy them on your behalf for a special commemorative day please contact the committee member on the rota to discuss your needs and prices.

Please contact

October: Mrs J Coulthard: 07917274476

November: Mrs F Kay: 674066

December: Mrs J Wharton: 674104

**Blackford PCC Christmas Fayre**

Saturday  
25th November 2pm  
Blackford School  
Refreshments  
Tombola, Raffle & Stalls  
Santa's Grotto 3pm



Join Blackford PCC for a  
'Touch of Christmas'  
Enjoy food, wine, sparkle and  
Flowers by John Dalton  
Wednesday 1st November  
Blackford Church  
7pm



Tickets £10 available from:  
Grace 674006 Joan 792775  
Barbara 674383 Joan 07810730093

**Superfast Broadband in Cumbria**  
**Rockcliffe Centre**  
**Wednesday 11th October at 7pm**

Connecting Cumbria is running a Digital Inclusion programme to make people aware how better internet access can help deliver real economic, business and social benefits. This is getting more important as economic and demographic trends across Cumbria are not optimistic and raise significant challenges for us:

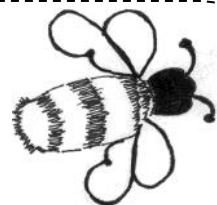
- Cumbria is the only region in the UK where the population is forecast to decline over the next 20 years.
- 28% of the working population in Carlisle is earning just the living wage (or less).
- Working Population is declining (by 11% over the next 20 years).
- More people under 30 are leaving Cumbria than staying.
- We are getting older and need more support- the number of people 65+ will increase by nearly 50% and half of people over 65 have a disability or special healthcare needs.

Rockcliffe Parish Council and Connecting Cumbria are organising a Digital Inclusion event, so that people and business in our community are aware of what's happening with superfast availability, how to get the best deals and the real benefits of the internet. To book a place (or ask any questions) contact [info@connectingcumbria.org.uk](mailto:info@connectingcumbria.org.uk), or just turn up on the night.





# Eden and Lyne Buzz



## Blacksmith's Yard - Rockcliffe Village Well

During recent extensive reconstruction and re-surfacing of the courtyard at Beckside, formerly known as Blacksmith's Yard, the location of a well which was used by residents in the locality from the 1850's was re-discovered. Beckside is a vernacular building of clay dabbin construction originally built in the late 17<sup>th</sup> century as a farmhouse of the longhouse derivative type. The adjoining property, 1 Beckside Cottage was formerly the byre. Both properties have since been modified by the addition of a first floor that initially served the purpose of loft for hay



and then for farm workers accommodation. The property called The Old Forge was built in 1856/57 as a cottage and blacksmith's shop in the Yard at the southern end of the Beckside buildings.

The buildings fronting the road through the village were built around the same time as stables for the horses.

In 1842, Beckside Farm was united into what became known as Town Head Farm. The farm buildings and cottages surrounding Blacksmith's Yard were converted into 3 residences that have subsequently assumed their present form.

A reference to the existence of the well is made in the Annals of Rockcliffe, a border village, by Harold Richardson that states;

*"Other than farms of course, a number of wells were dotted around the Parish and one in the then Blacksmith's Yard was used by many neighbours".*

Unfortunately, the well was found to have been filled in by a previous development of Beckside and it was decided, in the interest of safety, to cover it up again.

However, as can be seen from the photographs, the location and size has been fully documented should a need in the



future arise for it to be located again. Thanks go to Geoff and Kerry Moss, Karen Chandler and other friends and neighbours for continuing to retain the character of Blacksmith's Yard and the surrounding area, thereby helping to retain the unique heritage of Rockcliffe Village.

*Therese and Stephen Sidgwick*

The following references are acknowledged -

*Annals of Rockcliffe, a border village; parts 1,2 and 3: Harold Richardson 1970.*

*Clay Dabbinns, Vernacular Buildings of the Solway Plain: Nina Jennings 2003.*

*Heritage Cartography, Victorian Maps; Rockcliffe 1865.*

## HAS ANYONE GOT ANY OLD PHOTOS OF THE WELL FROM YEARS GONE BY? Editor

### COMMUNITY FRUIT ORCHARD

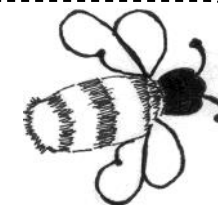
Located just beyond the Rockcliffe Centre Car Park, enter via the Kissing Gate in the top left hand corner.  
**HELP YOURSELF TO APPLES, DAMSONS, PEARS ETC.**



[www.kingmoorparishcouncil.org](http://www.kingmoorparishcouncil.org)

Cllr. Rob Graham, Chairman  
Cllr. James Ruddick, Vice Chairman  
Cllr. Barry Colville, Cllr. Margaret Dickson,  
Cllr. Lesley Faulder, Cllr. Mike Kirkwood,  
Cllr. Mick Jones, Cllr. Geoff Wade  
Clerk - Sonia Hutchinson Tel: 07989341147  
Email: [clerk@kingmoorparishcouncil.org](mailto:clerk@kingmoorparishcouncil.org)

# Eden and Lyne Buzz



## THE HEATHLANDS PROJECT

Many people who drive along the road from ASDA to Rockcliffe will have driven passed this sign and may have wondered what "The Heathlands Project" is all about.

The Heathlands Project offers services for adults with disabilities and mental health difficulties, training and support towards employment in the care field, community integration activities and events, anti-hate crime sessions for schools, student and volunteer placements. The ethos of the project is to provide a stimulating environment enabling motivation and progress for the Service Users who utilise the facilities.

Heathlands was originally part of the Glenmore Trust and has occupied the former Heathlands Farm for about 8 years, prior to which a day service was provided elsewhere. In 2013, the Glenmore Trust recognised that the Heathlands Project would be better placed to access charitable funds and donations and be in a better position to help other vulnerable groups if they were independent of the Glenmore Trust.

The Heathlands Project is now managed by The Laurie Brewis Trust (LBT), a charity that works with vulnerable and "hard to reach" groups in and around Carlisle. With trained and experienced staff, the Trust enables people to reach their potential, whatever the disability or personal issue, through individual development plans that are prepared at Heathlands. The LBT supports individuals to make positive decisions about their lives that can lead to further education, training and employment as well as having a major impact on their personal circumstances.

There are about 100 Service Users who spend at least one day a week at Heathlands; the average daily attendance is 45 service users peaking to about 60 on occasions. The activities offered include Media and IT Studies, Cookery, Craft and Performing Arts, Life Skills, Sport and a range of qualifications for disabled people.

There are many other facets to the work of the Heathlands Project. Each year students on Social Care and Occupational Therapy Courses at Carlisle College and the University of Cumbria, trainee teachers as well as a range of other students complete their job placements at Heathlands. Some police probationers attend as part of their training to gain a better understanding of people with special needs and learning disabilities. Another great success has been The Care Academy which has taken people with their own personal issues such as unemployment, mental health difficulties, drug or alcohol misuse and given them the opportunity to gain an understanding and to train and qualify for employment in social care. This has been a great success and most of the 30 people who have completed the programme have found employment.

Heathlands has a large number of volunteers who freely give their time to help with activities or provide support to the project. In addition to those who work "hands on", local people are invited to join the Community Gardens group, who, in return for the use of crop growing space, keep the grass cut, trees pruned and windows cleaned.

The Heathlands Project has just celebrated its 10<sup>th</sup> Anniversary and to some degree is a victim of its own success, so much so that decisions need to be made about expansion, modernisation and development of the buildings and infrastructure of Heathlands over the next few years. This has been brought about because of the increased life expectancy of certain groups and the fact that more people in Cumbria are dependent on a reducing number of day care facilities.

So next time you pass the sign, remember that there's some excellent work going on a few hundred yards away, where we try to improve the lives of a growing sector of our community and consider whether you might be able to help the project in some way.

For more information contact us on 01228-674950 or find us on Facebook

x x x x x x x x x x x x x x x x x x

## SLOE GIN SEASON

If you want your 2017 Sloe Gin to be ready for Christmas and the traditional New Year's Day Sloe Gin Competition (More Details in Next Issue), now is the time to start locating your sloe's. Sloe Gin takes about 2 months to mature so it needs to be settling before the end of OCTOBER. The rules for Sloe Gin Competition are simple – pick them within the Rockcliffe Parish Boundary (If possible) and make a fresh brew ready for the New Year.

**THERE ARE NO PERFECT RECIPES**, but here's one you might wish to follow:

### INGREDIENTS

500g Ripe Sloes  
250g Golden Caster Sugar  
1 Litre Bottle of Gin

### METHOD

1. Rinse and pick over the sloes, then pat dry in a clean tea towel. Using a stainless-steel fork or cocktail stick, prick the sloes and tip into a 2-litre Kilner jar, or divide between 2 smaller jars.
2. Add the sugar and gin, and seal the top. Shake well. Each day for a week, give the jar a good shake, then put it in a cool, dark place and leave for 2-3 months.
3. Line a plastic sieve with a square of muslin, set over a bowl, and strain the sloe gin through it. Decant into clean, dry bottles, seal and label. The sloe gin is now ready to drink but will improve and mature over time.
4. Don't drink it all at once!!!

