



# the **play inspection** company

---

## Annual Inspection

King Moor Parish Council

King Moor Parish Council

Cargo Village, Carlisle, Cumbria, CA6 4AR



**API** Associate



Unit 5, Glenmore Business Park, Blackhill Road, Poole, Dorset, BH16 6NL  
t- 01202 590675 e- info@playinspections.co.uk

[www. playinspections .co.uk](http://www.playinspections.co.uk)

## RPII Inspection Methodology

This document outlines the RPII position on inspections undertaken by the Inspectors listed on the RPII Register of Inspectors for Indoor Annual, Outdoor Annual, Outdoor Operational and Outdoor Routine.

Inspections are undertaken with reference to the standards listed in this preamble only; where no date for the standard is given it the date of the standard will be that current at the time of inspection with the exception of where overlap periods are granted by the standards committee when standards are updated. The information contained in reports is provided to assist the owner/operator in fulfilling their responsibilities as detailed in the relevant standard. Other standards referenced within the listed standards do not form part of the inspection.

The following standards are relevant to all installations of equipment that are publicly accessible to users; this would include public parks, pay and play parks, schools, nurseries, public houses, holiday parks, indoor play centres, farm parks etc. All equipment used or employed in publicly accessible areas should meet with the requirements of the relevant standards (listed below);

BS EN 1176 Parts 1, 2, 3, 4, 5, 6, 10 & 11 Playground equipment intended for permanent installation outdoors & indoors.

BS EN 1176 Part 7 - 'Guidance on Installation, Inspection, Maintenance and Operation' (this document gives guidance to the owners/operators of the facility on the installation, inspection, maintenance and operation of playground equipment, including ancillary items).

Domestic play equipment falls outside of the scope of BS EN 1176 and has its own standard (BS EN 71 – Safety of Toys). Where domestic equipment can be identified this will be acknowledged in the report but any comments concerning compliance within the inspection will still refer to BS EN 1176.

Other equipment that is not clearly identified as unsupervised or domestic (natural play, self-build equipment etc.) will be assessed for compliance with the relevant standard listed below:

**BS EN 15312** - Free access multi-sports equipment

**BS EN 14974** - Skateparks

**BS EN 16630** - Permanently installed outdoor fitness equipment

**BS EN 16899** - Parkour equipment (plus RPII/API guidance notes)

Annual and Post Installation inspections will take into consideration compliance with current standards and defects related to wear and vandalism. Items not listed in the report have not been included in the inspection. The inspection will cover the playground equipment and the active area up to 3.0 metres around, or the fence line if closer.

Operational inspections only take into consideration defects related to wear and vandalism. Routine visual inspections (if undertaken) relate only to the most obvious defects such as broken or missing parts, vandalism and issues created by severe weather conditions (the intention is to identify hazards created by storm damage).

The inspection is non-dismantling, non-destructive and does not include for any structural, toxicology or impact assessments defined in the standard; however, the inspector will undertake a manual test for stability and if equipment fails under manual load, or any other hazard is identified as an unacceptable risk, the owner/operator will be notified as soon as practicably possible.

The inspector will access all standing surfaces as necessary on the equipment and assess all parts up to 2.5m above the standing surface. Where it is not possible to access parts of the equipment without employing an alternative means of access the report will record the action required by the owner/operator to ensure the continued safe use of the equipment. Ancillary equipment will be assessed using the inspector's knowledge and experience of the standards named in this document to ensure as far as is reasonably practicable the continued safe use of the items concerned. The owner/operator is responsible for the overall safety of the equipment and area. Inspectors who are trained to use ladders may use them where it is safe to do so, but if members of the public are present on-site ladders may not be used to access the equipment.

The inspector will not undertake any of the following works unless specifically agreed in writing at the time of order:

Checking the depth and underlying structural integrity of any surface areas and/or carrying out any testing of impact absorbing properties of any surfaces. The identification of any corrosion, rot or other deterioration in any apparatus or equipment other than by an external inspection or the inspection of any equipment (or part thereof) that is underground. Tightening any bolts, hinges or other fixing devices on any apparatus or equipment. Assessing or inspecting any electrical installations contained on any site and/or apparatus and/or equipment. Assessing or inspecting any water supplies and/or water features and/or any associated computerised systems (including carrying out any programming).

Where planting or trees are mentioned in the report no aboricultural or horticultural assessments of toxicity, suitability or condition are undertaken; the owner/operator should have suitable inspections provided by a competent person.

The owner/operator should have a 'design risk assessment' provided by the manufacturer/designer of the area for the equipment and location in which the facility is installed.

The operator is responsible for managing risks of their provision and is required by law to carry out a 'suitable and sufficient assessment' of the risks associated with a site or activity and this inspection shall be considered as contributing to the operator's discharge of this responsibility.

The details contained within the report are a snapshot of the condition at the time of inspection only and subsequent events may affect the condition of the facility. Suggested remedial actions are based on the knowledge and experience of the inspector and/ or that of the inspection company. The owner/operator should seek the advice of the manufacturer or a competent person at all times when undertaking repairs and/or modifications to equipment.

A full copy of the Play Inspection Company Ltd. Terms & Conditions is available on our website ([www.playinspections.co.uk](http://www.playinspections.co.uk))

## Table 1

The operator is responsible for following the guidance of the relevant standards. The standards give guidance on the installation, inspection, maintenance and operation of the various types of facilities. The inspection guidance is listed in Table 1, with an indication of which parts will be included in an RPII Annual or Post-Installation Inspection. The relevant standards also contain additional parts which the operator should follow.

Inspection recommendations of relevant standards Refer to relevant standards for full text	Annual Main	RPII Annual Outdoor/ Fully enclosed Inspection
6.1 d) Overall levels of safety of equipment (see note 1)	✓	✓ [1]
6.1 d) Overall levels of safety of foundations (see note 1)	✓	✓ [1]
6.1 d) Overall levels of safety of playing surfaces (see note 2)	✓	✓ [2]
6.1 d) Compliance with the relevant parts of the standard and or risk assessment (see note 3)	✓	✓ [3]
6.1 d) Effects of weather	✓	✓
6.1 d) Presence of rot, decay or corrosion (see note 1)	✓	✓ [1]
6.1 d) Assessment of repairs made or added or replaced components (see note 4)	✓	✓ [4]
6.1 d) Excavation or dismantling/additional measures	✓	✗
6.2.1 Assessment of glass reinforced plastics (see note 5)	✓	✓ [5]
6.2.1 Inspection of one post equipment (see note 1)	✓	✓ [1]
6.2.4 Undertaking the Operators inspection protocol	✓	✗

NB: The clause numbers in table 1 are taken from BS EN 1176 - Part 7:2020. The content is equally applicable to all other relevant standards listed herein. Playgrounds contain a range of equipment from different manufacturers and installed over a number of years; operators should implement any guidance provided by the manufacturer. Item specific detail is not readily available to RPII Playground Inspectors, whose report contributes to the operator's overall Annual Main Inspection as detailed in the relevant standards.

[1] A manual test only is undertaken for stability. Wear and instability are only detectable where readily apparent without dismantling or destruction and without the use of tools, excavation or specialist equipment. Rot and corrosion are tested or with a hammer and/or steel rod. Decay in timber may exist which can only be found with specialist equipment.


[2] Only the visible condition and dimensional compliance of surface extent is considered. Neither testing of impact attenuating properties nor measurement of the thickness of bound surfaces are undertaken on RPII annual inspections.

[3] The inspection assesses compliance where this can be tested on site using manual methods without dismantling, destruction and without the use of tools or specialist equipment.

[4] The operator should use manufacturer's recommended parts, or equivalent. We are unable to verify if such parts have been used, and any subsequent change in quality or performance

[5] Visible glass fibres will be noted in reports. The operator is responsible for repairs or replacement.

# Risk Assessment Matrix

			Scores in the report are multiplication factors of Likelihood x Severity					
			Severity>>					
Likelihood	Very High probability, if the situation is not addressed an accident is almost certain.	5	Very High	VL (5)	L (10)	M (15)	H (20)	VH (25)
	High probability an accident is probable without any added factor.	4	High	VL (4)	L (8)	M (12)	H (16)	H (20)
	Moderate probability an incident is foreseeable.	3	Moderate	VL (3)	L (6)	L (9)	M (12)	M (15)
	Some probability, requires a combination of factors to take place.	2	Low	VL (2)	VL (4)	L (6)	L (8)	L (10)
	No significant probability; lightning strike, freak accident.	1	Very Low	VL (1)	VL (2)	VL (3)	VL (4)	VL (5)
				Very Low	Low	Moderate	High	Very High
				1	2	3	4	5
				No injury likely e.g. damaged or soiled clothing, minor bruising, grazes	Minor injury, laceration or bruising requiring first aid only	Injury requiring medical intervention e.g. cuts requiring stitches	Serious injury including concussions or fracture of long bones	Severe injury involving a potential life changing injury or fatality
				Severity>>				
Note 1: The total risk scores included within our reports are a multiplication factor of the calculated Likelihood and Severity of each finding. Both Likelihood and Severity are given a number between 1 - 5 as shown on the matrix above and these two numbers are then multiplied together to give the total risk score that is shown against defects on the report. Total risk scores can be divided in both directions, i.e. a total risk score of 12 could be a Likelihood (3) x Severity (4) or Likelihood (4) x Severity (3).								
Note 2: When we inspect we only see a snapshot of the current condition of the equipment. It is the operators responsibility to ensure that there is a continuing level of maintenance to keep the equipment in good working order and the site fit for use.								

## Equipment has been assessed to the following standards where relevant:

BS EN 1176 Parts 1-11 (Playground equipment and surfacing)  
 BS EN 14974 (Facilities for users of roller sports equipment)  
 BS EN 15312 (Free access multi-sports equipment)  
 BS EN 16899 (Parkour Equipment)  
 BS EN 16630 (Outdoor Fitness Equipment).



## King Moor Parish Council

Inspection Ref: 1227000

Site Ref: 53688

Inspected: 9-November-2020 - 12:52 by Matt Hall RPII Annual Inspector

Risk Assessment: 12 Moderate Risk



**Location:**

The site is partially overlooked by properties in the local community

**Disabled Access:**

Generally accessible; an area accessible to most.



### 8 - Low Risk

**Item:** Site General  
**Manufacturer:** Owner/Operator  
**Surface Type:** N/A  
**Item Quantity:** 1  
**Equipment Compliance:** N/A  
**Surface Area Compliance:** N/A

**Total Findings:** 5



#### Finding 1

The site is accessible to the public during the COVID 19 pandemic. The government have released guidelines for safely re-opening these types of facilities which is available on the government website. - Ensure there is an appropriate risk assessment in place and review regularly

#### Finding 3

There are weeds/vegetation growth between or around the edges of the surfacing - Remove weeds/vegetation growth

#### Finding 5

It is recommended that signage, with information including the site address, contact information for maintenance issues and emergency contact details are provided for the facility - Provide in accordance with the recommendations

#### Finding 2

There is some tree debris on the surfacing - Remove and maintain

#### Finding 4

There is algae or moss growth on the surface resulting in slippery conditions in the majority of areas - Clean and treat appropriately

### 6 - Low Risk

**Item:** Fencing - Post & Rail  
**Manufacturer:** Owner/Operator  
**Surface Type:** Grass  
**Item Quantity:** 1  
**Equipment Compliance:** N/A  
**Surface Area Compliance:** N/A

**Total Findings:** 2



#### Finding 1

There are a number of loose posts around the fence - Monitor for any further deterioration and reset as required

#### Finding 2

There is some damage to the fence sections - Monitor for any further deterioration and repair as required



**i 6 - Low Risk**

**Item:** Picnic Table  
**Manufacturer:** Owner/Operator  
**Surface Type:** Grass  
**Item Quantity:** 4  
**Equipment Compliance:** N/A  
**Surface Area Compliance:** N/A



**Total Findings:** 1

**Finding 1**

There is some strimmer / machinery damage apparent on the posts, this can penetrate the preservative applied to the timber and accelerate the rotting process - Monitor for any deterioration (rot) and replace as required

**i 6 - Low Risk**

**Item:** Litter Bin  
**Manufacturer:** Owner/Operator  
**Surface Type:** Grass  
**Item Quantity:** 1  
**Equipment Compliance:** N/A  
**Surface Area Compliance:** N/A



**Total Findings:** 1

**Finding 1**

The lid or door of the litter bin is not secured - Ensure the lid or door is kept locked



**i 4 - Very Low Risk**

**Item:** Bench  
**Manufacturer:** Owner/Operator  
**Surface Type:** Concrete  
**Item Quantity:** 1  
**Equipment Compliance:** N/A  
**Surface Area Compliance:** N/A

**Total Findings:** 1



**Finding 1**

This item is satisfactory - no work required -



**! 12 - Moderate Risk**

**Item:** 1 Bay 2 Seat (Cradle)  
**Manufacturer:** Playdale Playgrounds Ltd  
**Surface Type:** Wet Pour  
**Item Quantity:** 1  
**Equipment Compliance:** Yes  
**Surface Area Compliance:** Yes

**Total Findings:** 10



**Finding 1**

There are gaps opening between the surfacing and the edging surround or between the joints in the surfacing - Monitor for any further deterioration and repair as required

**Finding 3**

There is or are fixings missing on the swivel allowing the seat to slide along the cross bar - Replace all missing fixings

**Finding 5**

The swing seat frames are corroding - Monitor for any further deterioration and replace as required

**Finding 7**

The seat is severely damaged and requires replacing - Replace damaged seat

**Finding 9**

There are areas or parts of the timber on the structure that have rotted - Replace all affected timbers

**Finding 2**

The timber has a number of splits/shakes or air cracks and this may affect the stability or allow water ingress which will accelerate the rotting process - Monitor to ensure the splits do not cross through fixing points of the structure and/or cause any instability

**Finding 4**

The seat has minor damage or wear - Monitor for any further deterioration and replace as required

**Finding 6**

There are caps missing from the underside of the seats - Replace missing caps under the seats

**Finding 8**

There are areas or parts of the timber on the structure that have rotted - Replace all affected timbers

**Finding 10**

There are areas or parts of the timber on the structure that have rotted - Replace all affected timbers



### 8 - Low Risk

**Item:** Play Panel  
**Manufacturer:** Playdale Playgrounds Ltd  
**Surface Type:** Grass  
**Item Quantity:** 1  
**Equipment Compliance:** Yes  
**Surface Area Compliance:** N/A

**Total Findings:** 3



#### Finding 1

There is some strimmer / machinery damage apparent on the posts, this can penetrate the preservative applied to the timber and accelerate the rotting process - Monitor for any deterioration (rot) and replace as required

#### Finding 3

There is/are bolt cap covers missing or damaged on the item - Replace missing or damaged bolt cap covers

#### Finding 2

The lever cap is missing - Replace lever cap

### 6 - Low Risk

**Item:** Spring See-Saw  
**Manufacturer:** Playdale Playgrounds Ltd  
**Surface Type:** Wet Pour  
**Item Quantity:** 1  
**Equipment Compliance:** No  
**Surface Area Compliance:** Yes

**Total Findings:** 2



#### Finding 1

The end of handgrips and/or footrests have a cross section of less than 15cm<sup>2</sup> and fail to meet the requirements of BS EN 1176 Part 6 - Monitor - No remedial work recommended

#### Finding 2

There are gaps opening between the surfacing and the edging surround or between the joints in the surfacing - Monitor for any further deterioration and repair as required



**i 6 - Low Risk**

**Item:** Play Panel  
**Manufacturer:** Playdale Playgrounds Ltd  
**Surface Type:** Grass  
**Item Quantity:** 1  
**Equipment Compliance:** Yes  
**Surface Area Compliance:** N/A

**Total Findings:** 1



**Finding 1**

There is some strimmer / machinery damage apparent on the posts, this can penetrate the preservative applied to the timber and accelerate the rotting process - Monitor for any deterioration (rot) and replace as required

**i 6 - Low Risk**

**Item:** Cone Climber  
**Manufacturer:** Tayplay Ltd  
**Surface Type:** Wet Pour  
**Item Quantity:** 1  
**Equipment Compliance:** Yes  
**Surface Area Compliance:** Yes

**Total Findings:** 3



**Finding 1**

There are gaps opening between the surfacing and the edging surround or between the joints in the surfacing - Monitor for any further deterioration and repair as required

**Finding 2**

The bearing is showing signs of wear - Monitor for any further deterioration and replace as required

**Finding 3**

There appears to be components missing resulting in projecting brackets on the support - Refer to manufacturer as to the missing components



**i 8 - Low Risk**

**Item:** Toadstools & Table  
**Manufacturer:** Unknown  
**Surface Type:** Grass  
**Item Quantity:** 1  
**Equipment Compliance:** N/A  
**Surface Area Compliance:** N/A

**Total Findings:** 1



**Finding 1**

The area around the item has eroded and may become slippery - Reinststate eroded area



**i 9 - Low Risk**

**Item:** Multi Play (Junior)  
**Manufacturer:** Playdale Playgrounds Ltd  
**Surface Type:** Wet Pour  
**Item Quantity:** 1  
**Equipment Compliance:** No  
**Surface Area Compliance:** No

**Total Findings:** 11



**Finding 1**

There are gaps opening between the surfacing and the edging surround or between the joints in the surfacing - Monitor for any further deterioration and repair as required

**Finding 3**

The surface is lifting at the edges and creating trip points - Repair perimeter of surfacing to remove trip points

**Finding 5**

There are a number of dents in the slide surface - Monitor for any further deterioration and repair as required

**Finding 7**

Parts of the steel on this item have corroded excessively and the metal has perforated in places - Ensure all affected areas are treated and repaired

**Finding 9**

The timber has a number of splits/shakes or air cracks and this may affect the stability or allow water ingress which will accelerate the rotting process - Monitor to ensure the splits do not cross through fixing points of the structure and/or cause any instability

**Finding 11**

There is/are bolt cap covers missing or damaged on the item - Replace missing or damaged bolt cap covers

**Finding 2**

There are trip hazards at the edges of the surface - Reinstate surrounding surface levels to remove the trip points

**Finding 4**

The surfacing dimensions are short and do not meet with the requirements of the current applicable standard - Monitor - no remedial action recommended

**Finding 6**

The ropes/nets are worn/damaged in places - Monitor for any further deterioration and repair or replace as required

**Finding 8**

There is/are finger entrapment/s in the framework and the item fails to meet the requirements of BS EN 1176 Part 1 4.2.7.6 Entrapment of fingers - Monitor - No remedial work recommended

**Finding 10**

Rope ferrules are corroding on the scramble net - Monitor for any further deterioration and replace as required



 6 - Low Risk

**Item:** Talk Tubes  
**Manufacturer:** Playdale Playgrounds Ltd  
**Surface Type:** Grass  
**Item Quantity:** 1  
**Equipment Compliance:** Yes  
**Surface Area Compliance:** N/A

**Total Findings:** 1



**Finding 1**

The surface has eroded in some areas - Reinstate the surface



**! 12 - Moderate Risk**

**Item:** 2 Bay 2 Flat 1 Basket Seat  
**Manufacturer:** Playdale Playgrounds Ltd  
**Surface Type:** Wet Pour  
**Item Quantity:** 1  
**Equipment Compliance:** No  
**Surface Area Compliance:** Yes

**Total Findings:** 18



**Finding 1**

The safety surface under or around this unit has been damaged - Monitor for any further deterioration and repair as required

**Finding 3**

The timber edge has rotted - Replace timber edge

**Finding 5**

There are areas or parts of the timber on the structure that have rotted - Replace all affected timbers

**Finding 7**

The seat is severely damaged and requires replacing - Repair damaged seat

**Finding 9**

The bushes are worn or missing - Replace worn or missing bushes

**Finding 11**

The chain links are worn in excess of 40% and require renewing - Replace worn chains

**Finding 13**

The bushes are showing signs of wear - Monitor for any further deterioration and replace as required

**Finding 15**

There is some wear to the shackles. - Monitor for any further deterioration and replace when 40% worn

**Finding 2**

There are trip hazards at the edges of the surface - Reinstate surrounding surface levels to remove the trip points

**Finding 4**

The timber has a number of splits/shakes or air cracks and this may affect the stability or allow water ingress which will accelerate the rotting process - Monitor to ensure the splits do not cross through fixing points of the structure and/or cause any instability

**Finding 6**

Additional brackets have been added to the frame for an unknown reason - Remove brackets if not required

**Finding 8**

Swings of this design should have a secondary safety device fitted to prevent collapse of the seat in the event of a joint failure to meet the requirements of BS EN 1176 Part 2 - Consider providing a secondary safety device where possible

**Finding 10**

The shackles are worn in excess of 40% and require renewing, raised risk as no safety chain - Replace worn shackles

**Finding 12**

The basket swing lugs are set on an angle - Refer to manufacturers as to correct fitment

**Finding 14**

The bushes are showing signs of wear - Monitor for any further deterioration and replace as required

**Finding 16**

The chain openings are in excess of the 8.6mm as recommended by BS EN 1176 - Monitor - No remedial work recommended



#### Finding 17

The seat has minor damage or wear - Monitor for any further deterioration and replace as required

#### Finding 18

There is wear to the swing seat lugs - Monitor for any further deterioration and repair as required

#### 6 - Low Risk

**Item:** Play Panel  
**Manufacturer:** Playdale Playgrounds Ltd  
**Surface Type:** Grass  
**Item Quantity:** 1  
**Equipment Compliance:** Yes  
**Surface Area Compliance:** N/A

**Total Findings:** 1



#### Finding 1

There is some strimmer / machinery damage apparent on the posts, this can penetrate the preservative applied to the timber and accelerate the rotting process - Monitor for any deterioration (rot) and replace as required



#### 4 - Very Low Risk

**Item:** Talk Tubes  
**Manufacturer:** Playdale Playgrounds Ltd  
**Surface Type:** Grass  
**Item Quantity:** 1  
**Equipment Compliance:** Yes  
**Surface Area Compliance:** N/A

**Total Findings:** 1



##### **Finding 1**

This item is satisfactory - no work required -

#### 6 - Low Risk

**Item:** Musical Instrument  
**Manufacturer:** Playdale Playgrounds Ltd  
**Surface Type:** Grass  
**Item Quantity:** 1  
**Equipment Compliance:** Yes  
**Surface Area Compliance:** N/A

**Total Findings:** 1



##### **Finding 1**

There is some strimmer / machinery damage apparent on the posts, this can penetrate the preservative applied to the timber and accelerate the rotting process - Monitor for any deterioration (rot) and replace as required



**i 8 - Low Risk**

**Item:** Overhead Rotator  
**Manufacturer:** Playdale Playgrounds Ltd  
**Surface Type:** Wet Pour  
**Item Quantity:** 1  
**Equipment Compliance:** Yes  
**Surface Area Compliance:** Yes

**Total Findings:** 5



**Finding 1**

The tree canopy overhangs the equipment and is less than 2.0m away - Lift tree canopy to ensure a minimum clearance of 2.0m from the equipment

**Finding 3**

There are gaps opening between the surfacing and the edging surround or between the joints in the surfacing - Monitor for any further deterioration and repair as required

**Finding 5**

A number of fixing(s) have worked loose - Secure all loose fixings

**Finding 2**

There are trip hazards at the edges of the surface - Reinstate surrounding surface levels to remove the trip points

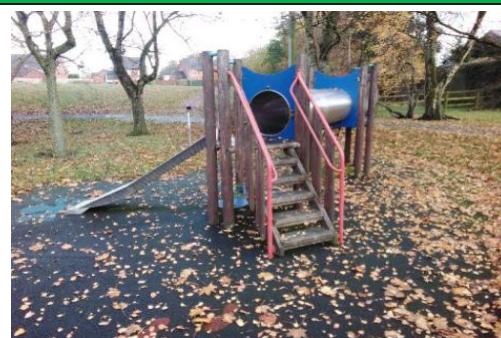
**Finding 4**

It appears that there are fixings missing - Refer to manufacturer as to correct fitment

**i 8 - Low Risk**

**Item:** Multi Play (Toddler)  
**Manufacturer:** Playdale Playgrounds Ltd  
**Surface Type:** Wet Pour  
**Item Quantity:** 1  
**Equipment Compliance:** Yes  
**Surface Area Compliance:** Yes

**Total Findings:** 2



**Finding 1**

There are gaps opening between the surfacing and the edging surround or between the joints in the surfacing - Monitor for any further deterioration and repair as required

**Finding 2**

There is algae or moss on the surface of the equipment - Clean and treat appropriately



**! 12 - Moderate Risk**

**Item:** Adventure Trail  
**Manufacturer:** Playdale Playgrounds Ltd  
**Surface Type:** Grass  
**Item Quantity:** 1  
**Equipment Compliance:** No  
**Surface Area Compliance:** Yes



**Total Findings:** 17

**Finding 1**

A damaged branch is hanging in the fall space - Remove damaged branch

**Finding 3**

There are areas or parts of the timber on the structure that have rotted - Replace all affected timbers

**Finding 5**

The adjacent tree trunk forms a hard object within the falling space of the equipment in contravention of the requirements of BS EN 1176 Part 1 - Monitor - No remedial work recommended

**Finding 7**

There are areas or parts of the timber on the structure that have rotted - Replace all affected timbers

**Finding 9**

There is/are bolt cap covers missing or damaged on the item - Replace missing or damaged bolt cap covers

**Finding 11**

The timber on this item has severe rot - Remove and replace all affected timber sections

**Finding 13**

There are areas or parts of the timber on the structure that have rotted - Replace all affected timbers

**Finding 15**

The timber on this item has severe rot - Remove and replace all affected timber sections

**Finding 17**

There is some evidence of rot in all the timber element supports - Monitor for any further deterioration and replace as required

**Finding 2**

There is algae or moss on the surface of the equipment - Clean and treat appropriately

**Finding 4**

There are areas or parts of the timber on the structure that have rotted - Replace all affected timbers

**Finding 6**

Foliage has encroached on the fall space of the equipment - Cut back foliage

**Finding 8**

The timber on this item has severe rot - Remove and replace all affected timber sections

**Finding 10**

There are areas or parts of the timber on the structure that have rotted - Replace all affected timbers

**Finding 12**

There are areas or parts of the timber on the structure that have rotted - Replace all affected timbers

**Finding 14**

There are areas or parts of the timber on the structure that have rotted - Replace all affected timbers

**Finding 16**

The surface has eroded and the foundations are exposed - Reinstate surrounding surfaces to cover the foundations



 6 - Low Risk

**Item:** Basketball Post  
**Manufacturer:** Unknown  
**Surface Type:** Bitmac  
**Item Quantity:** 1  
**Equipment Compliance:** Yes  
**Surface Area Compliance:** N/A



**Total Findings:** 2

**Finding 1**

The backboard is damaged - Monitor for any further deterioration and repair as required

**Finding 2**

Tree foliage is hanging into the basket ball area - Cut back foliage

 6 - Low Risk

**Item:** Fence - Steel Mesh  
**Manufacturer:** Owner/Operator  
**Surface Type:** Grass  
**Item Quantity:** 1  
**Equipment Compliance:** N/A  
**Surface Area Compliance:** N/A



**Total Findings:** 3

**Finding 1**

The fence mesh is loose on the posts in areas - Re secure fence to posts

**Finding 2**

There is no padlock on the maintenance gate - Provide a padlock to secure the gate

**Finding 3**

The gate is loose on its hinges - Investigate and take appropriate action to rectify



## Findings information

### 0 - Risk Assessment not Undertaken (Finding 1)

**Item:** Ancillary Items - Site General  
**Manufacturer:** Owner/Operator

**Risk Level:** N - Risk Assessment not Undertaken  
**Surface:** N/A



**Finding:** The site is accessible to the public during the COVID 19 pandemic. The government have released guidelines for safely re-opening these types of facilities which is available on the government website.

**Action:** Ensure there is an appropriate risk assessment in place and review regularly

### 6 - Low Risk (Finding 2)

**Item:** Ancillary Items - Site General  
**Manufacturer:** Owner/Operator

**Risk Level:** L - Low Risk  
**Surface:** N/A



**Finding:** There is some tree debris on the surfacing

**Action:** Remove and maintain



**i** 6 - Low Risk (Finding 3)

**Item:** Ancillary Items - Site General  
**Manufacturer:** Owner/Operator

**Risk Level:** L - Low Risk  
**Surface:** N/A



**Finding:** There are weeds/vegetation growth between or around the edges of the surfacing

**Action:** Remove weeds/vegetation growth



**i** 8 - Low Risk (Finding 4)

**Item:** Ancillary Items - Site General  
**Manufacturer:** Owner/Operator

**Risk Level:** L - Low Risk  
**Surface:** N/A



**Finding:** There is algae or moss growth on the surface resulting in slippery conditions in the majority of areas

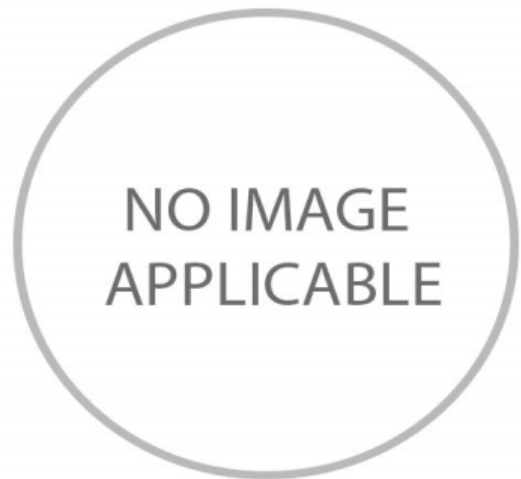
**Action:** Clean and treat appropriately



**i** 5 - Very Low Risk (Finding 5)

**Item:** Ancillary Items - Site General  
**Manufacturer:** Owner/Operator

**Risk Level:** V - Very Low Risk  
**Surface:** N/A



**Finding:** It is recommended that signage, with information including the site address, contact information for maintenance issues and emergency contact details are provided for the facility

**Action:** Provide in accordance with the recommendations

**i** 6 - Low Risk (Finding 1)

**Item:** Ancillary Items - Fencing - Post & Rail  
**Manufacturer:** Owner/Operator

**Risk Level:** L - Low Risk  
**Surface:** Grass



**Finding:** There are a number of loose posts around the fence

**Action:** Monitor for any further deterioration and reset as required



**i** 6 - Low Risk (Finding 2)

**Item:** Ancillary Items - Fencing - Post & Rail  
**Manufacturer:** Owner/Operator

**Risk Level:** L - Low Risk  
**Surface:** Grass



**Finding:** There is some damage to the fence sections

**Action:** Monitor for any further deterioration and repair as required

**i** 6 - Low Risk (Finding 1)

**Item:** Ancillary Items - Picnic Table  
**Manufacturer:** Owner/Operator

**Risk Level:** L - Low Risk  
**Surface:** Grass



**Finding:** There is some strimmer / machinery damage apparent on the posts, this can penetrate the preservative applied to the timber and accelerate the rotting process

**Action:** Monitor for any deterioration (rot) and replace as required



**i** 6 - Low Risk (Finding 1)

**Item:** Ancillary Items - Litter Bin  
**Manufacturer:** Owner/Operator

**Risk Level:** L - Low Risk  
**Surface:** Grass



**Finding:** The lid or door of the litter bin is not secured

**Action:** Ensure the lid or door is kept locked

**i** 6 - Low Risk (Finding 1)

**Item:** Swings - 1 Bay 2 Seat (Cradle)  
**Manufacturer:** Playdale Playgrounds Ltd

**Risk Level:** L - Low Risk  
**Surface:** Wet Pour



**Finding:** There are gaps opening between the surfacing and the edging surround or between the joints in the surfacing

**Action:** Monitor for any further deterioration and repair as required



**i** 6 - Low Risk (Finding 2)

**Item:** Swings - 1 Bay 2 Seat (Cradle)  
**Manufacturer:** Playdale Playgrounds Ltd

**Risk Level:** L - Low Risk  
**Surface:** Wet Pour



**Finding:** The timber has a number of splits/shakes or air cracks and this may affect the stability or allow water ingress which will accelerate the rotting process

**Action:** Monitor to ensure the splits do not cross through fixing points of the structure and/or cause any instability

**i** 8 - Low Risk (Finding 3)

**Item:** Swings - 1 Bay 2 Seat (Cradle)  
**Manufacturer:** Playdale Playgrounds Ltd

**Risk Level:** L - Low Risk  
**Surface:** Wet Pour



**Finding:** There is or are fixings missing on the swivel allowing the seat to slide along the cross bar

**Action:** Replace all missing fixings



**i** 6 - Low Risk (Finding 4)

**Item:** Swings - 1 Bay 2 Seat (Cradle)  
**Manufacturer:** Playdale Playgrounds Ltd

**Risk Level:** L - Low Risk  
**Surface:** Wet Pour



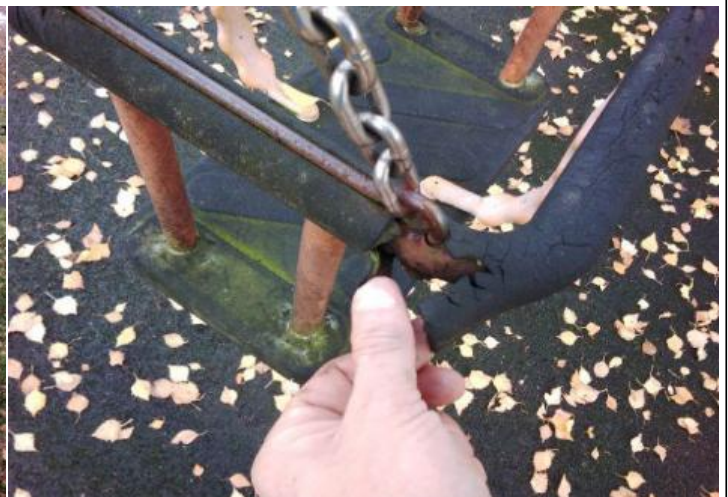
**Finding:** The seat has minor damage or wear

**Action:** Monitor for any further deterioration and replace as required

**i** 6 - Low Risk (Finding 5)

**Item:** Swings - 1 Bay 2 Seat (Cradle)  
**Manufacturer:** Playdale Playgrounds Ltd

**Risk Level:** L - Low Risk  
**Surface:** Wet Pour



**Finding:** The swing seat frames are corroding

**Action:** Monitor for any further deterioration and replace as required



**i** 6 - Low Risk (Finding 6)

**Item:** Swings - 1 Bay 2 Seat (Cradle)  
**Manufacturer:** Playdale Playgrounds Ltd

**Risk Level:** L - Low Risk  
**Surface:** Wet Pour



**Finding:** There are caps missing from the underside of the seats

**Action:** Replace missing caps under the seats

**i** 10 - Low Risk (Finding 7)

**Item:** Swings - 1 Bay 2 Seat (Cradle)  
**Manufacturer:** Playdale Playgrounds Ltd

**Risk Level:** L - Low Risk  
**Surface:** Wet Pour



**Finding:** The seat is severely damaged and requires replacing

**Action:** Replace damaged seat



 12 - Moderate Risk (Finding 8)

**Item:** Swings - 1 Bay 2 Seat (Cradle)  
**Manufacturer:** Playdale Playgrounds Ltd

**Risk Level:** M - Moderate Risk  
**Surface:** Wet Pour



**Finding:** There are areas or parts of the timber on the structure that have rotted

**Action:** Replace all affected timbers

 12 - Moderate Risk (Finding 9)

**Item:** Swings - 1 Bay 2 Seat (Cradle)  
**Manufacturer:** Playdale Playgrounds Ltd

**Risk Level:** M - Moderate Risk  
**Surface:** Wet Pour



**Finding:** There are areas or parts of the timber on the structure that have rotted

**Action:** Replace all affected timbers



 12 - Moderate Risk (Finding 10)

**Item:** Swings - 1 Bay 2 Seat (Cradle)  
**Manufacturer:** Playdale Playgrounds Ltd

**Risk Level:** M - Moderate Risk  
**Surface:** Wet Pour



**Finding:** There are areas or parts of the timber on the structure that have rotted

**Action:** Replace all affected timbers

 6 - Low Risk (Finding 1)

**Item:** Activity Equipment - Play Panel  
**Manufacturer:** Playdale Playgrounds Ltd

**Risk Level:** L - Low Risk  
**Surface:** Grass



**Finding:** There is some strimmer / machinery damage apparent on the posts, this can penetrate the preservative applied to the timber and accelerate the rotting process

**Action:** Monitor for any deterioration (rot) and replace as required



**i** 8 - Low Risk (Finding 2)

**Item:** Activity Equipment - Play Panel  
**Manufacturer:** Playdale Playgrounds Ltd

**Risk Level:** L - Low Risk  
**Surface:** Grass



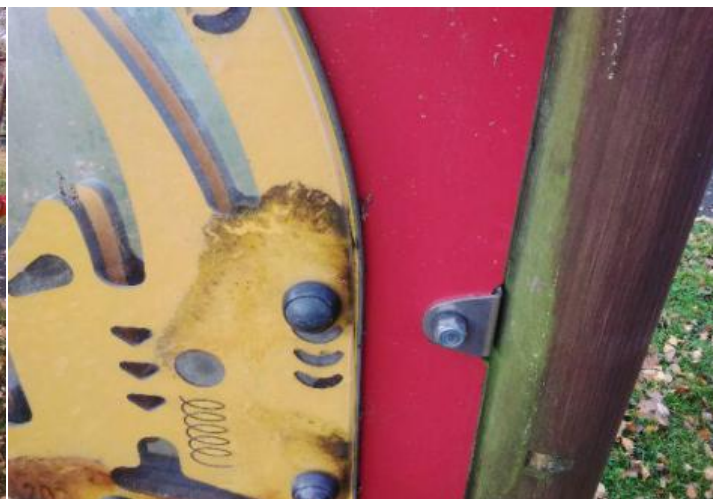
**Finding:** The lever cap is missing

**Action:** Replace lever cap

**i** 4 - Very Low Risk (Finding 3)

**Item:** Activity Equipment - Play Panel  
**Manufacturer:** Playdale Playgrounds Ltd

**Risk Level:** V - Very Low Risk  
**Surface:** Grass



**Finding:** There is/are bolt cap covers missing or damaged on the item

**Action:** Replace missing or damaged bolt cap covers



**i** 6 - Low Risk (Finding 1)

**Item:** Rocking Equipment - Spring See-Saw  
**Manufacturer:** Playdale Playgrounds Ltd

**Risk Level:** L - Low Risk  
**Surface:** Wet Pour



**Finding:** The end of handgrips and/or footrests have a cross section of less than 15cm<sup>2</sup> and fail to meet the requirements of BS EN 1176 Part 6  
**Action:** Monitor - No remedial work recommended

**i** 6 - Low Risk (Finding 2)

**Item:** Rocking Equipment - Spring See-Saw  
**Manufacturer:** Playdale Playgrounds Ltd

**Risk Level:** L - Low Risk  
**Surface:** Wet Pour



**Finding:** There are gaps opening between the surfacing and the edging surround or between the joints in the surfacing  
**Action:** Monitor for any further deterioration and repair as required



**i** 6 - Low Risk (Finding 1)

**Item:** Activity Equipment - Play Panel  
**Manufacturer:** Playdale Playgrounds Ltd

**Risk Level:** L - Low Risk  
**Surface:** Grass



**Finding:** There is some strimmer / machinery damage apparent on the posts, this can penetrate the preservative applied to the timber and accelerate the rotting process

**Action:** Monitor for any deterioration (rot) and replace as required

**i** 6 - Low Risk (Finding 1)

**Item:** Rotor Play - Cone Climber  
**Manufacturer:** Tayplay Ltd

**Risk Level:** L - Low Risk  
**Surface:** Wet Pour



**Finding:** There are gaps opening between the surfacing and the edging surround or between the joints in the surfacing

**Action:** Monitor for any further deterioration and repair as required



**i** 6 - Low Risk (Finding 2)

**Item:** Rotor Play - Cone Climber  
**Manufacturer:** Tayplay Ltd

**Risk Level:** L - Low Risk  
**Surface:** Wet Pour



**Finding:** The bearing is showing signs of wear

**Action:** Monitor for any further deterioration and replace as required

**i** 6 - Low Risk (Finding 3)

**Item:** Rotor Play - Cone Climber  
**Manufacturer:** Tayplay Ltd

**Risk Level:** L - Low Risk  
**Surface:** Wet Pour



**Finding:** There appears to be components missing resulting in projecting brackets on the support

**Action:** Refer to manufacturer as to the missing components



**i** 8 - Low Risk (Finding 1)

**Item:** Ancillary Items - Toadstools & Table  
**Manufacturer:** Unknown

**Risk Level:** L - Low Risk  
**Surface:** Grass



**Finding:** The area around the item has eroded and may become slippery

**Action:** Reinstatate eroded area

**i** 6 - Low Risk (Finding 1)

**Item:** Activity Equipment - Multi Play (Junior)  
**Manufacturer:** Playdale Playgrounds Ltd

**Risk Level:** L - Low Risk  
**Surface:** Wet Pour



**Finding:** There are gaps opening between the surfacing and the edging surround or between the joints in the surfacing

**Action:** Monitor for any further deterioration and repair as required



**i** 8 - Low Risk (Finding 2)

**Item:** Activity Equipment - Multi Play (Junior)  
**Manufacturer:** Playdale Playgrounds Ltd

**Risk Level:** L - Low Risk  
**Surface:** Wet Pour



**Finding:** There are trip hazards at the edges of the surface

**Action:** Reinstate surrounding surface levels to remove the trip points

**i** 8 - Low Risk (Finding 3)

**Item:** Activity Equipment - Multi Play (Junior)  
**Manufacturer:** Playdale Playgrounds Ltd

**Risk Level:** L - Low Risk  
**Surface:** Wet Pour



**Finding:** The surface is lifting at the edges and creating trip points

**Action:** Repair perimeter of surfacing to remove trip points



**i** 5 - Very Low Risk (Finding 4)

**Item:** Activity Equipment - Multi Play (Junior)  
**Manufacturer:** Playdale Playgrounds Ltd

**Risk Level:** V - Very Low Risk  
**Surface:** Wet Pour



**Finding:** The surfacing dimensions are short and do not meet with the requirements of the current applicable standard

**Action:** Monitor - no remedial action recommended

**i** 4 - Very Low Risk (Finding 5)

**Item:** Activity Equipment - Multi Play (Junior)  
**Manufacturer:** Playdale Playgrounds Ltd

**Risk Level:** V - Very Low Risk  
**Surface:** Wet Pour



**Finding:** There are a number of dents in the slide surface

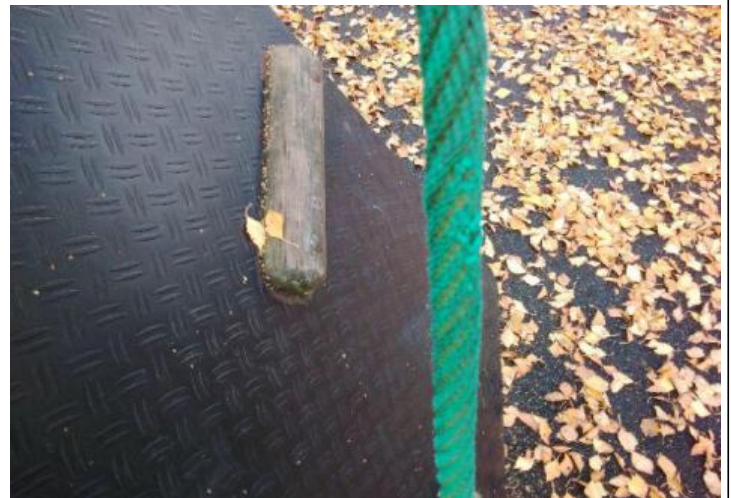
**Action:** Monitor for any further deterioration and repair as required



**i** 6 - Low Risk (Finding 6)

**Item:** Activity Equipment - Multi Play (Junior)  
**Manufacturer:** Playdale Playgrounds Ltd

**Risk Level:** L - Low Risk  
**Surface:** Wet Pour



**Finding:** The ropes/nets are worn/damaged in places

**Action:** Monitor for any further deterioration and repair or replace as required



**i** 9 - Low Risk (Finding 7)

**Item:** Activity Equipment - Multi Play (Junior)  
**Manufacturer:** Playdale Playgrounds Ltd

**Risk Level:** L - Low Risk  
**Surface:** Wet Pour



**Finding:** Parts of the steel on this item have corroded excessively and the metal has perforated in places

**Action:** Ensure all affected areas are treated and repaired

**i** 5 - Very Low Risk (Finding 8)

**Item:** Activity Equipment - Multi Play (Junior)  
**Manufacturer:** Playdale Playgrounds Ltd

**Risk Level:** V - Very Low Risk  
**Surface:** Wet Pour



**Finding:** There is/are finger entrapment/s in the framework and the item fails to meet the requirements of BS EN 1176 Part 1 4.2.7.6 Entrapment of fingers

**Action:** Monitor - No remedial work recommended



**i** 6 - Low Risk (Finding 9)

**Item:** Activity Equipment - Multi Play (Junior)  
**Manufacturer:** Playdale Playgrounds Ltd

**Risk Level:** L - Low Risk  
**Surface:** Wet Pour



**Finding:** The timber has a number of splits/shakes or air cracks and this may affect the stability or allow water ingress which will accelerate the rotting process

**Action:** Monitor to ensure the splits do not cross through fixing points of the structure and/or cause any instability

**i** 6 - Low Risk (Finding 10)

**Item:** Activity Equipment - Multi Play (Junior)  
**Manufacturer:** Playdale Playgrounds Ltd

**Risk Level:** L - Low Risk  
**Surface:** Wet Pour



**Finding:** Rope ferrules are corroding on the scramble net

**Action:** Monitor for any further deterioration and replace as required



**i** 4 - Very Low Risk (Finding 11)

**Item:** Activity Equipment - Multi Play (Junior)  
**Manufacturer:** Playdale Playgrounds Ltd

**Risk Level:** V - Very Low Risk  
**Surface:** Wet Pour



**Finding:** There is/are bolt cap covers missing or damaged on the item

**Action:** Replace missing or damaged bolt cap covers

**i** 6 - Low Risk (Finding 1)

**Item:** Other - Talk Tubes  
**Manufacturer:** Playdale Playgrounds Ltd

**Risk Level:** L - Low Risk  
**Surface:** Grass



**Finding:** The surface has eroded in some areas

**Action:** Reinstate the surface



**i** 4 - Very Low Risk (Finding 1)

**Item:** Swings - 2 Bay 2 Flat 1 Basket Seat  
**Manufacturer:** Playdale Playgrounds Ltd

**Risk Level:** V - Very Low Risk  
**Surface:** Wet Pour



**Finding:** The safety surface under or around this unit has been damaged

**Action:** Monitor for any further deterioration and repair as required

**i** 8 - Low Risk (Finding 2)

**Item:** Swings - 2 Bay 2 Flat 1 Basket Seat  
**Manufacturer:** Playdale Playgrounds Ltd

**Risk Level:** L - Low Risk  
**Surface:** Wet Pour



**Finding:** There are trip hazards at the edges of the surface

**Action:** Reinstate surrounding surface levels to remove the trip points



**i** 8 - Low Risk (Finding 3)

**Item:** Swings - 2 Bay 2 Flat 1 Basket Seat  
**Manufacturer:** Playdale Playgrounds Ltd

**Risk Level:** L - Low Risk  
**Surface:** Wet Pour



**Finding:** The timber edge has rotted

**Action:** Replace timber edge

**i** 6 - Low Risk (Finding 4)

**Item:** Swings - 2 Bay 2 Flat 1 Basket Seat  
**Manufacturer:** Playdale Playgrounds Ltd

**Risk Level:** L - Low Risk  
**Surface:** Wet Pour



**Finding:** The timber has a number of splits/shakes or air cracks and this may affect the stability or allow water ingress which will accelerate the rotting process

**Action:** Monitor to ensure the splits do not cross through fixing points of the structure and/or cause any instability



12 - Moderate Risk (Finding 5)

**Item:** Swings - 2 Bay 2 Flat 1 Basket Seat  
**Manufacturer:** Playdale Playgrounds Ltd

**Risk Level:** M - Moderate Risk  
**Surface:** Wet Pour



**Finding:** There are areas or parts of the timber on the structure that have rotted

**Action:** Replace all affected timbers



**i** 0 - Risk Assessment not Undertaken (Finding 6)

**Item:** Swings - 2 Bay 2 Flat 1 Basket Seat  
**Manufacturer:** Playdale Playgrounds Ltd

**Risk Level:** N - Risk Assessment not Undertaken  
**Surface:** Wet Pour



**Finding:** Additional brackets have been added to the frame for an unknown reason

**Action:** Remove brackets if not required



**i** 9 - Low Risk (Finding 7)

**Item:** Swings - 2 Bay 2 Flat 1 Basket Seat  
**Manufacturer:** Playdale Playgrounds Ltd

**Risk Level:** L - Low Risk  
**Surface:** Wet Pour



**Finding:** The seat is severely damaged and requires replacing

**Action:** Repair damaged seat

**i** 8 - Low Risk (Finding 8)

**Item:** Swings - 2 Bay 2 Flat 1 Basket Seat  
**Manufacturer:** Playdale Playgrounds Ltd

**Risk Level:** L - Low Risk  
**Surface:** Wet Pour



**Finding:** Swings of this design should have a secondary safety device fitted to prevent collapse of the seat in the event of a joint failure to meet the requirements of BS EN 1176 Part 2

**Action:** Consider providing a secondary safety device where possible



**i** 8 - Low Risk (Finding 9)

**Item:** Swings - 2 Bay 2 Flat 1 Basket Seat  
**Manufacturer:** Playdale Playgrounds Ltd

**Risk Level:** L - Low Risk  
**Surface:** Wet Pour



**Finding:** The bushes are worn or missing

**Action:** Replace worn or missing bushes

**!** 12 - Moderate Risk (Finding 10)

**Item:** Swings - 2 Bay 2 Flat 1 Basket Seat  
**Manufacturer:** Playdale Playgrounds Ltd

**Risk Level:** M - Moderate Risk  
**Surface:** Wet Pour



**Finding:** The shackles are worn in excess of 40% and require renewing, raised risk as no safety chain

**Action:** Replace worn shackles



12 - Moderate Risk (Finding 11)

**Item:** Swings - 2 Bay 2 Flat 1 Basket Seat  
**Manufacturer:** Playdale Playgrounds Ltd

**Risk Level:** M - Moderate Risk  
**Surface:** Wet Pour



**Finding:** The chain links are worn in excess of 40% and require renewing

**Action:** Replace worn chains



**i** 8 - Low Risk (Finding 12)

**Item:** Swings - 2 Bay 2 Flat 1 Basket Seat  
**Manufacturer:** Playdale Playgrounds Ltd

**Risk Level:** L - Low Risk  
**Surface:** Wet Pour



**Finding:** The basket swing lugs are set on an angle

**Action:** Refer to manufacturers as to correct fitment



**i** 4 - Very Low Risk (Finding 13)

**Item:** Swings - 2 Bay 2 Flat 1 Basket Seat  
**Manufacturer:** Playdale Playgrounds Ltd

**Risk Level:** V - Very Low Risk  
**Surface:** Wet Pour



**Finding:** The bushes are showing signs of wear

**Action:** Monitor for any further deterioration and replace as required

**i** 4 - Very Low Risk (Finding 14)

**Item:** Swings - 2 Bay 2 Flat 1 Basket Seat  
**Manufacturer:** Playdale Playgrounds Ltd

**Risk Level:** V - Very Low Risk  
**Surface:** Wet Pour



**Finding:** The bushes are showing signs of wear

**Action:** Monitor for any further deterioration and replace as required



**i** 6 - Low Risk (Finding 15)

**Item:** Swings - 2 Bay 2 Flat 1 Basket Seat  
**Manufacturer:** Playdale Playgrounds Ltd

**Risk Level:** L - Low Risk  
**Surface:** Wet Pour



**Finding:** There is some wear to the shackles.

**Action:** Monitor for any further deterioration and replace when 40% worn

**i** 5 - Very Low Risk (Finding 16)

**Item:** Swings - 2 Bay 2 Flat 1 Basket Seat  
**Manufacturer:** Playdale Playgrounds Ltd

**Risk Level:** V - Very Low Risk  
**Surface:** Wet Pour



**Finding:** The chain openings are in excess of the 8.6mm as recommended by BS EN 1176

**Action:** Monitor - No remedial work recommended



**i** 6 - Low Risk (Finding 17)

**Item:** Swings - 2 Bay 2 Flat 1 Basket Seat  
**Manufacturer:** Playdale Playgrounds Ltd

**Risk Level:** L - Low Risk  
**Surface:** Wet Pour



**Finding:** The seat has minor damage or wear

**Action:** Monitor for any further deterioration and replace as required

**i** 6 - Low Risk (Finding 18)

**Item:** Swings - 2 Bay 2 Flat 1 Basket Seat  
**Manufacturer:** Playdale Playgrounds Ltd

**Risk Level:** L - Low Risk  
**Surface:** Wet Pour



**Finding:** There is wear to the swing seat lugs

**Action:** Monitor for any further deterioration and repair as required



 6 - Low Risk (Finding 1)

**Item:** Activity Equipment - Play Panel  
**Manufacturer:** Playdale Playgrounds Ltd

**Risk Level:** L - Low Risk  
**Surface:** Grass



**Finding:** There is some strimmer / machinery damage apparent on the posts, this can penetrate the preservative applied to the timber and accelerate the rotting process

**Action:** Monitor for any deterioration (rot) and replace as required

 6 - Low Risk (Finding 1)

**Item:** Other - Musical Instrument  
**Manufacturer:** Playdale Playgrounds Ltd

**Risk Level:** L - Low Risk  
**Surface:** Grass



**Finding:** There is some strimmer / machinery damage apparent on the posts, this can penetrate the preservative applied to the timber and accelerate the rotting process

**Action:** Monitor for any deterioration (rot) and replace as required



**i** 6 - Low Risk (Finding 1)

**Item:** Rotor Play - Overhead Rotator  
**Manufacturer:** Playdale Playgrounds Ltd

**Risk Level:** L - Low Risk  
**Surface:** Wet Pour



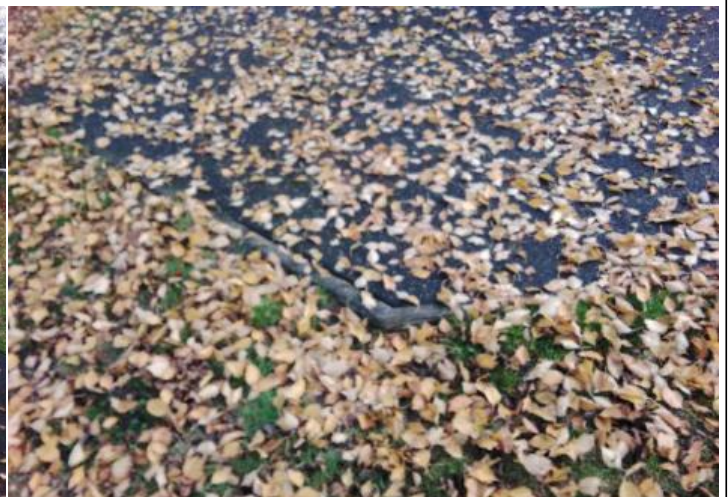
**Finding:** The tree canopy overhangs the equipment and is less than 2.0m away

**Action:** Lift tree canopy to ensure a minimum clearance of 2.0m from the equipment

**i** 8 - Low Risk (Finding 2)

**Item:** Rotor Play - Overhead Rotator  
**Manufacturer:** Playdale Playgrounds Ltd

**Risk Level:** L - Low Risk  
**Surface:** Wet Pour



**Finding:** There are trip hazards at the edges of the surface

**Action:** Reinstate surrounding surface levels to remove the trip points



**i** 6 - Low Risk (Finding 3)

**Item:** Rotor Play - Overhead Rotator  
**Manufacturer:** Playdale Playgrounds Ltd

**Risk Level:** L - Low Risk  
**Surface:** Wet Pour



**Finding:** There are gaps opening between the surfacing and the edging surround or between the joints in the surfacing  
**Action:** Monitor for any further deterioration and repair as required

**i** 6 - Low Risk (Finding 4)

**Item:** Rotor Play - Overhead Rotator  
**Manufacturer:** Playdale Playgrounds Ltd

**Risk Level:** L - Low Risk  
**Surface:** Wet Pour



**Finding:** It appears that there are fixings missing  
**Action:** Refer to manufacturer as to correct fitment



**i** 6 - Low Risk (Finding 5)

**Item:** Rotor Play - Overhead Rotator  
**Manufacturer:** Playdale Playgrounds Ltd

**Risk Level:** L - Low Risk  
**Surface:** Wet Pour



**Finding:** A number of fixing(s) have worked loose

**Action:** Secure all loose fixings

**i** 6 - Low Risk (Finding 1)

**Item:** Activity Equipment - Multi Play (Toddler)  
**Manufacturer:** Playdale Playgrounds Ltd

**Risk Level:** L - Low Risk  
**Surface:** Wet Pour



**Finding:** There are gaps opening between the surfacing and the edging surround or between the joints in the surfacing

**Action:** Monitor for any further deterioration and repair as required



**i** 8 - Low Risk (Finding 2)

**Item:** Activity Equipment - Multi Play (Toddler)  
**Manufacturer:** Playdale Playgrounds Ltd

**Risk Level:** L - Low Risk  
**Surface:** Wet Pour



**Finding:** There is algae or moss on the surface of the equipment

**Action:** Clean and treat appropriately

**i** 6 - Low Risk (Finding 1)

**Item:** Activity Equipment - Adventure Trail  
**Manufacturer:** Playdale Playgrounds Ltd

**Risk Level:** L - Low Risk  
**Surface:** Grass



**Finding:** A damaged branch is hanging in in the fall space

**Action:** Remove damaged branch



**i** 8 - Low Risk (Finding 2)

**Item:** Activity Equipment - Adventure Trail  
**Manufacturer:** Playdale Playgrounds Ltd

**Risk Level:** L - Low Risk  
**Surface:** Grass



**Finding:** There is algae or moss on the surface of the equipment

**Action:** Clean and treat appropriately



**i** 8 - Low Risk (Finding 3)

**Item:** Activity Equipment - Adventure Trail  
**Manufacturer:** Playdale Playgrounds Ltd

**Risk Level:** L - Low Risk  
**Surface:** Grass



**Finding:** There are areas or parts of the timber on the structure that have rotted

**Action:** Replace all affected timbers



**i** 8 - Low Risk (Finding 4)

**Item:** Activity Equipment - Adventure Trail  
**Manufacturer:** Playdale Playgrounds Ltd

**Risk Level:** L - Low Risk  
**Surface:** Grass



**Finding:** There are areas or parts of the timber on the structure that have rotted

**Action:** Replace all affected timbers

**i** 5 - Very Low Risk (Finding 5)

**Item:** Activity Equipment - Adventure Trail  
**Manufacturer:** Playdale Playgrounds Ltd

**Risk Level:** V - Very Low Risk  
**Surface:** Grass



**Finding:** The adjacent tree trunk forms a hard object within the falling space of the equipment in contravention of the requirements of BS EN 1176 Part 1

**Action:** Monitor - No remedial work recommended



**i** 6 - Low Risk (Finding 6)

**Item:** Activity Equipment - Adventure Trail  
**Manufacturer:** Playdale Playgrounds Ltd

**Risk Level:** L - Low Risk  
**Surface:** Grass



**Finding:** Foliage has encroached on the fall space of the equipment

**Action:** Cut back foliage

**i** 8 - Low Risk (Finding 7)

**Item:** Activity Equipment - Adventure Trail  
**Manufacturer:** Playdale Playgrounds Ltd

**Risk Level:** L - Low Risk  
**Surface:** Grass



**Finding:** There are areas or parts of the timber on the structure that have rotted

**Action:** Replace all affected timbers



 12 - Moderate Risk (Finding 8)

**Item:** Activity Equipment - Adventure Trail  
**Manufacturer:** Playdale Playgrounds Ltd

**Risk Level:** M - Moderate Risk  
**Surface:** Grass



**Finding:** The timber on this item has severe rot

**Action:** Remove and replace all affected timber sections

 4 - Very Low Risk (Finding 9)

**Item:** Activity Equipment - Adventure Trail  
**Manufacturer:** Playdale Playgrounds Ltd

**Risk Level:** V - Very Low Risk  
**Surface:** Grass



**Finding:** There is/are bolt cap covers missing or damaged on the item

**Action:** Replace missing or damaged bolt cap covers



**i** 8 - Low Risk (Finding 10)

**Item:** Activity Equipment - Adventure Trail  
**Manufacturer:** Playdale Playgrounds Ltd

**Risk Level:** L - Low Risk  
**Surface:** Grass



**Finding:** There are areas or parts of the timber on the structure that have rotted

**Action:** Replace all affected timbers

**!** 12 - Moderate Risk (Finding 11)

**Item:** Activity Equipment - Adventure Trail  
**Manufacturer:** Playdale Playgrounds Ltd

**Risk Level:** M - Moderate Risk  
**Surface:** Grass



**Finding:** The timber on this item has severe rot

**Action:** Remove and replace all affected timber sections



**i** 8 - Low Risk (Finding 12)

**Item:** Activity Equipment - Adventure Trail  
**Manufacturer:** Playdale Playgrounds Ltd

**Risk Level:** L - Low Risk  
**Surface:** Grass



**Finding:** There are areas or parts of the timber on the structure that have rotted

**Action:** Replace all affected timbers

**i** 8 - Low Risk (Finding 13)

**Item:** Activity Equipment - Adventure Trail  
**Manufacturer:** Playdale Playgrounds Ltd

**Risk Level:** L - Low Risk  
**Surface:** Grass



**Finding:** There are areas or parts of the timber on the structure that have rotted

**Action:** Replace all affected timbers



**i** 8 - Low Risk (Finding 14)

**Item:** Activity Equipment - Adventure Trail  
**Manufacturer:** Playdale Playgrounds Ltd

**Risk Level:** L - Low Risk  
**Surface:** Grass



**Finding:** There are areas or parts of the timber on the structure that have rotted

**Action:** Replace all affected timbers

**!** 12 - Moderate Risk (Finding 15)

**Item:** Activity Equipment - Adventure Trail  
**Manufacturer:** Playdale Playgrounds Ltd

**Risk Level:** M - Moderate Risk  
**Surface:** Grass



**Finding:** The timber on this item has severe rot

**Action:** Remove and replace all affected timber sections



**i** 6 - Low Risk (Finding 16)

**Item:** Activity Equipment - Adventure Trail  
**Manufacturer:** Playdale Playgrounds Ltd

**Risk Level:** L - Low Risk  
**Surface:** Grass



**Finding:** The surface has eroded and the foundations are exposed

**Action:** Reinstall surrounding surfaces to cover the foundations



**i** 6 - Low Risk (Finding 17)

**Item:** Activity Equipment - Adventure Trail  
**Manufacturer:** Playdale Playgrounds Ltd

**Risk Level:** L - Low Risk  
**Surface:** Grass



**Finding:** There is some evidence of rot in all the timber element supports

**Action:** Monitor for any further deterioration and replace as required



**i** 6 - Low Risk (Finding 1)

**Item:** Multi Use Games Area - Basketball Post  
**Manufacturer:** Unknown

**Risk Level:** L - Low Risk  
**Surface:** Bitmac



**Finding:** The backboard is damaged

**Action:** Monitor for any further deterioration and repair as required

**i** 6 - Low Risk (Finding 2)

**Item:** Multi Use Games Area - Basketball Post  
**Manufacturer:** Unknown

**Risk Level:** L - Low Risk  
**Surface:** Bitmac



**Finding:** Tree foliage is hanging into the basket ball area

**Action:** Cut back foliage



**i** 6 - Low Risk (Finding 1)

**Item:** Ancillary Items - Fence - Steel Mesh  
**Manufacturer:** Owner/Operator

**Risk Level:** L - Low Risk  
**Surface:** Grass



**Finding:** The fence mesh is loose on the posts in areas

**Action:** Re secure fence to posts

**i** 6 - Low Risk (Finding 2)

**Item:** Ancillary Items - Fence - Steel Mesh  
**Manufacturer:** Owner/Operator

**Risk Level:** L - Low Risk  
**Surface:** Grass



**Finding:** There is no padlock on the maintenance gate

**Action:** Provide a padlock to secure the gate



**i** 6 - Low Risk (Finding 3)

**Item:** Ancillary Items - Fence - Steel Mesh  
**Manufacturer:** Owner/Operator

**Risk Level:** L - Low Risk  
**Surface:** Grass



**Finding:** The gate is loose on its hinges

**Action:** Investigate and take appropriate action to rectify